

2012

Floor Plans

Nomad®

84" Wide Retro Travel Trailers

96" Wide Joey Select Travel Trailers

90" & 96" Wide Joey Select Fifth Wheels

96" Wide Park Trailers

102" Wide Destination Travel Trailers



Your local ***Nomad*** dealer is:

SKYLINE®
BRINGING AMERICA HOME. BRINGING AMERICA FUN.

Effective 2011

Interior

Cabinets

- Hardwood Frame Cabinet Doors
- Full Extension Ball Bearing Drawer Guides
- High Pressure Laminate Counter Tops
- Maple Cabinets

Decor

- Color-Coordinated Designer Interiors
- Embossed Vinyl Flooring
- Carpet & Pad as Shown on Floor Plans
- Extra Padded Dinette Seat Cushions w/Bolsters in Accent Fabric
- Mini Blinds at All Windows Except Bunks
- Decorative Glass Insert Cabinet Doors in Select Areas

Kitchen & Living Area

- Dometic® Double Door Refrigerator
- Wedgewood® 3 Burner Range w/Oven & Piezo
- Radius Counter Tops
- Power Range Hood w/Light
- Large Carousel Dometic® Microwave Oven w/Clock
- Acrylic Kitchen Sink w/High Rise Faucet
- Decorative Wall Border in Kitchen & Living Area
- Systems Monitor Panel
- 25,000 Btu Ducted Furnace
- 13.5 MBtu Roof Ducted Air Conditioner w/Wall Thermostat
- 120 V to 12 V Power Converter
- TV Antenna w/Booster
- Park Cable Hookup for TV
- 12V AM/FM/DVD/MP3 Stereo w/iPod Connection, Interior & Exterior Speakers
- Six Gallon Gas/DSI Water Heater

Bedroom & Bath

- Color-Coordinated Quilted Bedspread
- Deluxe Headboard
- Lift-Up Bed Storage w/Gas Piston Struts
- Evergreen® Mattress
- ABS Tub w/ABS Wall Surround
- China Foot Flush Toilet
- Deluxe Medicine Cabinet w/Mirror
- Towel Ring & Toilet Paper Holder
- Skylight Over Tub
- Power Bath Vent

Exterior

Roof Construction

- Tapered Roof Construction to Promote Water Runoff
- Seamless One-Piece Roof w/Manufacturer's 12-Year Warranty
- Awning Drip Rail w/Extra Long Down Spouts

Wall Construction

- Wall Studs on 16" Centers (Maximum)
- Steel Strap Reinforcement on Walls for Superior Durability
- R-7 Settle-Resistant Insulation
- Twist Locks on All Storage Doors
- Clamp Ring Dark Tint Safety Glass Radius Corner Windows
- Patio Convenience Light
- Radius Entry Door w/Screen
- Assist Handle at Entry Door

Chassis Construction

- Cambered I-Beam Steel Chassis w/Steel Outriggers
- Battery Rack
- Electric Brakes at All Wheels
- Black Rotocast Wheel Wells (Most Models)

- Safety Chains & Breakaway Safety Switch
- E-Z Lube Hubs on Axles
- Four Stabilizer Jacks

Floor Construction

- 5/8" Tongue & Groove Floor Decking
- Tightly Sealed Woven Polyethylene Underbelly

Features

- Two 30 lb. LP Propane Tanks w/Auto Changeover
- Holding Tanks w/Drain Outlet
- Rear Bumper w/Sewer Hose Carrier
- Water Heater Bypass

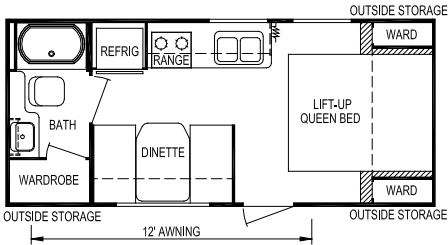
Security & Safety

- Smoke Detector
- Propane Leak Detectors
- Carbon Monoxide Alarm
- Flush Door Latch w/Integral Dead Bolt Lock
- Fire Extinguisher

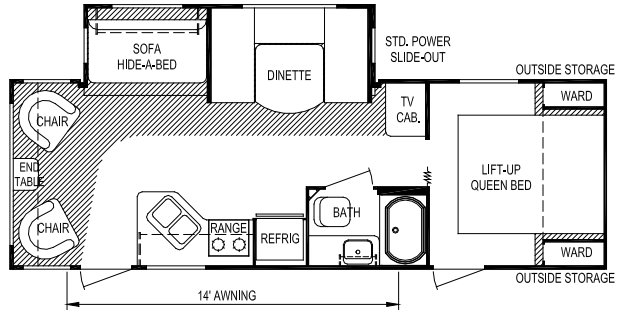
Popular Options

- Power Side Awning
- Aluminum Wheels
- Camp Kitchen (Select Models)
- Fireplace (Select Models)
- Night Shades
- Outside Shower
- 26" Vizio® LCD TV
- Gas/Electric/DSI Water Heater
- **Laminated Sidewalls, Including:**
 - Welded Aluminum Frame Sidewalls w/Block Foam Insulation, Steel Cabinet Backers, Luan Exterior Panel Under Fiberglass Exterior, and Luan Interior Panel All bonded Together.
 - Fiberglass Exterior On Front & Rear Walls

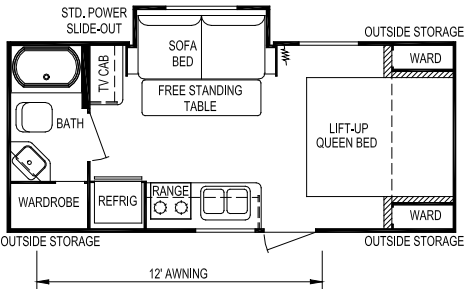




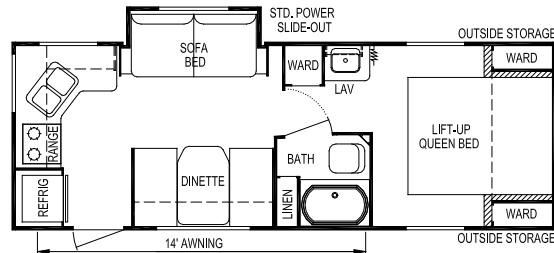
Model 196



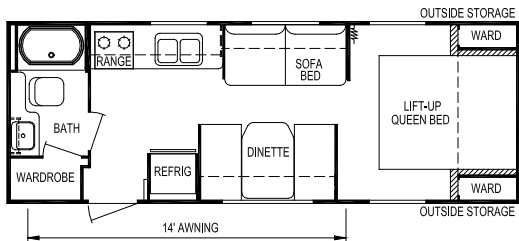
Model 258



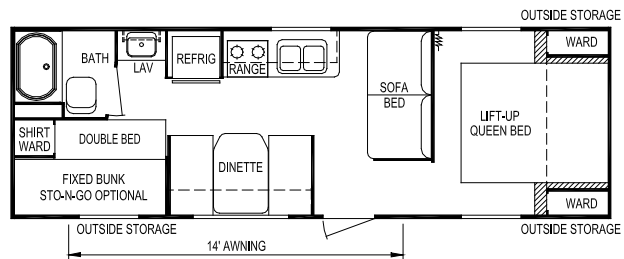
Model 204



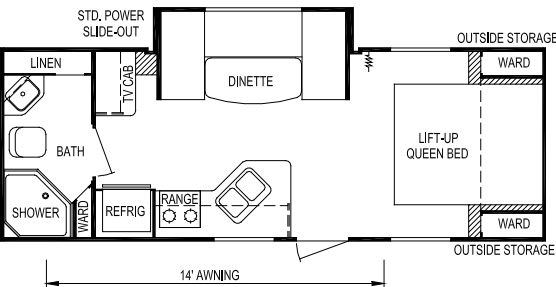
Model 260



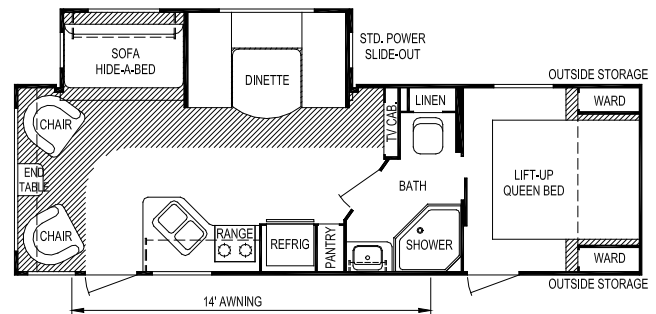
Model 207



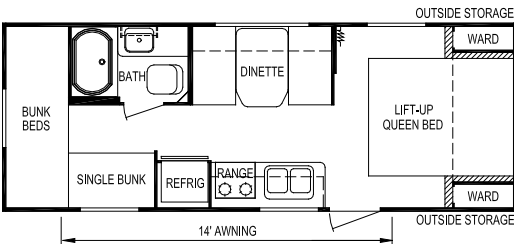
Model 268



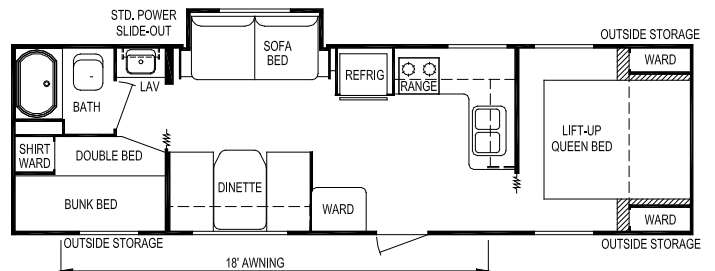
Model 236



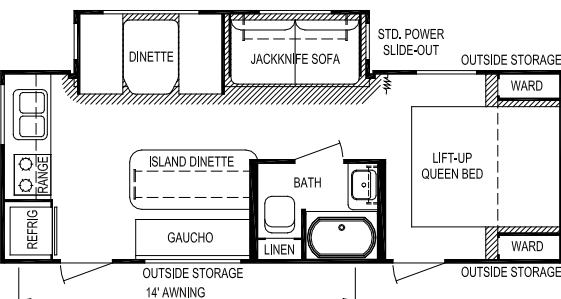
Model 272

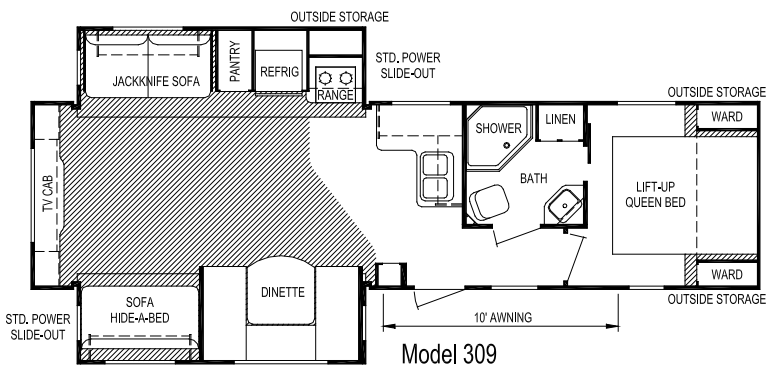
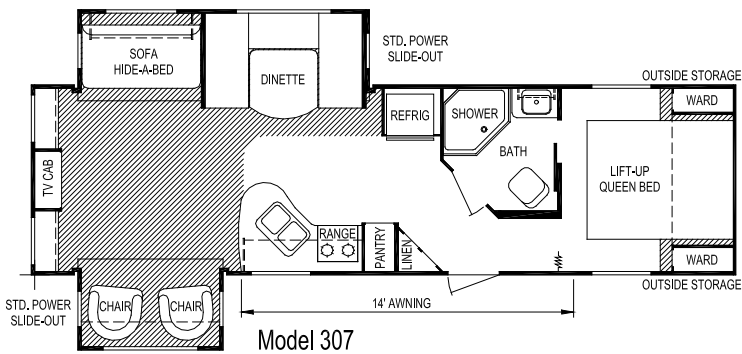
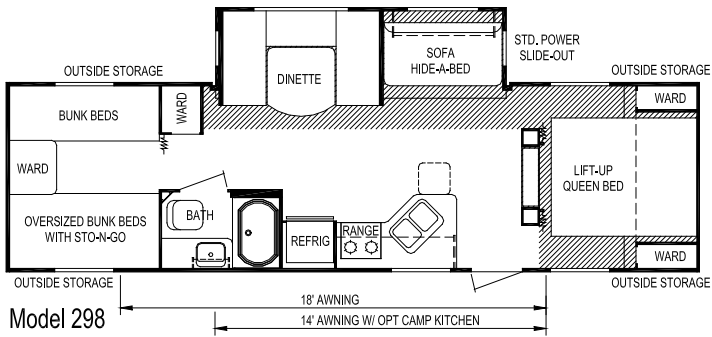
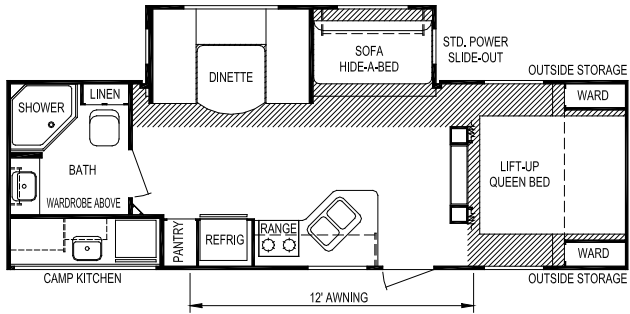
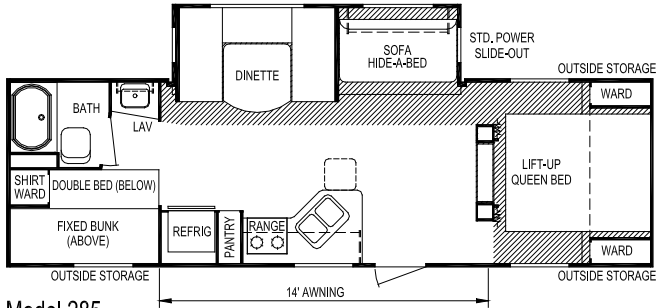


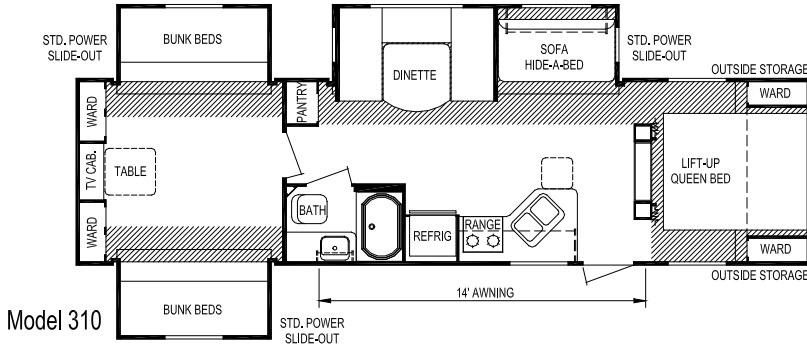
Model 249



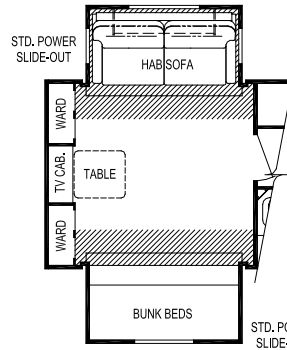
Model 279



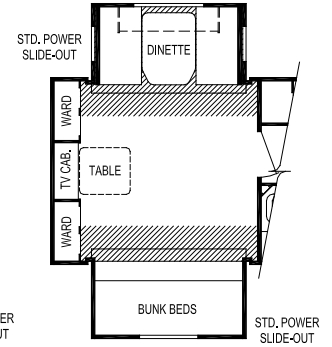




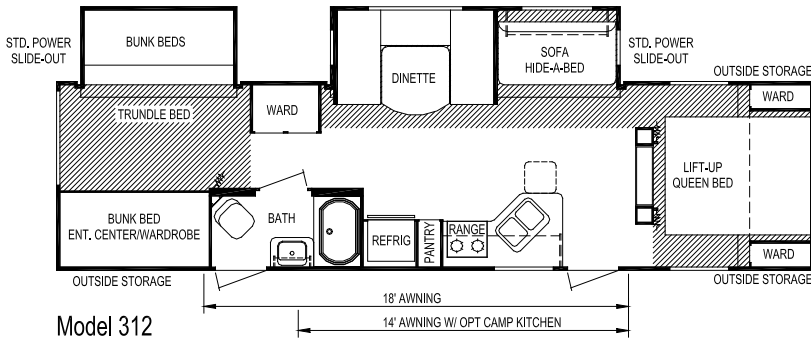
Model 310



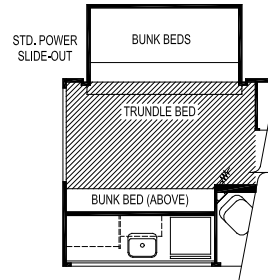
Opt. Rear Sofa
(Model 310)



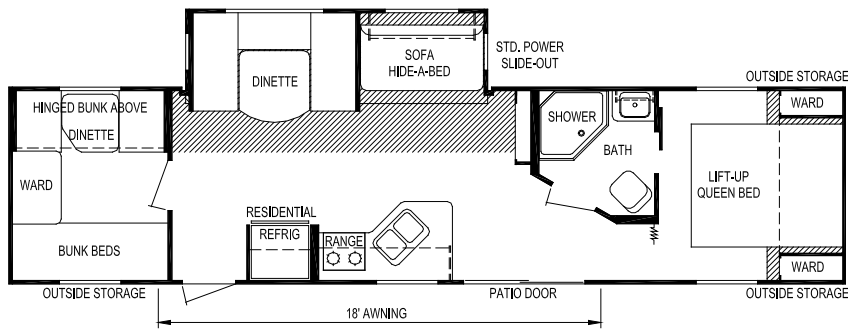
Opt. Rear Dinette
(Model 310)



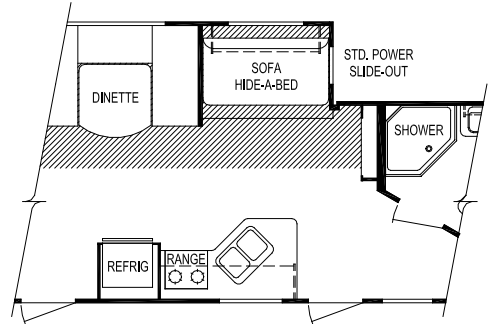
Model 312



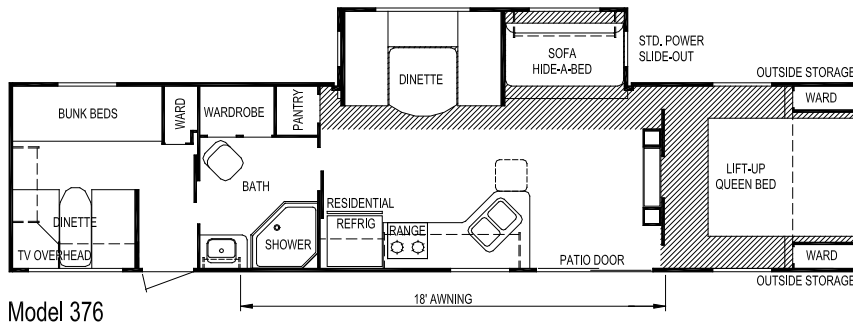
Option Camp Kitchen
Model 312



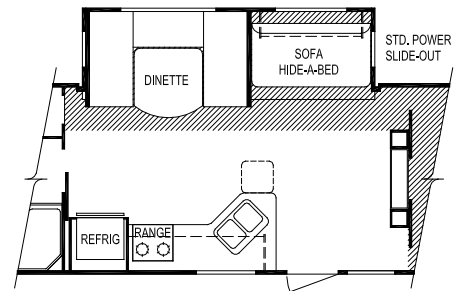
Model 340



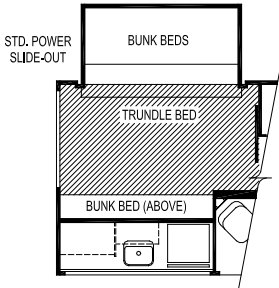
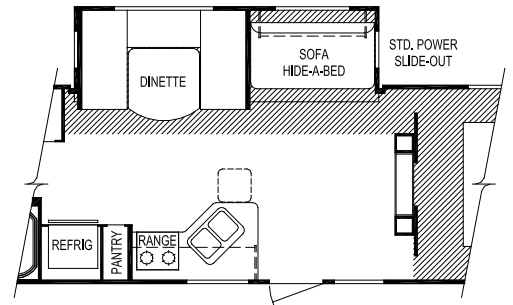
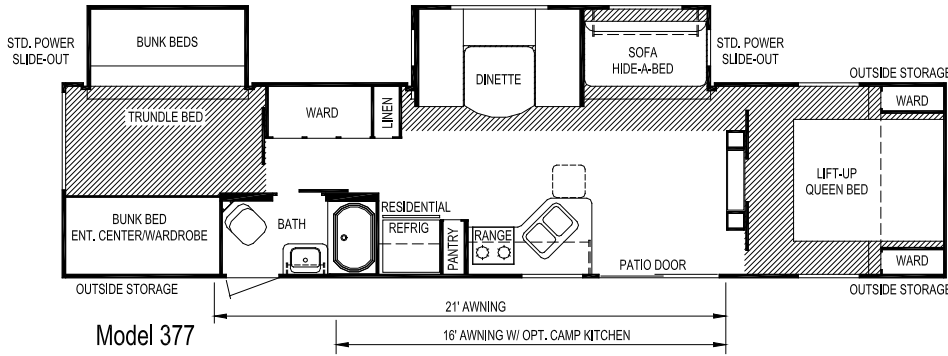
OPT. FRONT ENTRY
(Model 340)



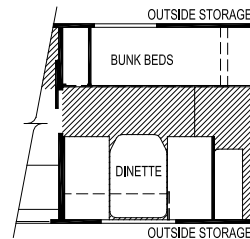
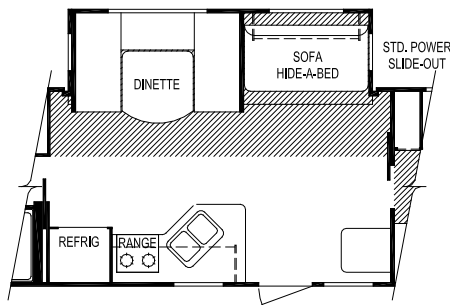
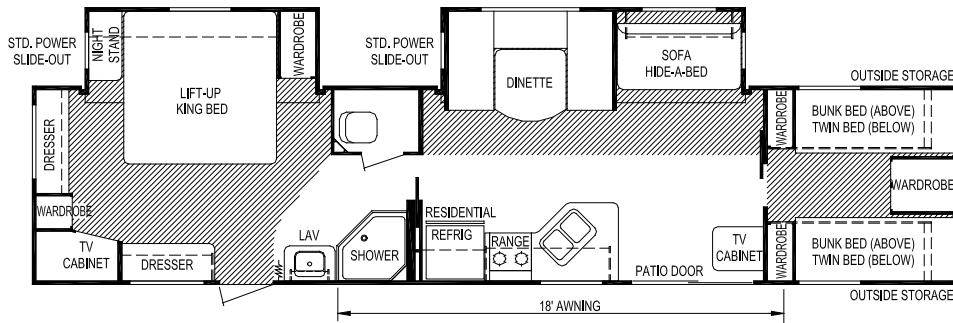
Model 376



OPT. FRONT ENTRY
(Model 376)



Option Camp Kitchen Model 377



Model	196	204	207	236	249	253	258	260	268	272
Weights Unloaded Vehicle Weight (see Note 2)	3,775	4,050	4,375	4,650	3,950	6,225	5,875	4,725	4,625	6,300
Dry Hitch Weight	425	400	500	525	475	650	625	600	500	700
Dry Axle Weight	3,350	3,650	3,875	4,125	3,475	5,575	5,250	4,125	4,125	5,600
GVWR (Total Capacity of Trailer)	5,600	5,600	6,200	6,200	6,200	7,750	7,750	6,200	6,200	7,750
Carrying Capacity (see Note 2)	1,650	1,350	1,625	1,375	2,050	1,275	1,625	1,275	1,375	1,200
Accommodations Sleeping (standard / optional)	4	4	6	4	6	6	6	6	8	6
Bed Size (standard)	60" x 74"	60" x 74"	60" x 74"	60" x 74"	60" x 74"	60" x 74"	60" x 74"	60" x 74"	60" x 74"	60" x 74"
Second Bed Size	N/A	N/A	N/A	N/A	(2) 32" x 90"	N/A	N/A	N/A	48" x 74" 28" x 76"	N/A
Dinette Size	40" x 71"	N/A	40" x 71"	44" x 92"	(1) 28" x 76"	40" x 71"	40" x 71"	48" x 79"	40" x 71"	40" x 71"
Sofa	N/A	42" x 64"	42" x 64"	N/A	N/A	42" x 64"	44" x 74"	42" x 64"	42" x 64"	44" x 74"
Measurements Exterior Length (see Note 3)	22'-10"	23'-4"	27'-0"	27'-1"	26'-4"	27'-10"	29'-8"	27'-8"	29'-7"	30'-10"
Exterior Width (see Note 3)	96"	96"	96"	96"	96"	96"	96"	96"	96"	96"
Exterior Height (see Note 3)	10'-1"	10'-1"	10'-1"	10'-2"	10'-1"	11'-0"	11'-0"	10'-1"	10'-1"	11'-0"
Interior Height	78"	78"	78"	78"	78"	78"	78"	78"	78"	78"
Capacities Fresh Water System (gallons)	36	36	36	36	36	36	36	36	36	36
Gray Water Tank (gallons)	31	31	31	31	31	56	40	62	31	40
Black Water Tank (gallons)	31	31	31	31	32	31	40	31	31	40
Air Conditioner Size	13,500	13,500	13,500	13,500	13,500	13,500	13,500	13,500	13,500	13,500
Awning Size	12'	12'	14'	14'	14'	14'	14'	14'	14'	14'
Convertor Size (amps)	55	55	55	55	55	55	55	55	55	55
Furnace Rating (Btu)	25,000	25,000	25,000	25,000	25,000	25,000	25,000	25,000	25,000	25,000
Propane Gas Capacity (pounds)	60	60	60	60	60	60	60	60	60	60
Tires	ST205/ 75R14-C	ST205/ 75R14-C	ST205/ 75R14-C	ST205/ 75R14-C	ST205/ 75R14-C	ST205/ 75R15-C	ST205/ 75R15-C	ST205/ 75R15-C	ST205/ 75R14-C	ST205/ 75R15-C
Water Heater (gallons)	6	6	6	6	6	6	6	6	6	6

Notes
 (1) All weights, dimensions, and capacities shown are approximate values.
 (2) Unloaded vehicle weight and carrying capacity will vary depending upon optional equipment. Full propane tanks are factored into carrying capacity. Skyline weighs every unit at the factory. See trailer weight information label located inside the front entry door for specific unloaded vehicle weight and cargo carrying capacity.
 (3) Dimensions stated to industry standards. Exterior length includes approximately a four foot hitch on travel trailers. Exterior height includes air conditioner, if installed. Exterior width does not include the width of the awning, if installed.

Model	279	285	287	298	307	309	310	312	340	376	377	383
Weights Unloaded Vehicle Weight (see Note 2)	5,625	6,050	6,500	6,575	7,250	7,900	8,175	7,250	7,250	7,600	8,425	8,450
Dry Hitch Weight	750	700	725	875	725	850	850	800	725	1,150	1,000	1,000
Dry Axle Weight	4,875	5,350	5,775	5,700	6,525	7,050	7,325	6,450	6,525	6,450	7,425	7,450
GVWR (Total Capacity of Trailer)	7,750	7,750	7,750	11,200	11,200	11,200	11,200	11,200	11,200	11,200	11,200	11,200
Carrying Capacity (see Note 2)	1,900	1,450	1,000	4,350	3,675	3,000	2,725	3,675	3,675	3,300	2,450	2,425
Accommodations Sleeping (standard / optional)	8	9	6	9 / 10	6	7	9 / 10	9 / 10	10	10	8	8
Bed Size (standard)	60" x 74"	60" x 74"	60" x 74"	60" x 74"	60" x 74"	60" x 74"	60" x 74"	60" x 74"	60" x 74"	60" x 74"	60" x 74"	74" x 74"
Second Bed Size	48" x 74" 28" x 76"	48" x 74" 28" x 76"	N/A	(2) 28" x 76" (2) 38" x 74"	N/A	N/A	(2) 28" x 76" (2) 38" x 74"	(2) 28" x 76" (2) 38" x 74"	(3) 28" x 76"	(2) 28" x 76"	(2) 28" x 76" (2) 38" x 74"	(2) 28" x 76" (2) 32" x 76"
Dinette Size	40" x 71"	48" x 79"	48" x 79"	48" x 79"	48" x 79"	48" x 79"	48" x 79"	48" x 79"	48" x 79" 30" x 72"	48" x 79" 40" x 71"	48" x 79"	48" x 79"
Sofa	42" x 64"	44" x 74"	44" x 74"	44" x 74"	44" x 74"	(1) 42" x 64" (1) 42" x 74"	44" x 74"	44" x 74"	44" x 74"	44" x 74"	44" x 74"	44" x 74"
Measurements Exterior Length (see Note 3)	33'-2"	32'-0"	30'-9"	33'-10"	34'-2"	35'-6"	35'-11"	36'-7"	38'-6"	40'-4"	40'-9"	40'-9"
Exterior Width (see Note 3)	96"	96"	96"	96"	96"	96"	96"	96"	96"	96"	96"	96"
Exterior Height (see Note 3)	10'-3"	11'-0"	11'-0"	11'-0"	11'-0"	11'-4"	11'-4"	11'-2"	11'-2"	11'-2"	11'-4"	11'-4"
Interior Height	78"	78"	78"	78"	78"	78"	78"	78"	78"	78"	78"	78"
Capacities Fresh Water System (gallons)	36	36	36	36	36	36	36	36	36	36	36	36
Gray Water Tank (gallons)	50	40	62	40	40	40	40	40	50	40	40	40
Black Water Tank (gallons)	40	40	40	40	40	40	40	40	40	40	40	40
Air Conditioner Size	13,500	13,500	13,500	13,500	13,500	13,500	13,500	13,500	13,500	13,500	13,500	13,500
Awning Size	18'	14'	12'	18'	14'	10'	14'	18'	18'	18'	21'	18'
Convertor Size (amps)	55	55	55	55	55	55	55	55	55	55	55	55
Furnace Rating (Btu)	25,000	25,000	25,000	25,000	25,000	25,000	25,000	25,000	25,000	25,000	25,000	25,000
Propane Gas Capacity (pounds)	60	60	60	60	60	60	60	60	60	60	60	60
Tires	ST205/ 75R15-C	ST205/ 75R15-C	ST205/ 75R15-C	ST225/ 75R15-D	ST225/ 75R15-D	ST225/ 75R15-D	ST225/ 75R15-D	ST225/ 75R15-D	ST225/ 75R15-D	ST225/ 75R15-D	ST225/ 75R15-D	ST225/ 75R15-D
Water Heater (gallons)	6	6	6	6	6	6	6	6	6	6	6	6

Notes
 (1) All weights, dimensions, and capacities shown are approximate values.
 (2) Unloaded vehicle weight and carrying capacity will vary depending upon optional equipment. Full propane tanks are factored into carrying capacity. Skyline weighs every unit at the factory. See trailer weight information label located inside the front entry door for specific unloaded vehicle weight and cargo carrying capacity.
 (3) Dimensions stated to industry standards. Exterior length includes approximately a four foot hitch on travel trailers. Exterior height includes air conditioner, if installed. Exterior width does not include the width of the awning, if installed.



Skyline Customer Satisfaction

Skyline Customer Satisfaction is more than just a promise. We believe you deserve quality in every aspect of ownership. To ensure your continued satisfaction, we're dedicated to providing you with a quality product along with the very best service available in our industry. Skyline's "Commitment of Excellence" will be a source of pride and satisfaction for you.

Contact your Skyline dealer for details.



NO-NONSENSE WARRANTY

Manufacturing defects reported to Skyline within one year after original retail delivery of your new Travel Trailer or Fifth Wheel by an authorized dealer will be corrected without charge and within reasonable times. Excluded are misuse (including lack of reasonable maintenance), minor imperfections, alterations, and dealer or owner improper transportation, installation, or hookup.

This warranty gives you specific legal rights. You may have other rights which vary from state to state.

Skyline's suppliers often provide additional warranties on their components beyond the Skyline factory bumper-to-bumper warranty. For example — the range, water heater, furnace, convertor, air conditioner, refrigerator, microwave and awning carry two-year supplier warranties. The one-piece roof carries a 12-year warranty. Ask your dealer for full details.

Manufacturer's Notice: All specifications, equipment, and prices are subject to change without prior notice. Production of all models subject to seasonal scheduling. Skyline Corporation reserves the right to improve a model without incorporating these changes in similar models produced at an earlier date.

Consult your automobile dealer and your recreational vehicle dealer to assure the proper match between tow vehicle and trailer. Tow vehicle and recreational unit must be properly equalized for efficient product performance and safety. Before you purchase your recreational vehicle, carefully consider the number of people it will accommodate and its end use. Manufacturer's load capacity restrictions and recommendations must be followed for safe and efficient product performance.

Your Retailer, an independent contractor, who is not an agent of Skyline Corporation, is the party responsible for your purchase contract and any additions, deletions, alterations, or attachments made to or in your recreational vehicle.



For the name of your nearest Skyline-built RV dealer, call:
Hemet, CA 1-888-442-0997
Mansfield, TX 1-800-962-7773
Elkhart, IN 1-800-736-2573

Go RVing.

Or visit us at our Web Site at www.skylinecorp.com