

2012

Floor Plans

Nomad[®]

84" Wide Retro Travel Trailers

96" Wide Joey Select Travel Trailers

90" & 96" Wide Joey Select Fifth Wheels

96" Wide Park Trailers

102" Wide Destination Travel Trailers



Your local *Nomad* dealer is:

SKYLINE[®]
BRINGING AMERICA HOME. BRINGING AMERICA FUN.

Effective 2011

96" Wide

Interior

Cabinets

- Maple Cabinets
- Drawers w/Full Extension Ball Bearing Guides
- Hardwood Frame Cabinet Doors
- High Pressure Laminate Counter Tops

Decor

- Color-Coordinated Designer Interior
- Embossed Vinyl Flooring
- Extra Padded Dinette & Sofa Seat Cushions
- Decorative Glass Doors in Select Overhead Cabinets
- Hide-A-Bed Sofa
- Upgrade Window Treatment
- Pleated Night Shades
- Living Room Wall Border
- Decorative 12 Volt Light Above Dinette in Slideout
- Decorative 12 Volt Wall Light(s) at Sofa in Slideout

Kitchen & Living Area

- 18 cu. ft. Whirlpool® Residential Frost-Free Refrigerator
- Power Range Hood w/Light
- 120 V to 12 V Power Converter
- TV Antenna
- Living Room TV Jack
- Park Cable for TV Hookup
- Acrylic Kitchen Sink
- Patio Door
- AM/FM/DVD Stereo w/USB & iPod Inputs, 4 Interior Speakers & 2 Exterior Speakers
- 31,000 Btu Furnace
- Monitor Panel
- 10 Gallon Gas/Electric/DSI Water Heater
- Water Heater Bypass
- Microwave
- 15,000 Btu Ducted Air Conditioner w/Down-Draft Grill
- Overhead Cabinet in Living Room Slideout
- 21" Wedgewood® 3-Burner Range w/Oven & Piezo Ignition

Bedroom

- Color-Coordinated Quilted Bedspread
- Lift-up Bed Storage w/Piston Struts
- Evergreen® Mattress
- Bedroom Carpet
- Deluxe Headboard
- Bedroom Overhead Cabinet

Bath

- ABS Tub
- Towel Ring
- Shower Surround
- Glass Shower Enclosure
- Deluxe Medicine Cabinet
- Power Bath Vent
- Skylight in Bath
- Porcelain Foot Flush Toilet

Exterior

Roof Construction

- Tapered Roof Construction to Promote Water Runoff
- Seamless One-Piece Roof w/12 Year Manufacturer's Limited Warranty
- Pre-Wired & Framed for Roof Air Conditioner
- Awning Drip Rail w/Extra Long Drip Spouts

Wall Construction

- Double Wrapped & Sealed Corners
- Wall Studs on 16" Centers (Maximum)
- Steel-Strap Reinforcement on Walls for Superior Durability
- R-7 Settle-Resistant Insulation
- Twist Locks on All Storage Doors
- Radius Tinted Safety Glass Clamp-Ring Windows
- Patio Convenience Light
- Entry Screen Door
- Entry Door Assist Handle
- 84" Ceiling Height
- Slider Windows in Slideout Room End Walls

Chassis Construction

- Cambered Steel Frame Chassis w/Steel Outriggers
- Battery Rack
- E-Z Lube Hubs on Axles

- Electric Brakes at All Wheels
- Safety Chains & Breakaway Safety Switch
- Stabilizer Jacks

Floor Construction

- 5/8" Tongue & Groove Floor Decking
- Tightly Sealed Woven Polyethylene Underbelly

Features

- Holding Tanks w/Drain Outlet
- Rear Bumper w/Sewer Hose Carrier
- Color-Coordinated A&E® Side Awning
- Outside Shower
- Upgrade Exterior Graphics
- Two 30 lb. Propane Tanks
- Propane Tank Cover
- Swing-Away Exterior Assist Handle

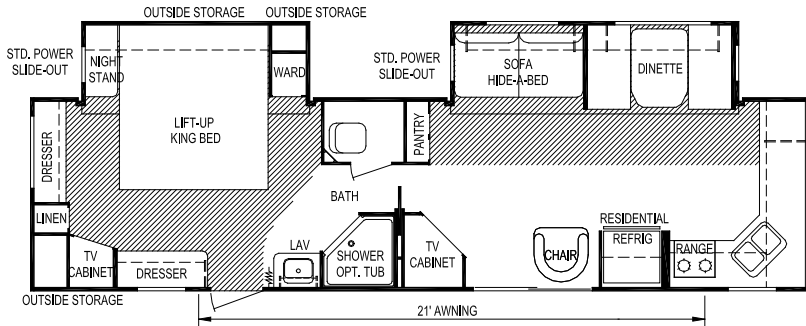
Security & Safety

- LP Gas Leak Detector
- Smoke Detector
- Carbon Monoxide Detector
- Fire Extinguisher
- Flush Door Latch w/Integral Dead Bolt Lock

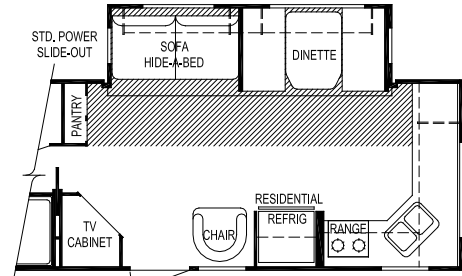
Popular Options

- 50 amp Service
- A&E® 12 Volt Power Awning Replacing Standard Awning
- Detachable Hitch
- Electric Fireplace
- Outside Grill
- 26" Vizio® LCD TV

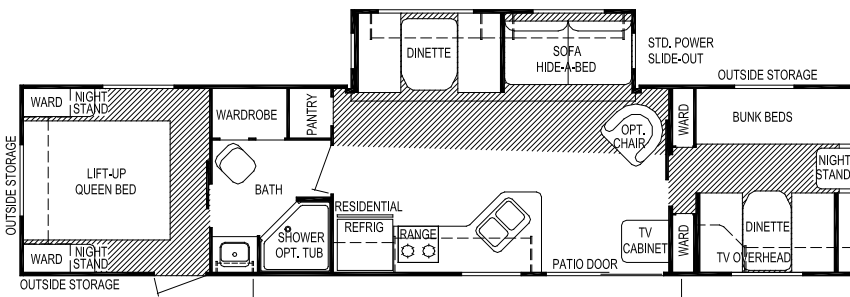




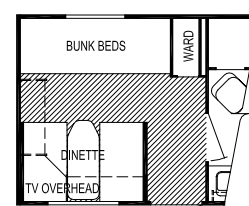
Model 326



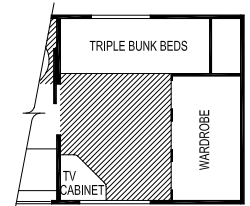
OPT. FRONT ENTRY
(Model 326)



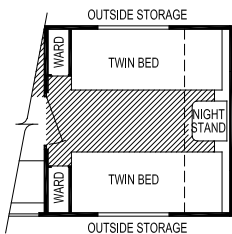
Model 371



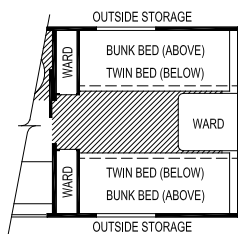
Option Rear Dinette
(Model 371)



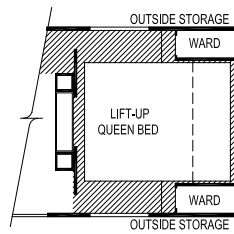
Option Front Triple Bunk
Beds (Model 371)



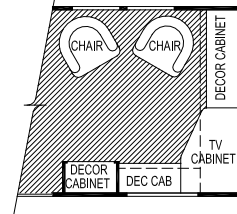
Option Twin Beds
(Model 371)



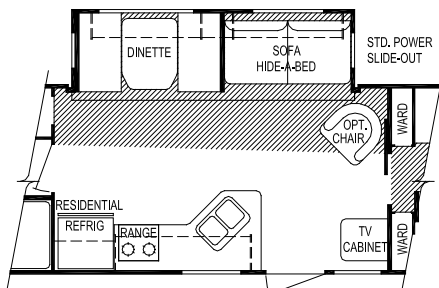
Option Front Twin Beds
W/ Bunks (Model 371)



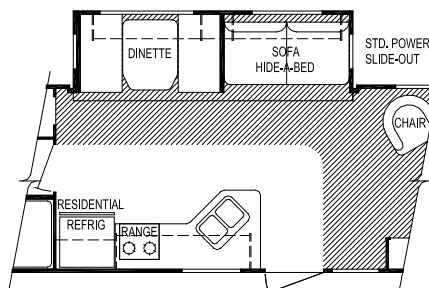
Option Front Queen Bed w/ TV
(Model 371)



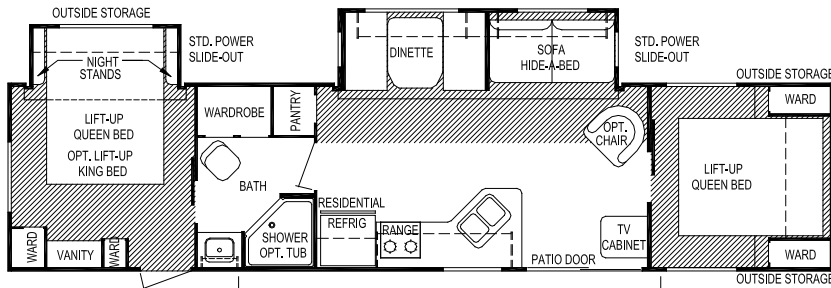
Option Front Den
(Model 371)



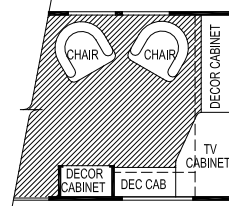
Option Living Room / Entry Door
W/ Front Bedrooms (Model 371)



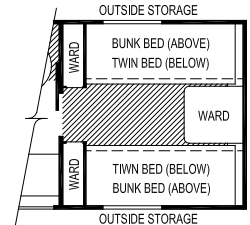
Option Living Room / Entry Door
W/ Front Den (Model 371)



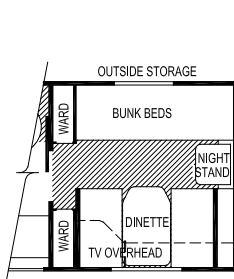
Model 372



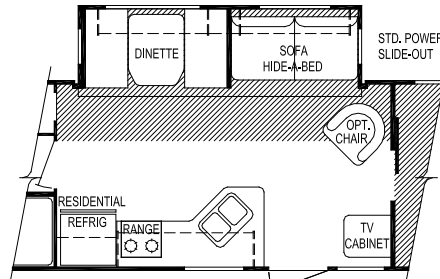
Option Front Den (Model 372)



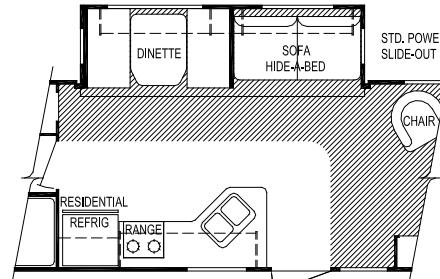
Option Front Twin Beds W/ Bunks (Model 372)



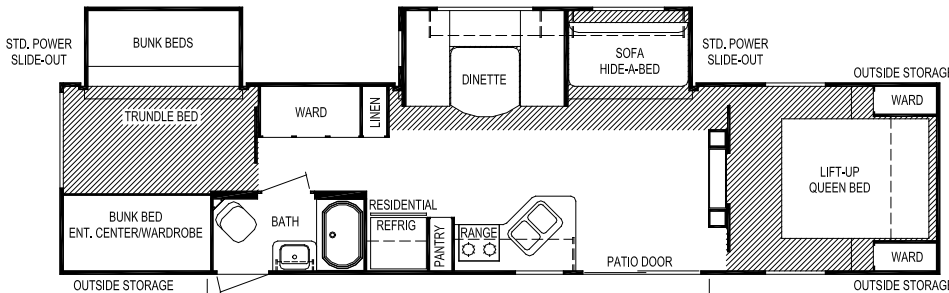
Option Front Dinette (Model 372)



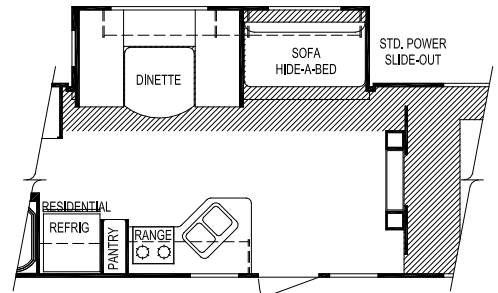
Option Living Room / Entry Door W/ Front Bedrooms (Model 372)



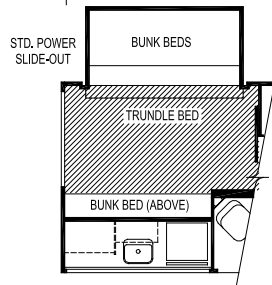
Option Living Room / Entry Door W/ Front Den (Model 372)



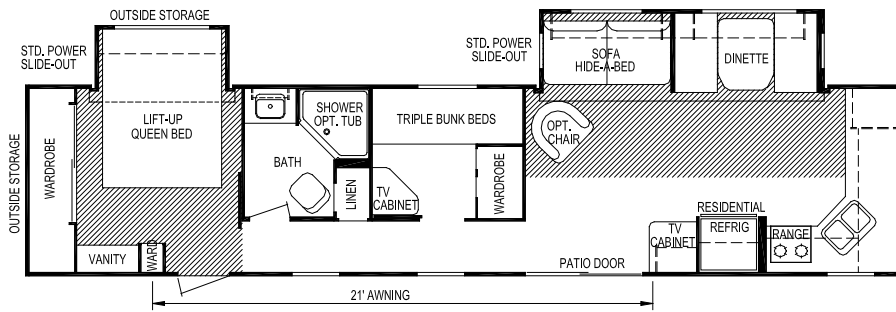
Model 378



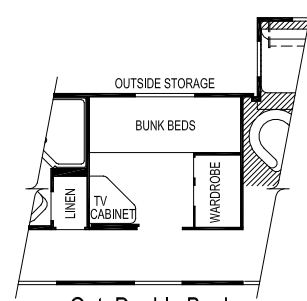
Option Front Entry Model 378



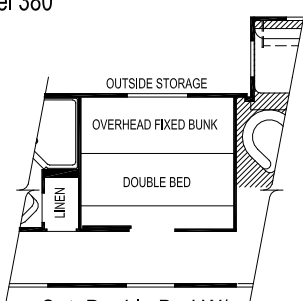
Option Camp Kitchen Model 378



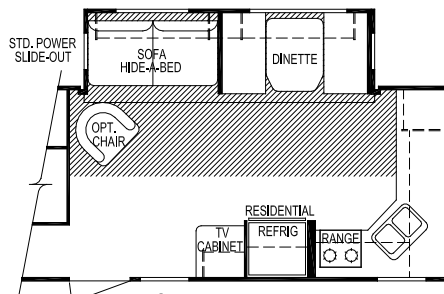
Model 380



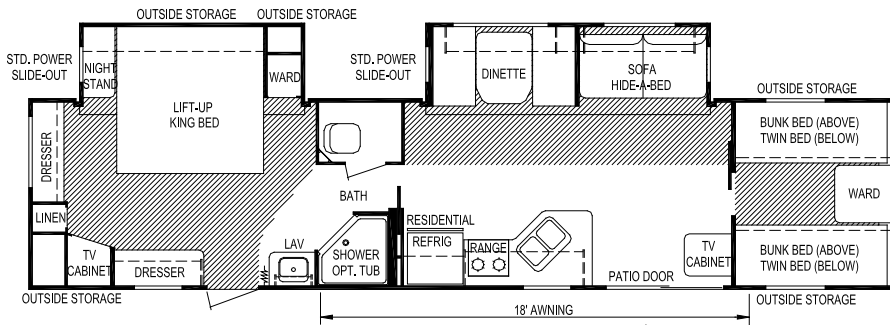
Opt. Double Bunks (Model 380)



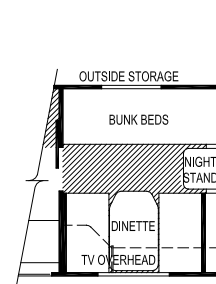
Opt. Double Bed W/ Fixed bunk (Model 380)



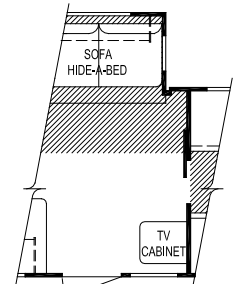
Opt. Front Entry (Model 380)



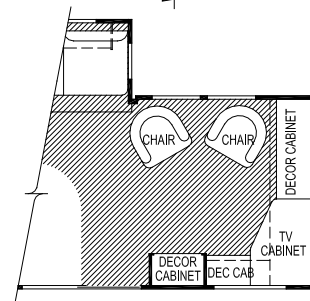
Model 386



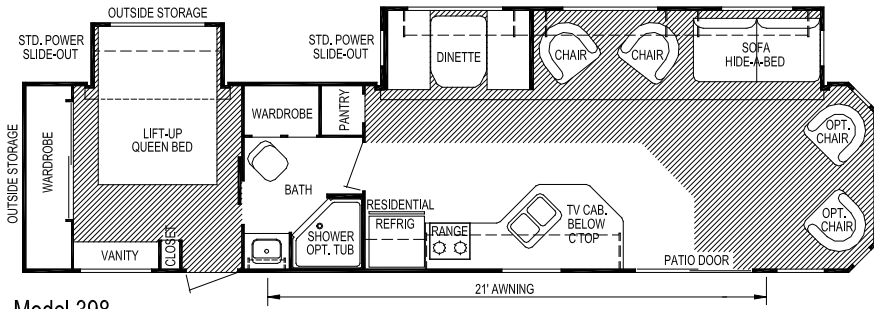
Option Front Dinette (Model 386)



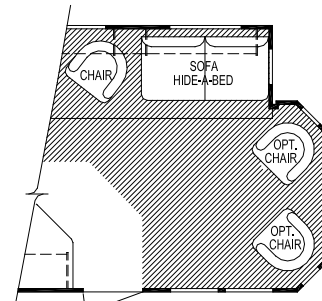
Option Front Entry (Model 386)



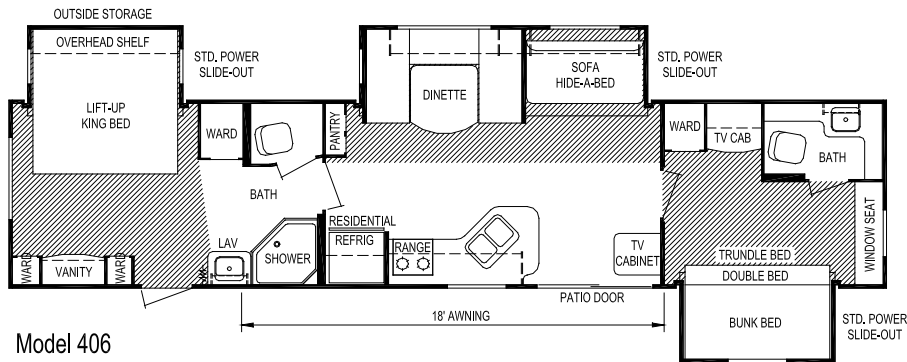
Option Front Den (Model 386)



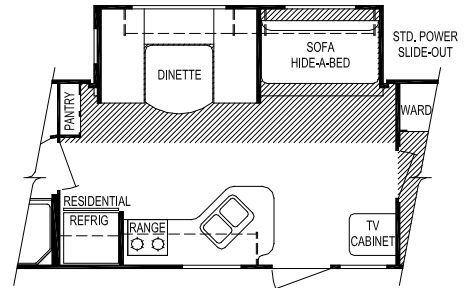
Model 398



Option Entry Door
(Model 398)



Model 406



OPT. FRONT ENTRY
(Model 406)

Model	326	371	372	378	380	386	398	406
Weights								
Unloaded Vehicle Weight (see Note 2)	7,800	7,100	7,350	8,175	8,150	8,325	8,300	9,200
Dry Hitch Weight	1,000	950	850	1,000	1,075	975	1,075	1,450
Dry Axle Weight	6,800	6,150	6,475	7,175	7,075	7,350	7,225	7,750
GVWR (Total Capacity of Trailer)	11,200	11,200	11,200	11,200	11,200	11,200	11,200	11,200
Carrying Capacity (see Note 2)	3,100	3,825	3,550	2,700	2,725	2,550	2,575	1,650
Accommodations								
Sleeping (standard / optional)	6	10 / 8	8 / 10	8	9 / 7	6	6	10
Bed Size (standard)	74" x 74"	60" x 74"	60" x 74"	60" x 74"	60" x 80"	74" x 74"	60" x 80"	74" x 74"
Second Bed Size	N/A	(2) 28" x 76"	60" x 80"	(2) 28" x 76" (2) 38" x 74"	(3) 28" x 76"	N/A	N/A	(1) 48" x 74" (2) 38" x 74"
Dinette Size	40" x 71"	40" x 71"	40" x 71"	48" x 79"	40" x 71"	40" x 71"	40" x 71"	48" x 79"
Sofa Size	48" x 74"	48" x 74"	48" x 74"	44" x 74"	48" x 74"	48" x 74"	48" x 74"	44" x 74"
Measurements								
Exterior Length (see Note 3)	36'-0"	38'-10"	38'-10"	40'-5"	40'-5"	40'-1"	40'-0"	41'-0"
Exterior Width (see Note 3)	96"	96"	96"	96"	96"	96"	96"	96"
Exterior Height (see Note 3)	11'-8"	11'-8"	11'-8"	11'-10"	11'-8"	11'-10"	11'-10"	11'-10"
Interior Height	84"	84"	84"	84"	84"	84"	84"	84"
Capacities								
Fresh Water System (gallons)	50	50	50	50	50	50	50	50
Gray Water Tank (gallons)	50	40	40	40	65	50	40	80
Black Water Tank (gallons)	40	40	40	40	40	40	40	40
Air Conditioner Size	15,000	15,000	15,000	15,000	15,000	15,000	15,000	15,000
Awning Size	21'	18'	18'	21'	21'	18'	21'	18'
Convertor Size (amps)	55	55	55	55	55	55	55	55
Furnace Rating (Btu)	31,000	31,000	31,000	31,000	31,000	31,000	31,000	31,000
LP Gas Capacity (pounds)	60	60	60	60	60	60	60	60
Tires	225/ 75R15-D	225/ 75R15-D	225/ 75R15-D	225/ 75R15-D	225/ 75R15-D	225/ 75R15-D	225/ 75R15-D	225/ 75R15-D
Water Heater (gallons)	10	10	10	10	10	10	10	10

Notes

- (1) All weights, dimensions, and capacities shown are approximate values.
- (2) Unloaded vehicle weight and carrying capacity will vary depending upon optional equipment. Full propane tanks are factored into cargo carrying capacity. Skyline weighs every unit at the factory. See trailer weight information label located inside the kitchen cabinet door for specific unloaded vehicle weight and carrying capacity.
- (3) Dimensions stated to industry standards. Exterior length includes approximately a four foot hitch on travel trailers. Exterior height includes air conditioner, if installed. Exterior width does not include the width of the awning, if installed.



Skyline Customer Satisfaction

Skyline Customer Satisfaction is more than just a promise. We believe you deserve quality in every aspect of ownership. To ensure your continued satisfaction, we're dedicated to providing you with a quality product along with the very best service available in our industry. Skyline's "Commitment of Excellence" will be a source of pride and satisfaction for you.

Contact your Skyline dealer for details.



NO-NONSENSE WARRANTY

Manufacturing defects reported to Skyline within one year after original retail delivery of your new Travel Trailer or Fifth Wheel by an authorized dealer will be corrected without charge and within reasonable times. Excluded are misuse (including lack of reasonable maintenance), minor imperfections, alterations, and dealer or owner improper transportation, installation, or hookup.

This warranty gives you specific legal rights. You may have other rights which vary from state to state.

Skyline's suppliers often provide additional warranties on their components beyond the Skyline factory bumper-to-bumper warranty. For example — the range, water heater, furnace, convertor, air conditioner, refrigerator, microwave and awning carry two-year supplier warranties. The one-piece roof carries a 12-year warranty. Ask your dealer for full details.

Manufacturer's Notice: All specifications, equipment, and prices are subject to change without prior notice. Production of all models subject to seasonal scheduling. Skyline Corporation reserves the right to improve a model without incorporating these changes in similar models produced at an earlier date.

Consult your automobile dealer and your recreational vehicle dealer to assure the proper match between tow vehicle and trailer. Tow vehicle and recreational unit must be properly equalized for efficient product performance and safety. Before you purchase your recreational vehicle, carefully consider the number of people it will accommodate and its end use. Manufacturer's load capacity restrictions and recommendations must be followed for safe and efficient product performance.

Your Retailer, an independent contractor, who is not an agent of Skyline Corporation, is the party responsible for your purchase contract and any additions, deletions, alterations, or attachments made to or in your recreational vehicle.



For the name of your nearest Skyline-built RV dealer, call:
Hemet, CA 1-888-442-0997
Mansfield, TX 1-800-962-7773
Elkhart, IN 1-800-736-2573

Go RVing.

Or visit us at our Web Site at www.skylinecorp.com