

2012

Floor Plans

Nomad®

84" Wide Retro Travel Trailers

96" Wide Joey Select Travel Trailers

90" & 96" Wide Joey Select Fifth Wheels

96" Wide Park Trailers

102" Wide Destination Travel Trailers



Your local ***Nomad*** dealer is:

SKYLINE®
BRINGING AMERICA HOME. BRINGING AMERICA FUN.

Effective 2011

Standard Features 2012 Destination Travel Trailers

102" Wide

Interior

Cabinets

- Maple Cabinets
- Hardwood Frame Cabinet Doors
- Designer Glass Insert Doors
- Drawers w/Full Extension Ball Bearing Guides
- 40" Tall Kitchen Overhead w/2 Shelves

Decor

- Color-Coordinated Designer Interior
- Decorative Box Valances at Most Windows
- Night Shades & Lambrequin Legs in Living Area
- Drape Panels in Bedroom
- Vertical Blind at Patio Door
- Embossed Vinyl Flooring
- Extra Padded Dinette & Sofa Seat Cushions
- Wall Paper Border in Kitchen & Bath
- Decorative Lighting in Select Areas

Kitchen & Living Area

- 18 cu. ft. Whirlpool® Residential Frost-Free Refrigerator
- Residential-Style 4-Burner Range w/Oven
- 40,000 Btu Furnace w/110 Volt Fan Motor & In-Floor Ducting
- Residential-Style Stainless Steel Sink w/Single Lever Faucet
- Living Room TV Jack
- Park Cable for TV Hookup
- 10 Gallon Gas/Electric/DSI Water Heater
- Patio Door
- Eye-Level Microwave Range w/Integral Range Hood Built In Above Range
- Large U-Shaped Dinette
- Sofa Hide-A-Bed
- Decorative Swivel Rocker (See Floor Plan for Quantity)
- 15,000 Btu DuoTherm Roof-Top A/C w/In-Ceiling Ducting & Down-Draft Grille
- Panel Ceiling Fan
- AM/FM/DVD Stereo w/USB & iPod Inputs

Bedroom

- Color-Coordinated Quilted Bedspread
- Free-Standing Bed w/Frame, Box Springs & Mattress in Master Bedroom

Bath

- ABS Tub & Surround
- Deluxe Medicine Cabinet w/Mirror
- Towel Ring
- Skylight Over Tub
- Residential-Style Porcelain Toilet
- Ceiling Exhaust Fan
- Large Oval Sink Bowl w/Single Lever Faucet
- Residential-Style Single Lever Tub Faucet & Shower Head

Exterior

Roof Construction

- Tapered Roof Construction to Promote Water Runoff
- Seamless One-Piece Roof w/12 Year Manufacturer's Limited Warranty
- Awning Drip Rail

Wall Construction

- Double Wrapped & Sealed Corners
- 2 x 3 Sidewall Studs on 16" Centers (Maximum)
- Steel-Strap Reinforcement on Walls for Superior Durability
- R-7 Settle-Resistant Insulation
- Residential-Style Double-Hung Windows
- Patio Convenience Light
- Entry Screen Door
- Entry Door Assist Handle
- 96" Ceiling Height

Chassis Construction

- Cambered Steel Frame Chassis w/Steel Outriggers
- Detachable Hitch
- Electric Brakes at All Wheels
- Safety Chains & Breakaway Safety Switch
- Stabilizer Jacks
- Triple Entry Steps at Each Entry

Floor Construction

- 5/8" Tongue & Groove Floor Decking
- 2 x 4 Floor Construction, 16" O.C. w/Double 2 x 4 Under Sidewalls
- Tightly Sealed Woven Polyethylene Underbelly

Features

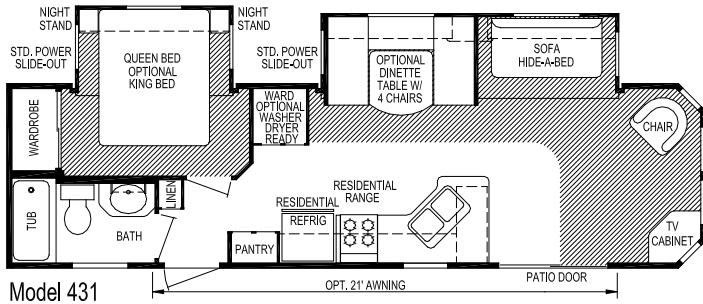
- Electric Slide-Out Rooms for Easy Setup or Storage
- Sliding Glass Patio Door
- 76" Entry Door Heights
- 6-Panel Interior Passage Doors
- 50 amp Service
- Water Heater Bypass
- Carpet Throughout (Except Kitchen & Bath)
- Vinyl Floor Tile Area at Each Entry Door
- Outside Shower

Security & Safety

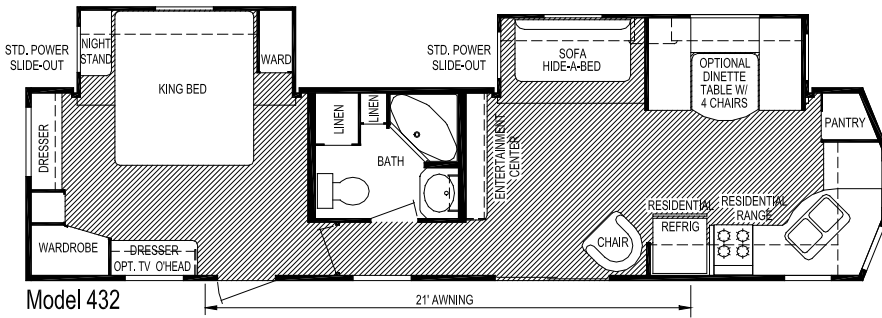
- LP Gas Leak Detector
- Smoke Detector
- Carbon Monoxide Detector
- Fire Extinguisher
- Flush Door Latch w/Integral Dead Bolt Lock

Popular Options

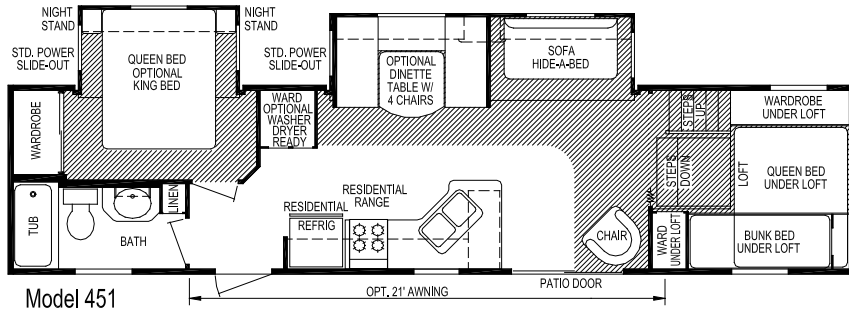
- 21' or 25' A&E® Side Awning
- Fireplace (N/A All Models)
- 19" or 26" LCD TV
- Free-Standing Dinette w/Panoramic Window
- Marine Toilet w/Holding Tank(s)
- Washer/Dryer Ready (N/A All Models)



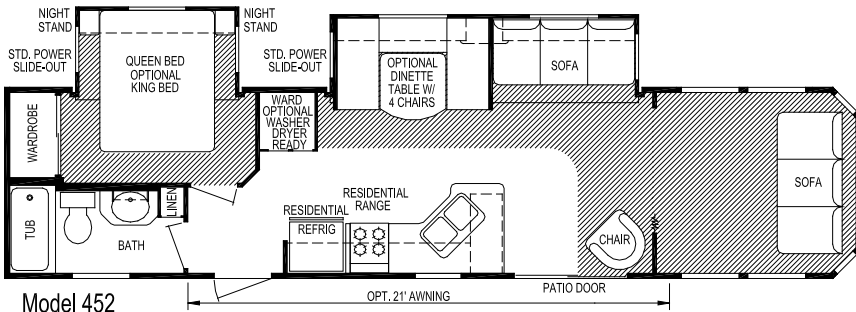
Model 431



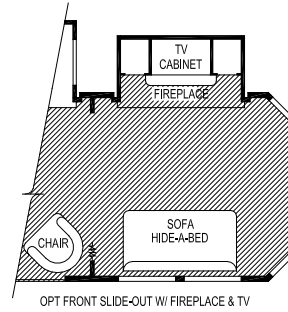
Model 432



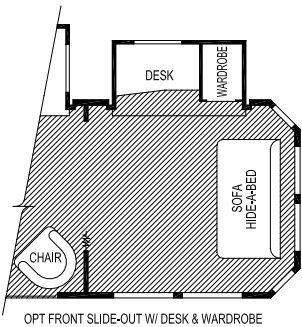
Model 451



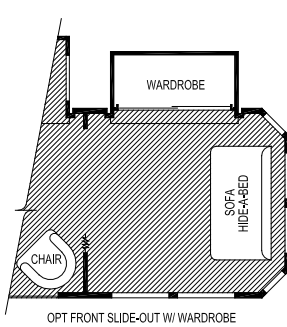
Model 452



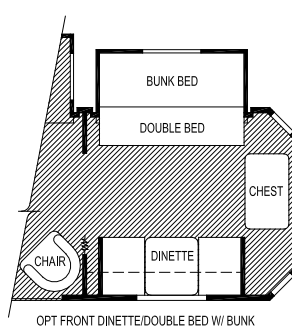
Model 452



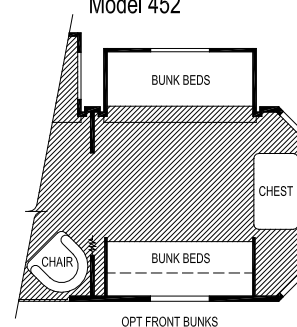
Model 452



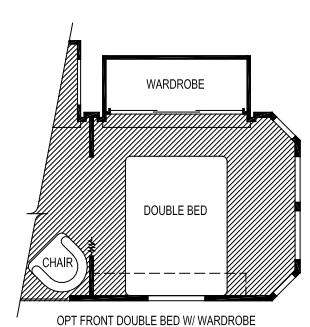
Model 452



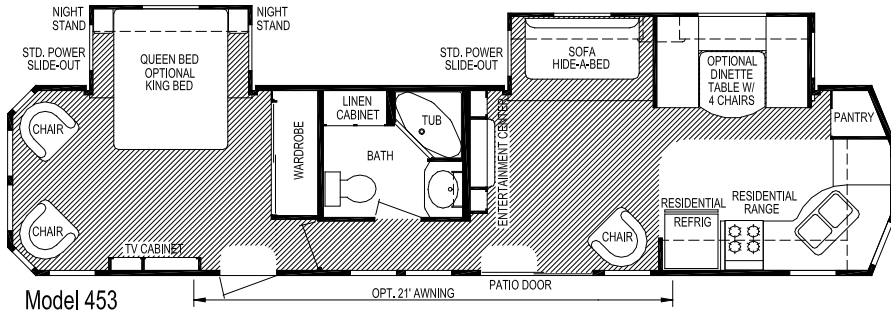
Model 452



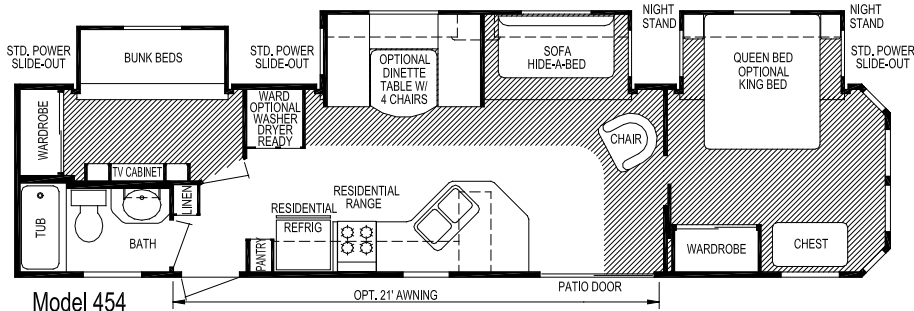
Model 452



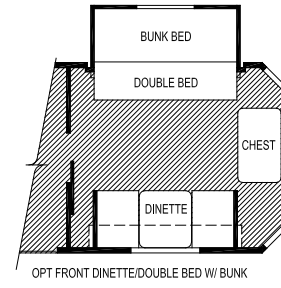
Model 452



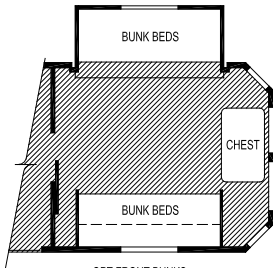
Model 453



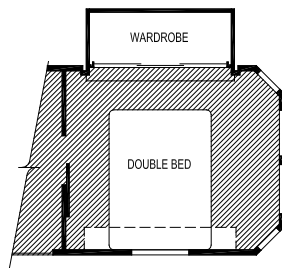
Model 454



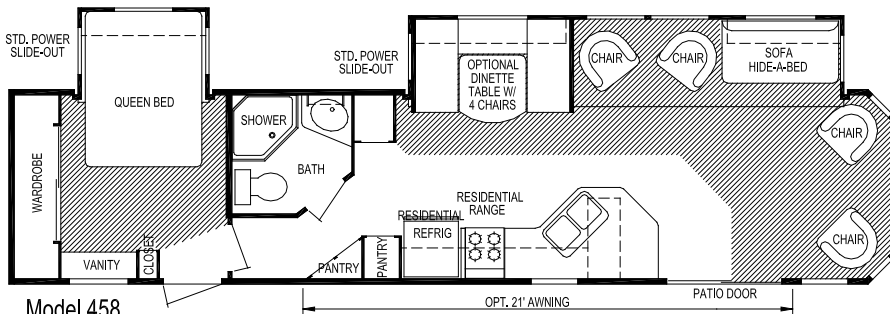
Model 454



Model 454



Model 454



Model 458



Skyline Customer Satisfaction

Skyline Customer Satisfaction is more than just a promise. We believe you deserve quality in every aspect of ownership. To ensure your continued satisfaction, we're dedicated to providing you with a quality product along with the very best service available in our industry. Skyline's "Commitment of Excellence" will be a source of pride and satisfaction for you.

Contact your Skyline dealer for details.



NO-NONSENSE WARRANTY

Manufacturing defects reported to Skyline within one year after original retail delivery of your new Travel Trailer or Fifth Wheel by an authorized dealer will be corrected without charge and within reasonable times. Excluded are misuse (including lack of reasonable maintenance), minor imperfections, alterations, and dealer or owner improper transportation, installation, or hookup.

This warranty gives you specific legal rights. You may have other rights which vary from state to state.

Skyline's suppliers often provide additional warranties on their components beyond the Skyline factory bumper-to-bumper warranty. For example — the range, water heater, furnace, convertor, air conditioner, refrigerator, microwave and awning carry two-year supplier warranties. The one-piece roof carries a 12-year warranty. Ask your dealer for full details.

Manufacturer's Notice: All specifications, equipment, and prices are subject to change without prior notice. Production of all models subject to seasonal scheduling. Skyline Corporation reserves the right to improve a model without incorporating these changes in similar models produced at an earlier date.

Consult your automobile dealer and your recreational vehicle dealer to assure the proper match between tow vehicle and trailer. Tow vehicle and recreational unit must be properly equalized for efficient product performance and safety. Before you purchase your recreational vehicle, carefully consider the number of people it will accommodate and its end use. Manufacturer's load capacity restrictions and recommendations must be followed for safe and efficient product performance.

Your Retailer, an independent contractor, who is not an agent of Skyline Corporation, is the party responsible for your purchase contract and any additions, deletions, alterations, or attachments made to or in your recreational vehicle.



For the name of your nearest Skyline-built RV dealer, call:
Hemet, CA 1-888-442-0997
Mansfield, TX 1-800-962-7773
Elkhart, IN 1-800-736-2573



Or visit us at our Web Site at www.skylinecorp.com