

2012

Floor Plans

Nomad®

84" Wide Retro Travel Trailers

96" Wide Joey Select Travel Trailers

90" & 96" Wide Joey Select Fifth Wheels

96" Wide Park Trailers

102" Wide Destination Travel Trailers



Your local ***Nomad*** dealer is:

SKYLINE®
BRINGING AMERICA HOME. BRINGING AMERICA FUN.

Effective 2011

Dare to Compare

	<u>SKYLINE</u> [®]	<u>Other Brand</u>
3-2-1 Warranty	✓	_____
Individually Weighed — <i>Certified</i> — Posted on Exterior	✓	_____
Rain Tunnel Tested	✓	_____
Simulated Road Tested (Shake Simulator)	✓	_____
Stile & Rail Cabinet Construction on Upper & Lower Cabinets	✓	_____
Seamless One-Piece EPDM Roof with Manufacturer's 12 Year Limited Warranty (Excludes 84" Wide Travel Trailers)	✓	_____
Seamless Aluminum Roof (84" Wide Travel Trailers Only)	✓	_____
Radius Clamp-Ring Windows	✓	_____
Radius Sealed Outside Compartment Doors	✓	_____
5/8" Tongue & Groove Floor	✓	_____
Cambered Chassis	✓	_____
R-7 Insulation	✓	_____
Larger-Capacity Holding Tanks	✓	_____
Upgraded Name Brand Appliances	✓	_____
60 Years in Business	✓	_____



Since 1951, we've been building products that measure up to the expectations of our customers. From the very beginning, we've understood that our customers come first. You're the reason we're in business and every member of the Skyline team is committed to bring you nothing less than the best.

This commitment has earned Skyline its nationwide reputation for leadership and uncompromising integrity. Our designers, engineers, and production people work as a team to build RVs that meet your needs. The best RVs at the best prices. Each backed by a straightforward one-year full warranty and a nationwide customer service program that is short on red tape and long on results.

Skyline is a solid corporate citizen having no corporate debt and a strong cash position. For our customers, this means that Skyline has the financial muscle to stand in back of its products and you can count on the fact that Skyline will be around if you ever need us.

For us at Skyline, "*Bringing America Home. Bringing America Fun.*" is more than a slogan. It is a statement of our responsibility to a country that has been good to us. It is a pledge to extend our record of leadership, to continue the long tradition of superior service, and to strengthen the trust placed in us by the customers we are privileged to serve. It is our determination to serve America and its people with quality, affordable recreational vehicles for many years to come.



*Limited Production Product. Subject to Dealer's Available Inventory.

Interior

Cabinets

- High Pressure Laminate Counter Tops
- Maple Cabinet Color Choices

Decor

- Color-Coordinated Designer Interiors
- Embossed Vinyl Flooring
- Padded Dinette Seat Cushions
- Mini Blinds at All Windows Except Bunks

Kitchen & Living Room

- 3 cu. ft. Dometic® Gas / Electric Refrigerator
- Wedgewood® 2 Burner Range Top
- 0.7 cu. ft. Dometic® Microwave Oven w/Turntable & Clock
- Acrylic Kitchen Sink w/Faucet
- 12 Volt Demand Water Pump
- 16,000 Btu Furnace
- 5 MBtu Air Conditioner
- 35 amp 12 Volt Power Converter w/120 Volt Load Center
- Six Gallon Gas Water Heater
- TV Antenna w/Living Area Jack

Bath

- ABS Tub w/Tub Faucet, Shower Hose & Head
- Shower Curtain
- Hand Flush Thetford Toilet
- Towel Ring & Toilet Paper Holder

Exterior

Roof Construction

- Seamless One-Piece Aluminum Roof
- Awning Drip Rail & Down Spouts

Wall Construction

- Wall Studs on 16" Centers (Maximum)
- Steel Strap Reinforcement on Walls for Superior Durability
- R-7 Settle-Resistant Insulation
- Twist Locks on All Storage Doors
- Clamp Ring Radius Corner / Dark Tint Safety Glass Windows
- Patio Convenience Light
- Radius Entry Door w/Screen
- Assist Handle at Entry Door

Chassis Construction

- Cambered Tubular Steel Chassis w/Steel Outriggers
- Battery Rack
- Chassis-Mounted Entry Step
- Electric Brakes at All Wheels
- Spare Tire & Carrier
- Safety Chains & Breakaway Safety Switch
- Two Stabilizer Jacks
- Sidewinder Tongue Jack w/Foot

Floor Construction

- 5/8" Tongue & Groove Floor Decking
- Tightly Sealed Woven Polyethylene Underbelly

Features

- Single 20 lb. LP Propane Tank
- Holding Tanks w/Drain Outlet
- Rear Bumper w/Sewer Hose Carrier
- 10' A&E® Sunchaser Side Awning

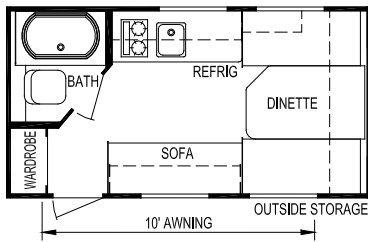
Security & Safety

- Smoke Detector
- Propane Leak Detectors
- Carbon Monoxide Alarm
- Flush Door Latch w/Integral Dead Bolt Lock
- Fire Extinguisher

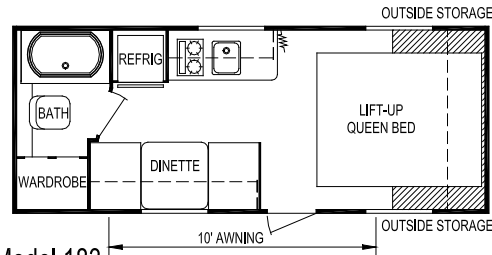
Popular Options

- AM/FM/CD Stereo w/4 Speakers
- (2) Outside Speakers

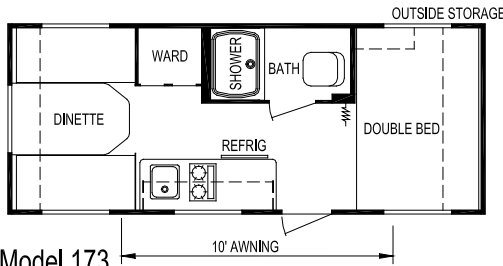




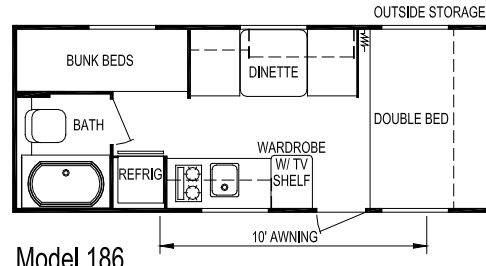
Model 140



Model 183



Model 173



Model 186

Specifications

Model	140	173	183	186
Weights Unloaded Vehicle Weight (see Note 2)	2,025	2,625	2,725	2,725
Dry Hitch Weight	325	375	325	325
Dry Axle Weight	1,700	2,250	2,400	2,400
GVWR (Total Capacity of Trailer)	2,850	3,850	3,850	3,850
Carrying Capacity (see Note 2)	750	1,125	1,000	1,025
Accommodations Sleeping (standard / optional)	3	4	3	5
Bed Size	N/A	54" x 80"	60" x 74"	54" x 80"
Second Bed Size	N/A	N/A	N/A	(2) 28" x 75"
Dinette Size	52" x 80"	52" x 80"	30" x 76"	30" x 75"
Sofa	22" x 59"	N/A	N/A	N/A
Measurements Exterior Length (see Note 3)	15'-10"	20'-1"	20'-4"	20'-6"
Exterior Width (see Note 3)	84"	84"	84"	84"
Exterior Height (see Note 3)	8'-2"	8'-4"	8'-4"	8'-4"
Interior Height	73"	73"	73"	73"
Capacities Fresh Water System (gallons)	17	17	27	27
Gray Water Tank (gallons)	15	15	15	15
Black Water Tank (gallons)	9	9	9	9
Air Conditioner Size (Btu)	5,000	5,000	5,000	5,000
Awning Size	10'	10'	10'	10'
Convertor Size (amps)	35	35	35	35
Furnace Rating (Btu)	16,000	16,000	16,000	16,000
Propane Gas Capacity (pounds)	20	20	20	20
Tires	ST185/80R13-C	ST205/75R14-C	ST205/75R14-C	ST205/75R14-C
Water Heater (gallons)	6	6	6	6

Notes

- (1) All weights, dimensions, and capacities shown are approximate values.
- (2) Unloaded vehicle weight and carrying capacity will vary depending upon optional equipment. Full propane tanks are factored into carrying capacity. Skyline weighs every unit at the factory. See trailer weight information label located inside the front entry door for specific unloaded vehicle weight and cargo carrying capacity.
- (3) Dimensions stated to industry standards. Exterior length includes approximately a four foot hitch on travel trailers. Exterior height includes air conditioner, if installed. Exterior width does not include the width of the awning, if installed.



Skyline Customer Satisfaction

Skyline Customer Satisfaction is more than just a promise. We believe you deserve quality in every aspect of ownership. To ensure your continued satisfaction, we're dedicated to providing you with a quality product along with the very best service available in our industry. Skyline's "Commitment of Excellence" will be a source of pride and satisfaction for you.

Contact your Skyline dealer for details.



NO-NONSENSE WARRANTY

Manufacturing defects reported to Skyline within one year after original retail delivery of your new Travel Trailer or Fifth Wheel by an authorized dealer will be corrected without charge and within reasonable times. Excluded are misuse (including lack of reasonable maintenance), minor imperfections, alterations, and dealer or owner improper transportation, installation, or hookup.

This warranty gives you specific legal rights. You may have other rights which vary from state to state.

Skyline's suppliers often provide additional warranties on their components beyond the Skyline factory bumper-to-bumper warranty. For example — the range, water heater, furnace, convertor, air conditioner, refrigerator, microwave and awning carry two-year supplier warranties. The one-piece roof carries a 12-year warranty. Ask your dealer for full details.

Manufacturer's Notice: All specifications, equipment, and prices are subject to change without prior notice. Production of all models subject to seasonal scheduling. Skyline Corporation reserves the right to improve a model without incorporating these changes in similar models produced at an earlier date.

Consult your automobile dealer and your recreational vehicle dealer to assure the proper match between tow vehicle and trailer. Tow vehicle and recreational unit must be properly equalized for efficient product performance and safety. Before you purchase your recreational vehicle, carefully consider the number of people it will accommodate and its end use. Manufacturer's load capacity restrictions and recommendations must be followed for safe and efficient product performance.

Your Retailer, an independent contractor, who is not an agent of Skyline Corporation, is the party responsible for your purchase contract and any additions, deletions, alterations, or attachments made to or in your recreational vehicle.



For the name of your nearest Skyline-built RV dealer, call:
Hemet, CA 1-888-442-0997
Mansfield, TX 1-800-962-7773
Elkhart, IN 1-800-736-2573

Go RVing.

Or visit us at our Web Site at www.skylinecorp.com