

**SPRINTER**  
COPPER CANYON EDITION



**SPRINTER**

COPPER CANYON EDITION 

[WWW.KEYSTONE-COPPERCANYON.COM](http://WWW.KEYSTONE-COPPERCANYON.COM) | FIFTH WHEELS | [WWW.KEYSTONERV.COM](http://WWW.KEYSTONERV.COM)



252FWRLS IN BLACKSTONE DECOR

# SPRINTER

COPPER CANYON EDITION 

LUXURY YOU'LL LOVE,  
VALUE YOU CAN LIVE WITH.

Built upon the foundation of Keystone's first product line, Copper Canyon by Sprinter "Makes Camping Easy" by combining luxury and value in one beautiful fifth wheel. And with a variety of floorplans ranging from rear living room models, side aisle models, and bunk house models, you can select the Copper Canyon that is just right for the way you live.



All NEW  
outdoor kitchen



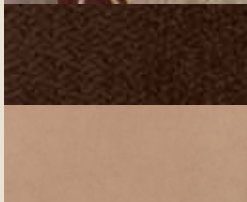
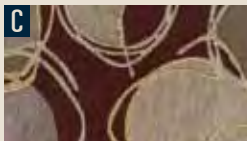
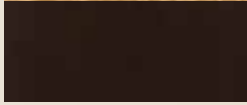
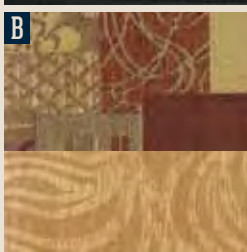
SCAN TO VIEW A 360°  
INTERIOR VIRTUAL TOUR



Get the free mobile app  
at <http://gettag.mobi>  
and scan this Tag.

## DECOR

- A. BLACKSTONE
- B. ELMWOOD
- C. SEASCAPE





## GOT HEAVY ITEMS?

With our full extension steel drawer guides we can handle it!



Remember we said we give you a place to store everything? Well, you can even store all of your kitchen tools out of sight with our oversized pots and pans drawer.

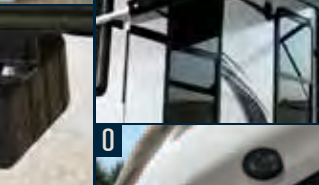
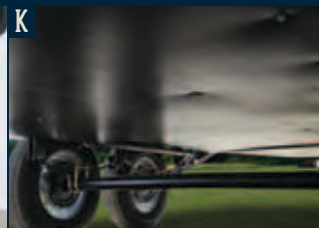
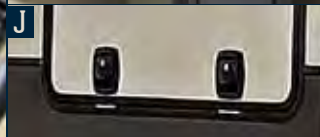
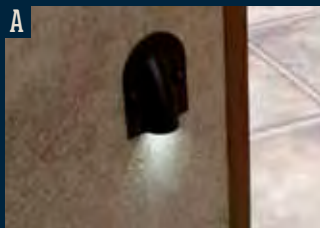


## NEED SOME REST?

With our plush new mattress you will awake rejuvenated and ready for a new day of activities!



252FWRLS IN BLACKSTONE DECOR

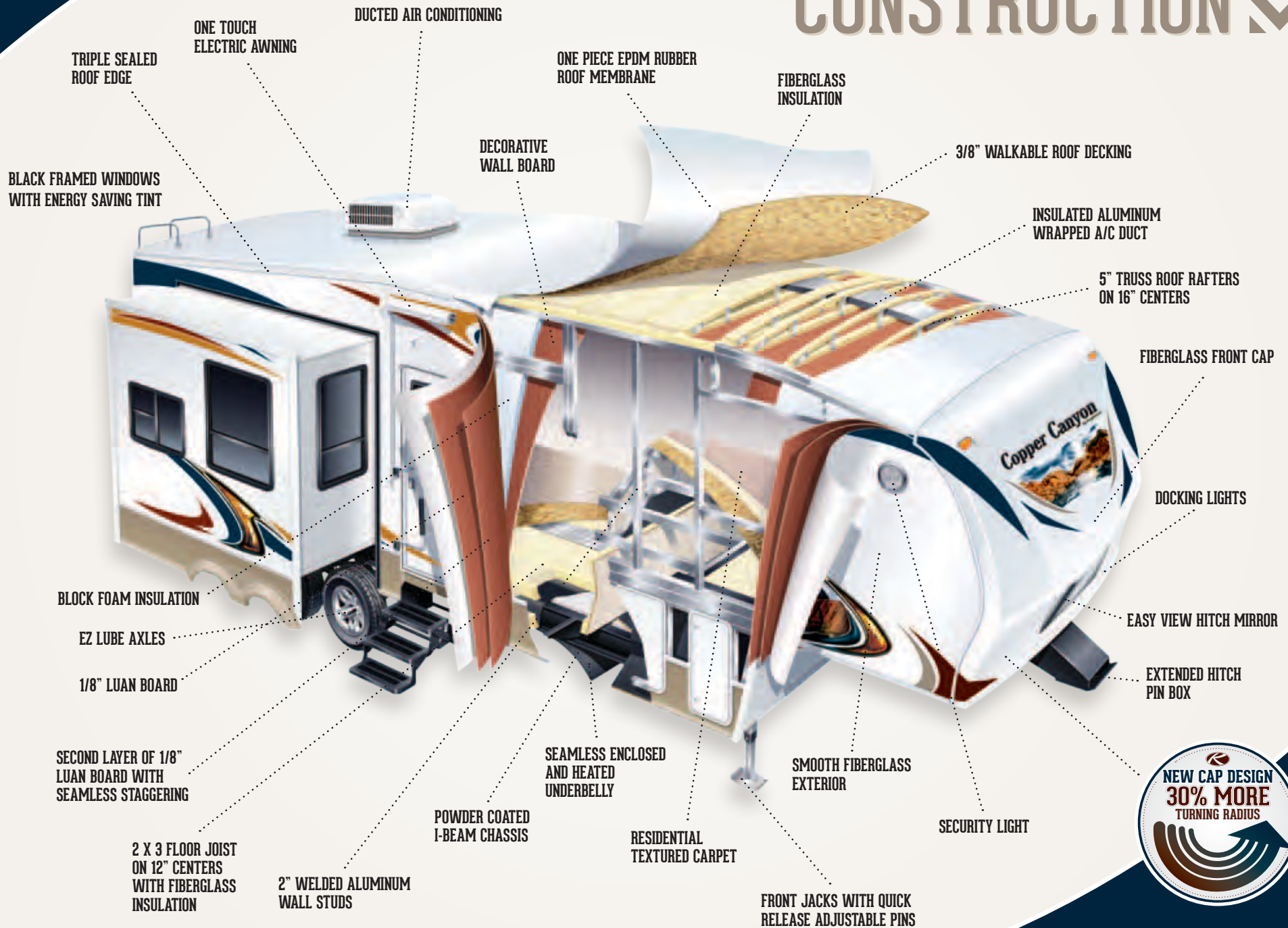


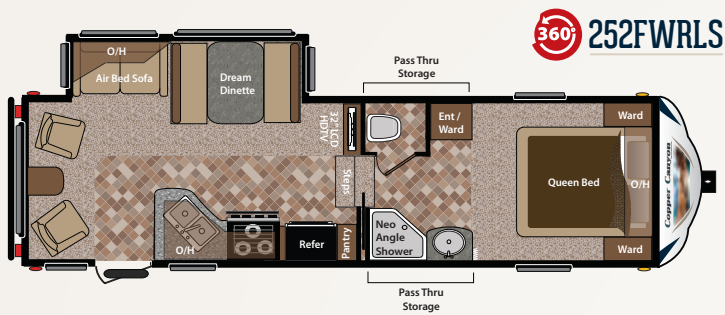
## FEATURES

- A. LED FLOOR LIGHTING
- B. EXTERIOR BACK UP LIGHT
- C. SPACIOUS PASS THROUGH STORAGE
- D. ENTRY STEPS WITH LIGHT
- E. BATTERY DISCONNECT
- F. EXTRA LARGE GRAB HANDLE
- G. DIGITAL THERMOSTAT
- H. EXTERIOR TOY LOCK
- I. EASY STORE PICNIC TABLE
- J. SLAM BAGGAGE DOORS
- K. FULLY ENCLOSED UNDERBELLY
- L. DOCKING STATION
- M. COMMAND CENTER
- N. ELECTRIC AWNING
- O. LED LIGHTED EZ VIEW HITCH MIRROR
- P. ALUMINUM WHEELS

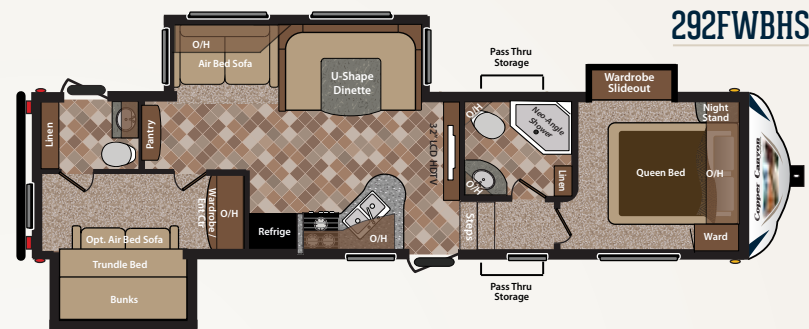


# CONSTRUCTION

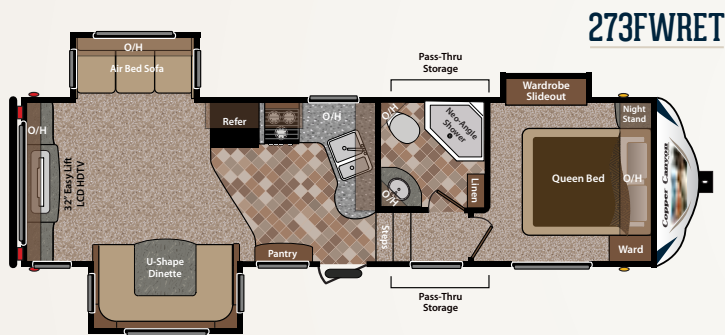




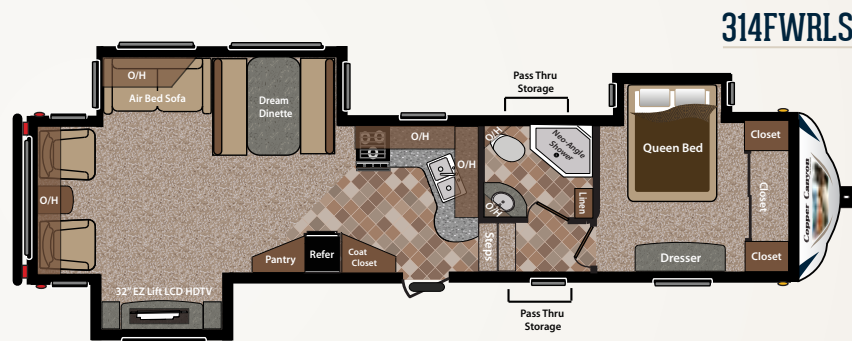
**360° 252FWRLS**



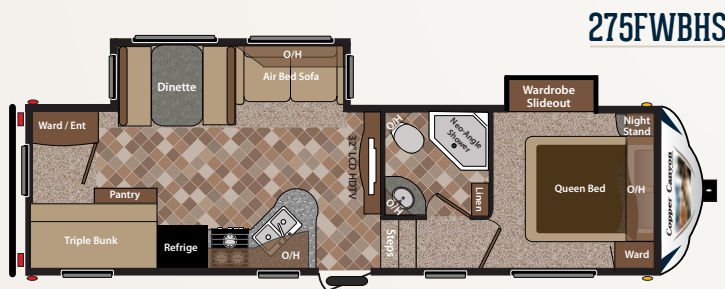
**292FWBHS**



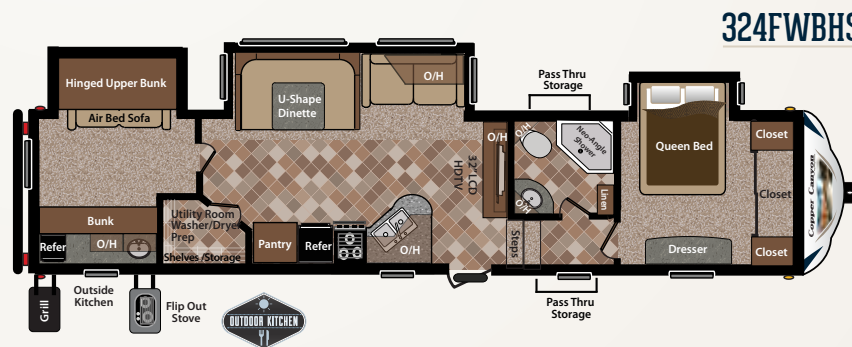
**273FWRET**



**314FWRLS**



**275FWBHS**



**324FWBHS**

# FLOORPLANS

MODEL	252FWRLS	273FWRET	275FWBHS	292FWBHS	314FWRLS	324FWBHS
SHIPPING WEIGHT	7184	7990	7840	9311	9673	10690
CARRYING CAPACITY	2936	2395	2675	2594	2827	3470
HITCH WEIGHT	1320	1585	1715	1745	1920	2160
EXTERIOR LENGTH	28' 11"	30' 11"	31'	34' 7"	36'	38' 6"
EXTERIOR HEIGHT	12'	12'	12'	12'	12' 8"	12' 8"
FRESH WATER	44	47	44	47	47	47
WASTE WATER	32	32	32	64	32	32
GRAY WATER	64	32	64	64	32	96
LPG CAPACITY LB.	60	60	60	60	60	60

## WEIGHTS & MEASUREMENTS

DISCLAIMER: Product information is as accurate as possible as of the date of publication of this brochure. All features, floor plans, and specifications in this brochure are subject to change without notice. Please also consult Keystone's web site at [www.keystonerv.com](http://www.keystonerv.com) for more current product information and specifications. **Tow Vehicle Disclaimer.** CAUTION: Owners of Keystone recreational vehicles are solely responsible for the selection and proper use of tow vehicles. All customers should consult with a motor vehicle manufacturer or their dealer concerning the purchase and use of suitable tow vehicles for Keystone products. Keystone disclaims any liability or damages suffered as a result of the selection, operation, use or misuse of a tow vehicle. **KEYSTONE'S LIMITED WARRANTY DOES NOT COVER DAMAGE TO THE RECREATIONAL VEHICLE OR THE TOW VEHICLE AS A RESULT OF THE SELECTION, OPERATION, USE OR MISUSE OF THE TOW VEHICLE.** 04/12



Get the free mobile app at <http://gettag.mobi> and scan this Tag.



# STANDARDS & OPTIONS

## EXTERIOR FEATURES

- Laminated aluminum framed sidewalls
- Enclosed underbelly w/ direct vent heat
- Fiberglass front cap w/mirror and lights
- E-Z Lube axles
- One touch electric awning
- Friction hinge entry door
- Bus style slam baggage doors
- Rear bumper storage
- Easy opening triple entry step
- Entry step light
- Extra large folding grab handle
- Tough guard painted skirt metal
- Patio light
- Extra long rain gutters and spouts
- Two 30 LBS LP bottles with automatic change-over
- Battery disconnect system
- Roto-cast seamless holding tanks
- Keystone original space maker 47 gallon fresh water system
- Docking station
- Black tank flush system in docking station
- Spray port with hot and cold water in docking station
- City water connection in docking station
- Fresh water tank fill in docking station
- Cable and satellite hook-up in docking station
- 30' power cord
- LP gas BBQ hook-up
- Electric front jacks
- Radial tires
- Spare tire
- Outside speakers
- Light at termination points
- Rear ladder
- Wire and frame for a second A/C (324FWBHS, 314FWRLS 292FWBHS only)
- 50 amp service (324FWBHS, 314FWRLS, 292FWBHS only)
- Picnic table in pass through
- Back-up light
- Toylok security system
- Easy access manual override for the slide rooms
- Upgraded two burner cooktop (Outside Kitchen models only)

- Bumper mounted grill (Outside Kitchen models only)
- 12V Power plug (Outside Kitchen models only)
- TV hook up in pass thru storage for outside viewing
- Easy access winterization
- Jealousy windows
- 80% Tint windows
- Hitch light
- Door side and off door side clearance lights

## INTERIOR FEATURES

- 13,500 BTU ducted air conditioner with "Quick Cool" (15K std in 292, 314 and 324)
- 30 amp electrical distribution panel (50 Amp std in 292, 314 and 324)
- 12 Volt, 55 amp converter
- 30,000 BTU auto-ignition furnace
- Windows in both slide room end walls
- Digital Thermostat
- Water heater bypass for easy winterization
- Residential cabinet hardware
- Large picture window at the dinette
- 6' 3" interior slide room height
- 12 volt slide room lights for dry camping
- Overhead slide room cabinets
- Screwed cabinetry w/lumber core stiles
- Beauflor linoleum
- Home theater surround sound system
- In floor ducted heat
- Command center for awning, slide-outs, tank monitors, lights and battery
- Full extension ball bearing drawer guides
- Residential slide out pantry
- LED floor lighting
- Easy find light switches
- Washer/Dryer prep (324FWBHS only)

## LIVING ROOM FEATURES

- Cable TV hook-up with antenna and signal booster
- Satellite prep w/ RG6 cable
- High grade carpeting with pad
- Residential fabric-covered valances
- Angled overhead storage in the slide room
- Home theater DVD/CD/AM/FM/MP3 hook-up

- Air bed sofa w/ storage drawer
- 32" HD LCD television
- Ceiling fan with light (314 and 324)

## BATH FEATURES

- Large vanity sink
- Porcelain foot flush toilet
- Residential medicine cabinet with mirror
- ABS one piece tub surround
- Neo angle glass shower
- Skylight over tub
- Retractable clothes line in the shower/tub
- Reinforced tub support
- Power roof vent fan
- GFI receipts in the bathroom

## KITCHEN FEATURES

- 6 gallon gas and electric DSI auto ignition water heater w/ 16.2 gph recovery (252, 275, and 295 only)
- 10 gallon gas and electric DSI auto ignition water heater w/16.2 gph recovery (292, 314, and 324 only)
- 3 burner high output gas range
- American Stonecast under-mount deep 60/40 residential sink
- Full extension ball bearing drawer guides
- Metal pull-out sprayer faucet
- Waste basket storage
- Lighted range hood with exhaust fan
- Microwave with carousel
- 17" oven
- Reversible dinette seat cushions
- Double door refrigerator
- Six panel wood refrigerator front
- Raised panel cabinet doors throughout
- Overhead cabinets above the sink
- Two oversized pots and pan drawers

## BEDROOM FEATURES

- Cable TV hook-up
- High grade carpeting with pad
- Under bed storage with gas struts
- Color matched bedspread
- Bedroom reading lights
- Electrical outlets near the bed
- Dream collection mattress
- Headboard niche with puck lighting

## SAFETY FEATURES

- Tinted safety glass windows
- Dual hitch safety chains
- Fire extinguisher
- Smoke detector
- Carbon monoxide detector
- Egress windows
- LP gas leak detector
- Break away safety brake
- 4 wheel electric brakes
- Security light

## CAMPING MADE EASY PACKAGE

- E-Z Lube axles
- Electric awning
- Battery disconnect
- Back-Up light
- Easy access manual override for the slide rooms
- Friction hinge entry door
- Toylok security system
- Picnic table in pass through
- Docking station (Includes city water, fresh water tank fill, black tank flush, spray port with hot and cold water, cable and satellite hook-up)
- LED floor lighting
- Dream collection mattress
- Gas/electric water heater with 16.2 gph recovery
- DVD theatre system with outside speakers
- Exterior BBQ hook-up
- Bumper mount grill (Outside Kitchen models only)
- Exterior speakers
- Easy find light switches
- 12V Plug in Outside Kitchen models

## POPULAR OPTIONS

- 10 gallon water heater (273, **STD in 292,314,324**)
- Upgraded 15,000 BTU air conditioner (252, 273 and 275. **STD in 292,314,324**)
- Free standing dinette with four chairs
- Extra large refrigerator (252, 273 and 275. **STD in 292,314,324**)
- 2 gliders ipo rockers (252, 314)
- 68" air bed sofa ipo lower bunk and trundle (292 only)



Go RVing



Keystone RV Company

WWW.KEYSTONERV.COM

574.535.2100 • 2642 HACKBERRY DRIVE  
P.O. BOX 2000 • GOSHEN, IN 46527

WWW.KEYSTONE-COPPERCANYON.COM