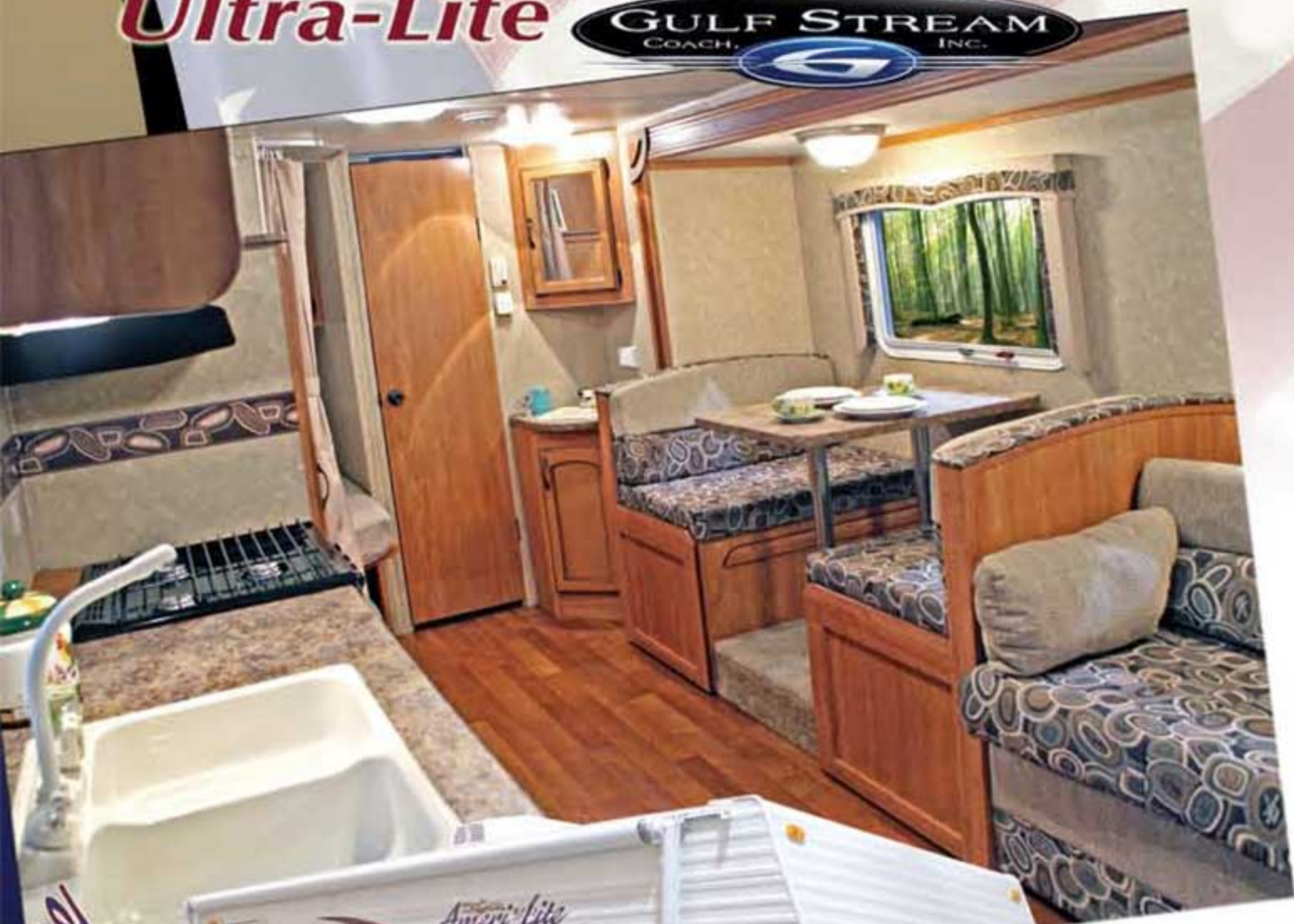


Ameri Lite

Ultra-Lite



Ameri Lite
Ultra-Lite



Quality, Value & Innovation Since 1983

Ameri Lite

Ultra-Lite

Rediscover America!
It's spacious, open and
the views are spectacular.

For that home away from home feel, nothing beats the Ameri-Lite for spaciousness and livability! Choose the floor plan that fits your family's needs, pick your favorite decor from the professionally designed interior decor packages, and start enjoying quality time with your family in tow - only in the Ameri Lite by Gulf Stream.



At Gulf Stream we know the importance of feeling comfortable in the kitchen. Meals will be a pleasure to prepare in the Ameri Lite's efficiently designed kitchen space.

Plenty of
counter space,
storage &
conveniences!



**3 in 1 feature • from sofa to
sleeper to extra hidden storage**



**Crank out windows keep you dry
while circulating fresh air**

Some of the Many Standards

- One piece roof (12 year warranty)
- Abundant outside storage
- Electric brakes
- Furnace with electric ignition
- Tubular steel, Cambered frame
- Floor joists - 13" on center
- Floor decking screwed and glued
- Wall studs every 16" or less on center
- Radius entry door
- Roller bearing drawer guides
- Hardwood drawer fronts
- Vinyl lined drawers
- Tapered roof rafters
- Fiberglass insulation - hand cut and glued
- 6 gallon gas water heater
- Hardwood mortise and tenon cabinet doors
- Mini blinds throughout
- 3-burner range top
- Flush mount refrigerator
- Easy store sofa/bed (most models)
- System monitor panel
- Designer window treatments
- Bed lifts for easy access
- 45 amp power converter

LE Package

- Roof air conditioner
- Roll out awning
- Microwave oven
- TV antenna
- Stabilizer jacks

Platinum Package

- AM/FM CD/DVD Touchplex stereo theatre
- 3 burner cooktop with oven
- Outside shower
- Extra cabinet overhead
- Upgraded TV antenna



Lined drawers with roller bearing guides for ease and cleanliness

Floor Plans & Specifications



MODEL 15 FD

Length 17'2"
Width 90"
Height w/AC 114"
Interior Height 6'4"

Carrying Capacity 1,572
Hitch Weight 360
Dry Weight 2,288
Fresh Water 30
Waste Water Tank 54



MODEL 15 BH

Length 17'2"
Width 90"
Height w/AC 114"
Interior Height 6'4"



MODEL 21 MB

Length 22'7"
Width 90"
Height w/AC 114"
Interior Height 6'4"

Carrying Capacity 1,125
Hitch Weight 340
Dry Weight 3,215
Fresh Water 30
Waste Water Tank 54



MODEL 22 RS

Length 24'4"
Width 90"
Height w/AC 116"
Interior Height 6'4"



MODEL 24 BH

Length 25'1"
Width 90"
Height w/AC 114"
Interior Height 6'4"

Carrying Capacity 2,295
Hitch Weight 430
Dry Weight 3,625
Fresh Water 30
Waste Water Tank 54



MODEL 24 RK

Length 27'5"
Width 90"
Height w/AC 116"
Interior Height 6'4"



MODEL 255 BH

Length 28'10"
Width 90"
Height w/AC 116"
Interior Height 6'4"

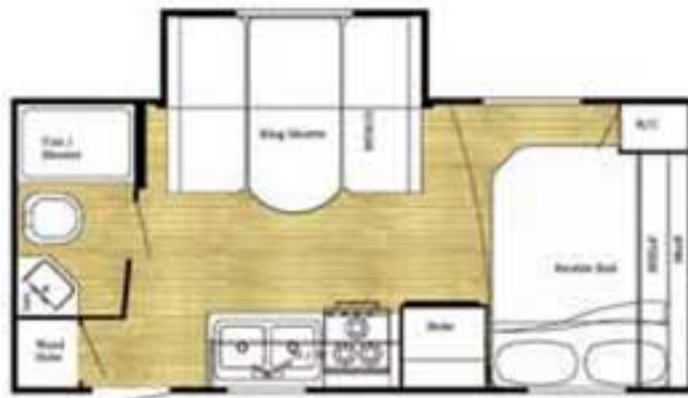
Carrying Capacity 2,740
Hitch Weight 620
Dry Weight 4,880
Fresh Water 30
Waste Water Tank 54



MODE

Length
Width
Height w/
Interior H

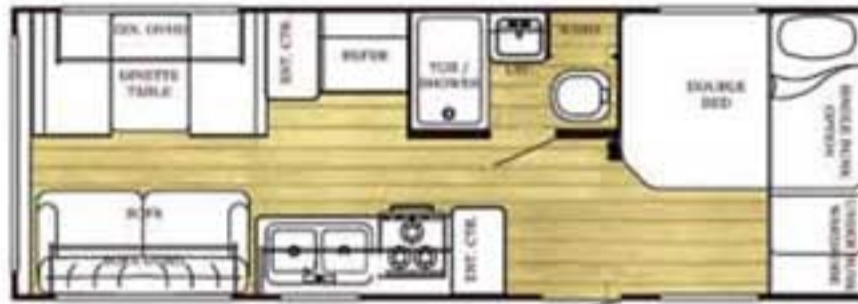
Interior Decor



MODEL 19 KD

Length 21'8"
Width 90"
Height w/AC 116"
Interior Height 6'4"

Carrying Capacity 3,632
Hitch Weight 360
Dry Weight 3,728
Fresh Water 30
Waste Water Tank 54



MODEL 23 BW

Length 26'2"
Width 90"
Height w/AC 114"
Interior Height 6'4"

Carrying Capacity 2,742
Hitch Weight 670
Dry Weight 3,928
Fresh Water 30
Waste Water Tank 54



MODEL 25 BH

Length 27'5"
Width 90"
Height w/AC 116"
Interior Height 6'4"

Carrying Capacity 3,500
Hitch Weight 440
Dry Weight 3,940
Fresh Water 30
Waste Water Tank 54



MODEL 27 BH

Length 29'11"
Width 90"
Height w/AC 116"
Interior Height 6'4"

Carrying Capacity 2,759
Hitch Weight 660
Dry Weight 4,901
Fresh Water 30
Waste Water Tank 54

All weights shown are in dry condition, without options or fluids. Please add additional options and features. Consult the weight tag inside kitchen cabinet and your tow vehicle owners manual for more information.



Ameri-Lite
Ultra-Lite



The image shows the interior of a motorhome. A dining table with a light-colored, speckled top is set with two green mugs, two white plates, and a purple bowl. The table is supported by a black metal frame. A patterned bench with a floral design is positioned around the table. To the right, a window with a decorative frame offers a view of a mountain range. A small potted plant with white flowers sits on the table near the window. The walls are light-colored with wood trim, and the floor is covered in a light-colored carpet. A large, dark blue curved shape is on the left side of the image.

We offer
11 unique floor plan
arrangements - rest
assured there's one
perfect for you

Look inside for details
on our Easy Store Sofa!

- Sofa
- Sleeper
- Hidden Storage

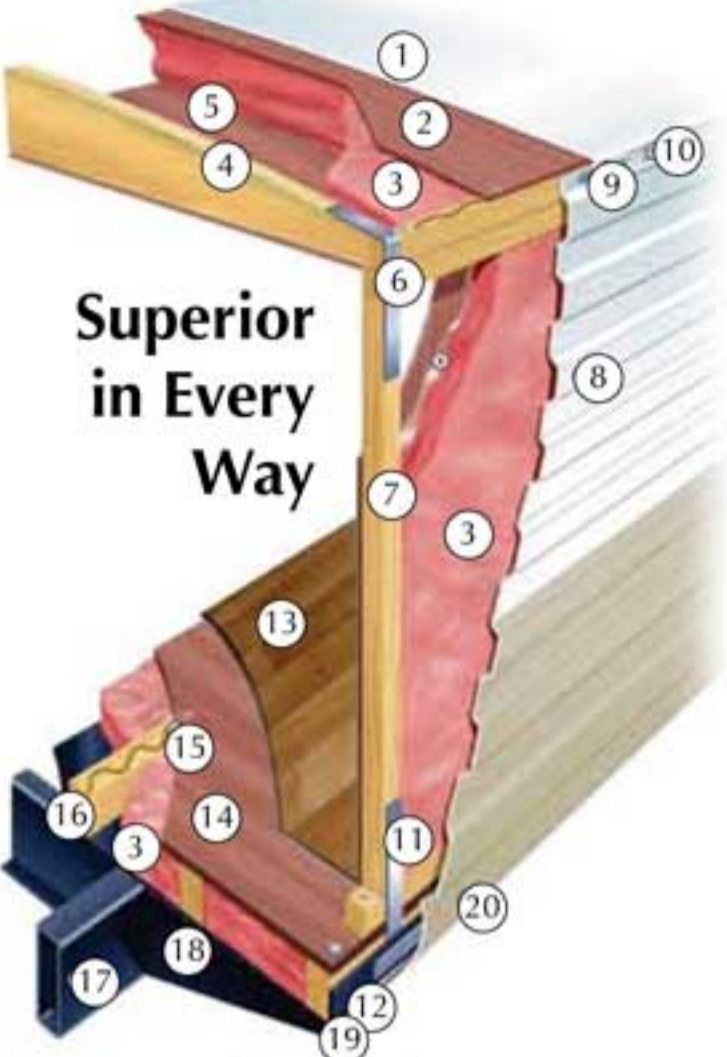


Quality, Value & Innovation Since 1983
 Gulf Stream Coach is a privately owned company with over 26 years of RV manufacturing experience.

RV dealers and consumers look to Gulf Stream for high-value products offering quality construction, innovative features, contemporary design, unmatched service, and continual support.

Gulf Stream offers the largest product line in the industry. From entry level travel trailers to luxury motorhomes - all use the most advanced manufacturing techniques.

www.GulfStreamcoach.com



**Superior
in Every
Way**

1. One-piece, seamless roof with 12 year warranty
2. Strong wood roof decking, glued and screwed
3. Thick blanket of hand-cut fiberglass insulation for long lasting energy efficiency. Glued to bond to sidewalls to prevent slipping
4. Solid roof rafter
5. Interior ceiling board
6. Galvanized steel straps - used to increase the roof-to-sidewall strength
7. Sturdy wood sidewall construction, 16" on centers (Walls are always set on the floor, not next to it, for maximum strength -and screwed into place)
8. Exterior aluminum siding with baked enamel finish
9. Butyl caulking for superior seal and less black streaks
10. Drip rail/awning rail, screwed to roof framing helps keep unit clean
11. Galvanized steel straps used to increase the sidewall-to-floor transition strength and solidify our unibody construction
12. Tough poly max underbelly wrapped up sides and end protects against moisture and debris
13. Durable heavy gauge linoleum floor covering
14. 5/8" floor decking glued and screwed to floor joists (NA 15' and 17')
15. Thick blanket of fiberglass insulation
16. Sturdy wood floor joist system, 13" or less O.C.
17. Tubular steel frame
18. Full width steel outriggers - superior strength & support
19. Steel bolts to secure floor to steel outriggers
20. Heavy gauge radius lower model



**24 Month Warranty
on Structural Components***

In addition to our standard one year warranty, Gulf Stream Coach, Inc. offers an exclusive 24 month warranty on structural components. In addition, major component manufacturers are providing 24 month warranties on their products installed in Gulf Stream units such as refrigerator, antenna, furnace, water heater, air conditioner, awning, range, microwave and more. See official written Gulf Stream warranty for complete details and restrictions.

Post Office Box 1005 Nappanee, IN 46550

• Your Gulf Stream Coach Dealer •
RVWholesalers.com
 530 North Main St.
 PO Box 227
 Lakeview, OH 43331

For more information and available options, contact your local Gulf Stream Dealer, www.GulfStreamcoach.com, or Gulf Stream Coach, Inc. Gulf Stream: Reserves the right to make changes in prices, colors, materials, components, and specifications and to discontinue models at any time without notice or obligation. Assumes no responsibility for any error in type or print reproduction of specifications or floor plans in this brochure. Photos may show equipment or items that are optional and are not included in the price of the trailer. Experience and review a current model at your nearest dealer. ©2010 Gulf Stream Coach, Inc. Nappanee, Indiana U.S.A.