

BRISTOL BAY

by SunnyBrook



WHERE LUXURY AND VALUE MEET.



Model 3155 RK in Cocoa Bay

■ ■ ■ *Experience the Difference.*





Model 3455 CK

- 1 Our large 60 x 80 inch bed, oversized lavatory sink, tub/shower surround with glass door, and bathroom power vent are nice amenities.
- 2 3455 CK kitchen offers an abundance of counter-top, a spacious pantry and plenty of storage!
- 3 You'll find a spacious bedroom, bath and dressing area.
- 4 This 3455 CK floorplan shown in *Tranquility* offers two large slideouts making an incredible living area with a unique kitchen area.



3



2



Model 3150 FWRL

STANDARDS + OPTIONS

Exterior + Construction

MOR-ryde® CRE/3000	Heated and Enclosed Tanks	Radius Baggage Doors	5/8" Plywood Flooring
I-Beam Frame	Full Walk on Rubber Roof	Super Lube Axles	15.0 Ducted Air Conditioner
High Gloss Gel Coat Exterior	30" Radius Entry Door	Awning	Ducted Floor Heat
Fiberglass Front and Rear Cap	High Illumination Scare Light	Stabilizer Jacks	Extra Large Storage
R-8 Insulation, Sidewall*, R-23 Floor*, Roof*	Large Swing Out Entry Handle	Power Front Jacks (fifth wheels only)	Rear Ladder
50 Amp Service	Dual 30lb. LP Tanks	56 Gallon Fresh Water Tank	Pre-Wire for Second A/C

Interior

Porcelain Foot Flush Toilet	Pull-Out Kitchen Faucet	Poplar Wood Cleats (a true hard wood)
Night Shades	Under Bed Storage with Gas Struts and Safe	Bathroom Power Vent
Satellite Prep	Oversized Lavatory Sink	Free Standing Table and Chairs
Rebond Carpet Padding	True 5.1 Stereo Surround	60" x 80" Bed
Cable TV Hookup	AM/FM/DVD 5.1 Entertainment Center	Angled and Stylish Overhead Cabinetry
Glass Shower Door (when applicable)	Lumber Core Cabinet Stiles	6 Gallon DSI Gas/Electric Water Heater
TV Antenna and Booster	3 Burner Range	Wallpaper Border
Tub / Shower Surround	Screwed Cabinet Frames	Bedspring
Double Door Refrigerator	Solid Surface Kitchen Countertop	Valances with Curtains
Deep Lipped Overhead Cabinetry	10 Year Cabinet Door Warranty	Water Heater By-pass
Microwave	LP Leak Detector	E-Z Winterizing System
Oven 21"	Steel Ball Bearing Full Extension Drawer Guides	32" Jensen LCD TV
Entertainment Center Cabinet	Carbon Monoxide Detector	

Optional Equipment

Swivel Rocker	10 Gal. Gas/Electric DSI Water Heater	Central Vacuum	Outside Shower
Hide-A-Bed Sofa	MOR-ryde® Extended Pin Box	Fireplace (Available Some Models)	Create-A-Breeze Kitchen/Bathroom
13.5 Ducted A/C in Bedroom	Generator Prep (LP only)	16" Spare Tire and Carrier	12 Volt Power Awning
15.0 Ducted A/C in Bedroom	Kitchen/Bedroom Slide Room Awning	5500 LP Onan® Generator	Ceiling Fan
Fantastic Fan with Rain Sensor	Extreme Weather Package	(3) 40lb. LP Tanks on Slide Tray	Convection Microwave
Aluminum Wheels	King Bed	Wood Look Floor	Washer/Dryer Prep
Slide Room Awning			

* With Extreme Weather Package

For more, see your Bristol Bay dealer for details. Standards, options and specifications are subject to change.



■ This large, solid-surface kitchen countertop along with pull out faucet and a 21" oven and microwave are all standards.

■ Great standards like these swivel rockers, and options like a Hide-a-Bed sofa, central vacuum and much more are available on Bristol Bay.

■ 32" Jensen LCD TV is standard.

C O N S T R U C T I O N



All Aluminum Superstructure!

You'll find more and thicker aluminum posts, crossmembers and roof bows in a Bristol Bay unit. And Bristol Bay's Lite-Aluminum Superstructure is screwed and glued together, not welded. Welds can break with stress. Our bonded and screwed together framing is similar to airplane wing construction. Lighter and stronger!



Much Less Aluminum!

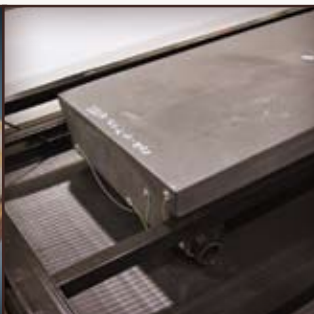
Many of the competitor's brands use thinner posts, much less aluminum and even sidewalls glued to lauan. There is a difference. Look into this before you decide. SunnyBrook RV has always kept the standard high.



■ MOR/ryde® CRE/3000 suspensions offer smoother and easier towing.



■ Real, lumber core cabinet stiles (vs. cheap MDF style stiles) are screwed together to provide the best cabinetry. We also use real poplar hardwood cabinet cleating vs. cheap pine that the competition uses.



■ Heated and enclosed holding tanks (60 gallon fresh!) along with ducted floor heat, and solid steel I-beam frame are first class!



■ Beefy, six-lug hubs and Super Lube axles are standard. A Bristol Bay unit is built better and easier to maintain than others.



■ Your Bristol Bay is built better. R-26 insulation and a full walk-on rubber roof * are more proof. Check out our aluminum superstructure! *With Extreme Weather Package

SPECIFICATIONS

Measurements

	3150 RL	3155 RK	3300 RG	3420 BH	3425 HB	3450 TS	3455 CK	3505 RI	3510 RE	3010 RB	3204 RE	3208 FK
Exterior Length*	32'-7 3/8"	32'-7 3/8"	33'-6"	36'-5"	36'-5"	35'-10"	35'-10"	35'-10"	36'-11"	29'-11"	35'-2"	35'-2"
Exterior Height**	12'-3 1/2"	12'-3 1/2"	12'-3 1/2"	12'-3 1/2"	12'-3 1/2"	12'-3 1/2"	12'-3 1/2"	12'-3 1/2"	12'-3 1/2"	11'-3"	11'-3"	11'-3"
Exterior Width	8'-2 1/2"	8'-2 1/2"	8'-2 1/2"	8'-2 1/2"	8'-2 1/2"	8'-2 1/2"	8'-2 1/2"	8'-2 1/2"	8'-2 1/2"	8'-0"	8'-0"	8'-0"
Interior Height	7'-0"	7'-0"	7'-0"	7'-0"	7'-0"	7'-0"	7'-0"	7'-0"	7'-0"	6'-8"	6'-8"	6'-8"
Hitch Height	48"	48"	48"	48"	48"	48"	48"	48"	48"	22"	22"	22"

Capacities

Dry Hitch Weight/Lbs.***	2211	2280	1772	2440	2221	2500	2357	2421	2255	1119	1036	TBD
Dry Gross Weight/Lbs.***	9497	9911	9050	11103	10923	10888	10597	10777	11425	7952	8597	TBD
GVWR/Lbs.	15000	15000	15000	15000	15000	15000	15000	15000	15000	11700	11700	11700
Fresh Water Cap./Gal.	56	56	56	56	56	56	56	56	56	56	56	56
Black Water Cap./Gal.	33	33	33	33	66	33	33	33	33	33	33	33
Gray Water Cap./Gal.	69	69	69	69	102	69	69	69	69	66	33	69
Sleeping Cap.	4 (6 w/ Option Bd)	4 (6 w/ Option Bd)	8 (6 w/ Option F)	4 (11 w/ Option Bd)	7 (9 w/ Booth Din.)	4 (6 w/ Option Bd)	4 (6 w/ Option Bd)	4 (6 w/ Option Bd)	4 (6 w/ Option Bd)	4 (6 w/ Option Bd)	4 (6 w/ Option Bd)	4 (6 w/ Option Bd)

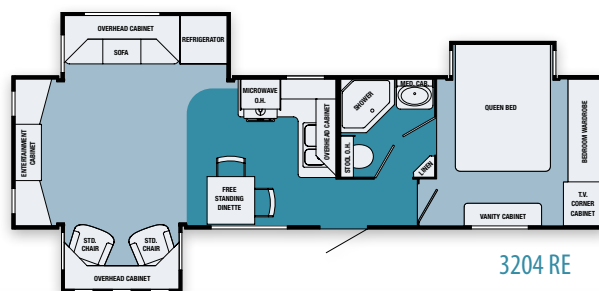
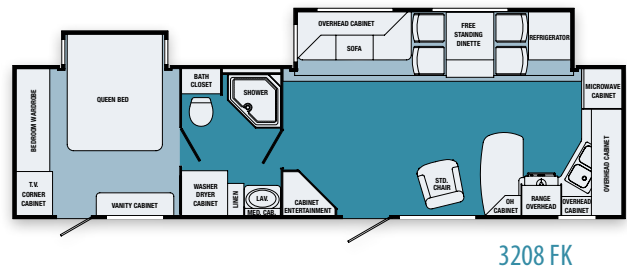
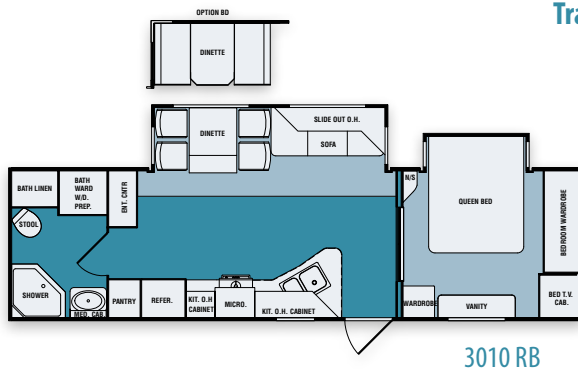
Features

Dual 6000 Lb.	Str. Axles	Str. Axles	Str. Axles	Str. Axles	Str. Axles	Str. Axles	Str. Axles	Str. Axles	Str. Axles	Str. Axles	Str. Axles	Str. Axles
Tire Size	ST235/80R16E	ST235/80R16E	ST235/80R16E	ST235/80R16E	ST235/80R16E	ST235/80R16E	ST235/80R16E	ST235/80R16E	ST235/80R16E	ST235/80R16E	ST235/80R16E	ST235/80R16E
Awning Size	20'	17'	20'	18'	18'	16'	18'	16'	17'	20'	18'	18'
Furnace Size	35M BTU	35M BTU	34M BTU	34M BTU	34M BTU	35M BTU	40M BTU	40M BTU	40M BTU	34M BTU	35M BTU	35M BTU
Dometic Gas/Elec Refrig.	Double Door	Double Door	Double Door	Double Door	Double Door	Double Door	Double Door	Double Door	Double Door	Double Door	Double Door	Double Door

*From center of king pin to rear bumper **Includes AC on roof ***Not including options

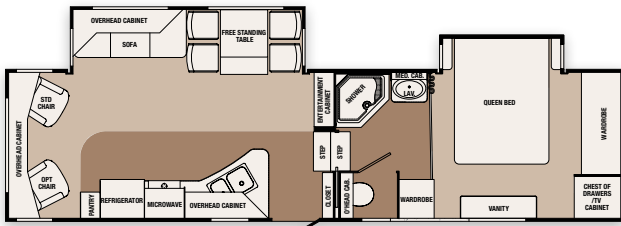
FLOOR PLANS

Travel Trailers

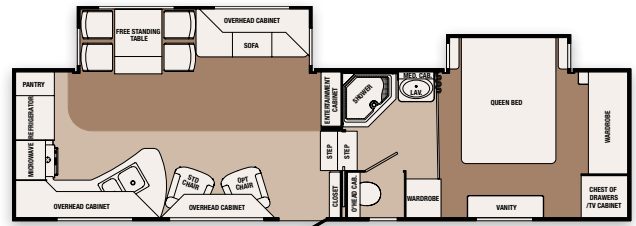


FLOOR PLANS

Fifth Wheels



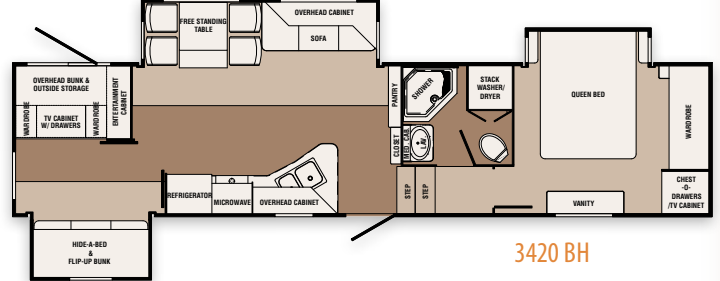
3150 RL



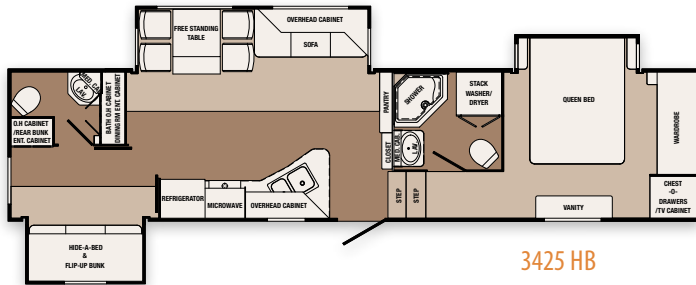
3155 RK



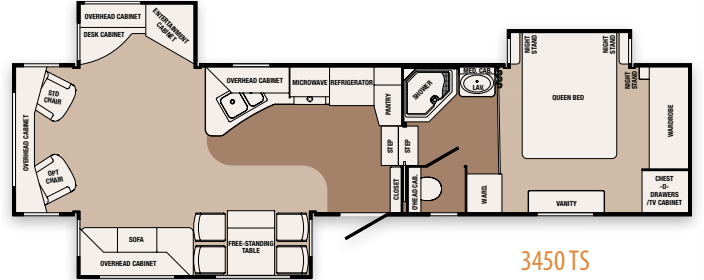
3300 RG



3420 BH



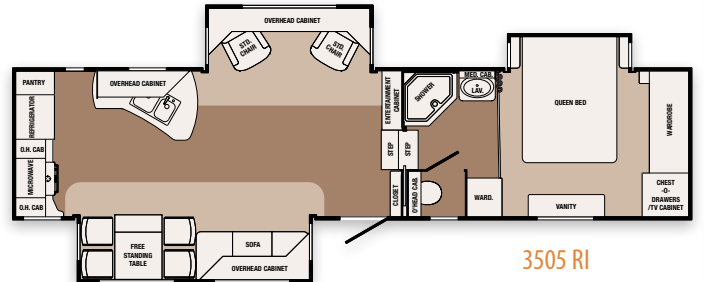
3425 HB



3450 TS



3455 CK



3505 RI



3510 RE

BETTER BY DESIGN

Built Better, Built Stronger

When you choose a Bristol Bay, you're getting an aluminum Superstructure that's stronger, tows easier and will look better than others on the market. You will also get a higher return on your investment than any of the want-to-be aluminum units on the market. SunnyBrook RV sets the standard high. That's why we created and developed this aluminum framed construction. Our ultra-light structure means a smoother ride, less fuel consumption, and a stronger body. Other brands either use minimal aluminum framing or an inexpensive, complete wood structure. Of course, if you look closer, it's easy to see that they use far less aluminum and structural support. SunnyBrook RV pioneered the aluminum Superstructure over 15 years ago, because they care about quality. If you're looking for the best built trailers, see what's under the surface on a Bristol Bay.

Features	BRISTOL BAY	OTHERS
All Aluminum Superstructure	YES	NO
Hi-Gloss Gelcoat Exterior	YES	NO
Dual 30 Lb. LP Tanks	YES	NO
30" Radius Entry Door	YES	NO
True Queen-Size Bed (60" x 80")	YES	NO
Stain-Resistant Fabric	YES	NO
True 5.1 Stereo Surround Sound System	YES	NO
Satellite Prep	YES	NO

Oversized, Solid Surface Kitchen Countertop	YES	NO
Extra Tall Interior Slideout Height	YES	NO
Poplar Hardwood Cleats	YES	NO
Lumber Core Stiles	YES	NO
Steel Bathroom Floor Framing	YES	NO
Pull-Out Faucet at Kitchen Sink	YES	NO
Floor Decking—5/8" Exterior Grade Plywood	YES	NO

* This comparison is to "other" competitors in the same category. Competitive models and features may vary.



BRISTOL BAY
By SunnyBrook

SunnyBrook RV

201 14th Street | Middlebury, IN 46540 | (574) 825-5250

www.sunnybrookrv.com

your SunnyBrook RV Dealer:

Tow Vehicle Disclaimer. CAUTION: Owners of SunnyBrook RV, Inc. recreational vehicles are solely responsible for the selection and proper use of tow vehicles. All customers should consult with a motor vehicle manufacturer or their dealer concerning the purchase and use of suitable tow vehicles for SunnyBrook RV, Inc. products. SunnyBrook RV, Inc. disclaims any liability or damages suffered as a result of the selection, operation, use or misuse of a tow vehicle. SUNNYBROOK RV INC.'S LIMITED WARRANTY DOES NOT COVER DAMAGE TO THE RECREATIONAL VEHICLE OR THE TOW VEHICLE AS A RESULT OF THE SELECTION, OPERATION, USE OR MISUSE OF THE TOW VEHICLE.

All illustrations and specifications contained in this literature are based on the latest product information available at the time of printing. SunnyBrook RV, Inc. reserves the right to make changes to colors, materials, specifications and pricing without notice or obligation. Photography may show optional equipment available at an additional cost. Items used as props in photography are not part of the packages. All liquid capacities and weights are approximate and dimensions are nominal. SunnyBrook reserves the right to make changes and improvements without incorporating these changes into similar models produced at an earlier date. Consult your local, authorized Bristol Bay or SunnyBrook dealer for the latest information and changes. SunnyBrook RV, inc. continues to be a member in good standing of the RVIA.