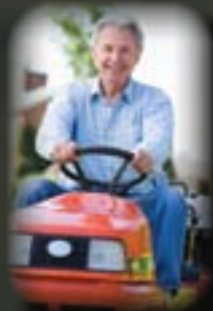


MULTI-LIFESTYLE VEHICLES...





SPACIOUS, LUXURIOUS INTERIORS

CYCLONE toy haulers by Heartland Recreational Vehicles offer four triple slide-out floorplans, each providing the ultimate in interior spaciousness. Choose the optional Amish-crafted all-hardwood cherry cabinets with rich, solid-surface counter tops for a truly luxurious look and feel. The stunning molded slide fascias combine with elegant furnishings including hard sided window valances, night shades and built-in entertainment centers to provide a residential touch rarely found in the toy hauler market.



Model 3850

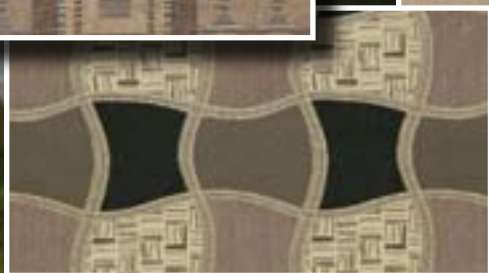
LUXURIOUS DECORS: Choose from four elegant decors featuring durable fabrics on the furnishings and window coverings.



SAND DUNE



STONE MOCHA



DESERT FURY



AUBURN HILL



RESIDENTIAL AMENITIES

Choose CYCLONE for true residential features such as these solid-surface countertops with sink covers and pull-out sprayer faucet in the kitchen.

**HIGH-END FIFTH
WHEEL LUXURY**

While other toy hauler manufacturers have limited many of their interior designs to reflect a purely "racing" lifestyle - CYCLONE has listened to what customers are looking for and are excited to offer the best of both worlds - a coach that may say "Racer" on the outside, but features truly elegant residential form and multi lifestyle function on the inside!



Model 3850



Extra storage is provided by built-in storage drawers in the dinette base.



REMOVABLE DINETTE TABLE

CYCLONE's flexible U-shaped dinette provides a great place to lounge and watch television, or entertain guests with the nice-sized removable table.

The optional **HITCH COVER** provides not only a great look - but improved aerodynamics.





Model 3950

TRULY CREATIVE FLOORPLANS

The CYCLONE 3950 features an exciting new interior concept, as well as an exciting bath and a half design with a bathroom located in the garage area! The kitchen slide-out with island bar provides loads of cabinet and counter top storage space, a large skylight overhead, a conveniently located entertainment center featuring a 32" flat screen TV with easy viewing angles from throughout the coach, and a side-aisle bath design for improved privacy in the bedroom area. Notice the extra windows above the slides which allow natural light to flood this coach, increasing it's already spacious feel.



Model 3950

MULTI-LEVEL BAR WITH STOOLS

The stunning two level bar area in the CYCLONE 3950 offers an excellent place to serve guests or relax with your morning coffee.

TRUE TOY HAULER SPEC'D COACH

Don't settle for lesser quality constructed toy haulers built with lesser quality materials so that they are not rated to hold your toys! Choose CYCLONE for a true 2,500 lb. rated garage with oversize spring-loaded hinged door (no cables)!





**STEEL BALL BEARING
DRAWER GUIDES**

When it comes to smart designs - the CYCLONE leads the way with convenient and helpful concepts like our full-extension steel ball bearing drawer guides. The extra strong drawer guides allow us to offer larger drawers which extend past the cabinet face for maximum usage.



Model 3950



HARDWOOD CABINET DOORS & DRAWERS

Be sure to check when shopping whether other brands have the typical, thin hardwood veneers over chipboard - or real Amish-crafted hardwood doors like CYCLONE. Also, when you choose the Cherry option, you get real solid hardwood cabinet stiles as well!

HALF BATH DESIGN

No longer will you be required to drag mud and dirt through the interior of your coach just to use the restroom! The CYCLONE 3850 & 3950 have an ultra convenient bathroom located right in the garage area!

ROOMY LOFT AREA

The roomy loft area in the 3950 features built-in cabinetry storage as well as TV hook-ups, windows and privacy curtain.



BUILT-IN LADDER

You'll appreciate the hand-crafted, built-in wooden ladder providing easy access to the loft area - much more elegant than a lesser quality removable ladder.



Model 3950



Model 3850 & 3950



ROOMY SLIDE-OUT BEDROOMS

Each CYCLONE toy hauler fifth wheel features a roomy 60" x 80" queen bed slide-out for maximum comfort and spaciousness. As with most luxury fifth wheels, the CYCLONE features two windows in the slide room for maximum cross ventilation, a full-width wardrobe with built-in storage shelves and two reading lights with a convenient wall switch.



SPACIOUS SIDE-AISLE BATHROOM

Choose the CYCLONE fifth wheel for a roomy spacious side-aisle bath design featuring built-in, mirrored, linen closet storage; a large lav base with mirrored medicine cabinet; and solid, one-piece fiberglass shower with glass door enclosure.



LARGE, USABLE WARDROBE AND DRESSER SPACE

You'll love the CYCLONE's full-width front wardrobe with built-in storage that goes into the front cap area, a large six-drawer dresser with stand-up wardrobe, overhead cabinets and room for a flat screen TV overhead.

FUNCTIONAL LIVING SPACE

The CYCLONE 3010 offers a very large living room with great viewing angles of the entertainment center equipped with a high definition 32" LCD flat screen TV on an adjustable swing out mount. Shown here the cherry wood interior, featuring Amish-crafted hardwood doors and drawers; solid-surface counter tops; designer window valances with hard sides; night shades and over-sized picture windows for a great view of your surroundings. The dinette table is removable for kicking back and relaxing on the comfortable sofa. The Sofa also converts to an extra sleeping area and has built in storage drawers below for linens, pillows and other items



Model 3010



Model 3850

SPACIOUS LIVING AND WORKING AREAS

Each CYCLONE toy hauler features open concept living areas and highly efficient workplaces for serving and preparing meals with loads of base and overhead cabinets. Overhead windows let in natural light and plenty of lighting fixtures allow you to task light or set the mood for a quiet dinner together.





GREAT FEATURES MAKE THE CYCLONE A GREAT COACH!

- A) Optional 9.0 cu ft Refrigerator located in the garage area.
- B) Standard pedestal table with optional rear convertible sofa/beds.
- C) Standard washer / dryer prep - In Bedroom Wardrobe
- D) Standard Recessed Beaver Tail Storage Boxes



BUILT-IN BEAVER-TAIL STORAGE BOXES

Choose CYCLONE for the most convenient storage possibilities complete with no-slip textured coating and easy grab latch.



ANOTHER CYCLONE FIRST - MOLDED REAR SPOILER

Cyclone adds sleek style and aerodynamics with a one piece molded fiberglass rear spoiler featuring built-in LED marker lights and high intensity loading lights positioned for maximum visibility. (N/A 3010)



ANOTHER HEARTLAND INNOVATION - UNIVERSAL DOCKING CENTER

CYCLONE features Heartland's famous UDC where all of the coaches system hook-ups have been engineered into one easy-to-access, lighted and concealed compartment.



UNINHIBITED PASS-THRU EXTERIOR STORAGE

Choose CYCLONE for superior industry leading engineering which results in larger, cleaner pass-through storage possibilities.



BUILT-IN DIAMOND PLATE TOOLBOX

Convenient location and sturdy construction keep your tools close at hand, organized and protected.





BUILT-IN OUTDOOR SPEAKERS
 CYCLONE owners can enjoy listening to their favorite CDs, catch up on the news, or listen to the big game on these powerful outdoor speakers, conveniently located patio side and easily controlled by the entertainment center receiver.



LED TAILLIGHTS, HITCH-UP and MARKER LIGHTS -- You will spend less time fixing burned out bulbs with these Longer lasting, Brighter and Very Stylish LED lights that keep you seen on the road and assist you during hitch-up and maneuvering.



30 GALLONS of FUEL on the GO
 CYCLONE owners Enjoy Safely Transporting Fuel in a Fuel Cell rather than having several 5 gallon fuel cans that take up floor space and can spill if not secured properly. A convenient filling hose and valve handle like you would find at the gas station for filling your toys and the Static Line (***Metallic cable and clip that connects the toy and trailer together***) that reduces the risk of static electricity sparks that are known to cause explosions!



RADIUS ENTRY STEPS:
 These steps provide a safe entry into your CYCLONE. The radius front edge virtually eliminates the sharp corners of traditional steps and gives you more step tread for added safety entering and exiting your CYCLONE.



OPTIONAL PATIO SLIDER DOOR with VERTICAL PRIVACY BLINDS
 Achieve the ultimate in open concept living with our optional sliding glass patio door separating the garage from the living quarters. When your set up at camp and the toys are outside why not expand the living area to the garage. The tailgate ramp door can also be opened and an optional rear pull down screen can turn your garage into an enclosed screen room.



UNDER-FRAME, PULL-OUT STORAGE BINS
 100 lb capacity, outdoor storage compartments made of heavy duty easy to clean plastic are perfect for storing your messy outdoor gear you don't want indoors.



50 Amp MARINE GRADE SERVICE
 Enjoy a more sophisticated method of powering your coach with less hassle, easy to store detachable cord, increased power and no opening in the sidewall to let in unwanted bugs or moisture - 50 Amp Service is both a Convenience and a Value that our Customers Deserve!



Heartland's optional ToyLok is perfect for quickly and easily securing bikes, grills, furniture and anything else that needs to be secured when you leave your site unattended.

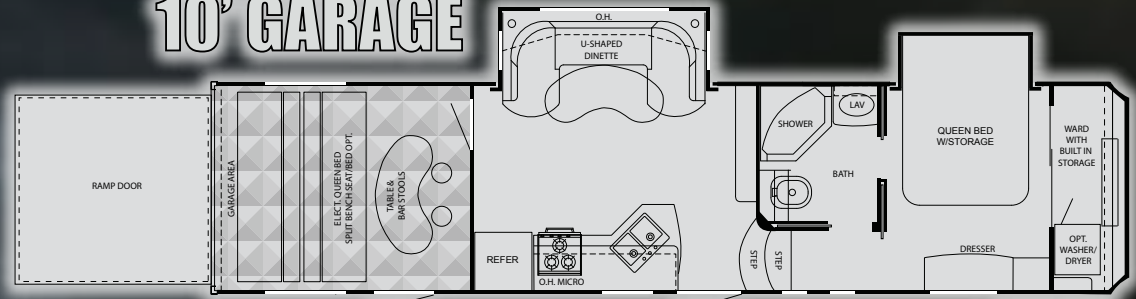


OPTIONAL ELECTRIC REAR STABILIZER JACKS - ONE TOUCH ACTIVATION.
 Your time and energy are valuable, especially on vacation! Don't waste time either fiddling around with awkward crank handles trying to crank down some antiquated jack system. Choose CYCLONE for the ease of Electric Rear Jacks!



MULTI-LIFESTYLE VEHICLES...

10' GARAGE

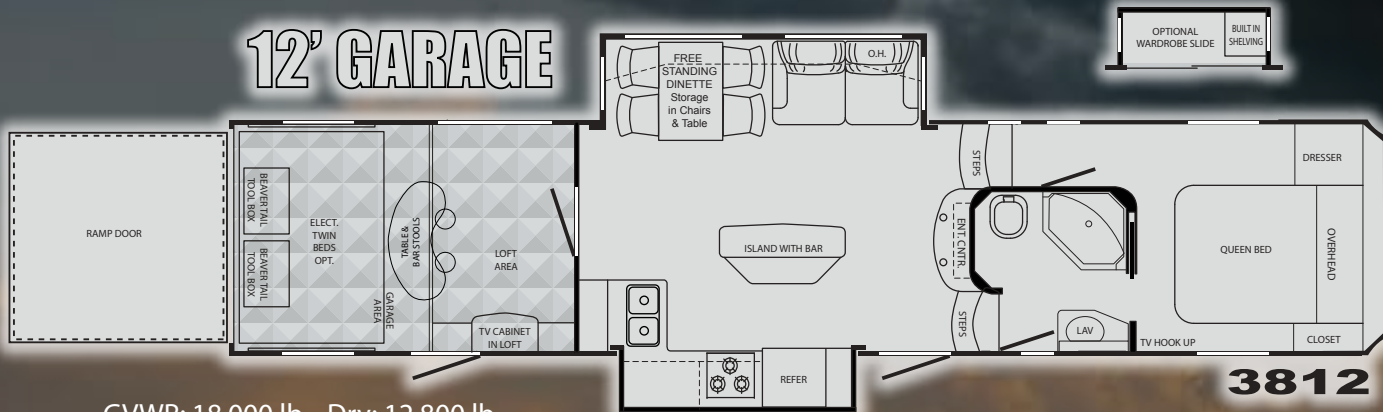


3010

I ONLY WEIGH 11,525 lb

GVWR: 14,000 lb. Dry: 11,525 lb.
Hitch: 2,530 lb. Length: 35'-2"

12' GARAGE



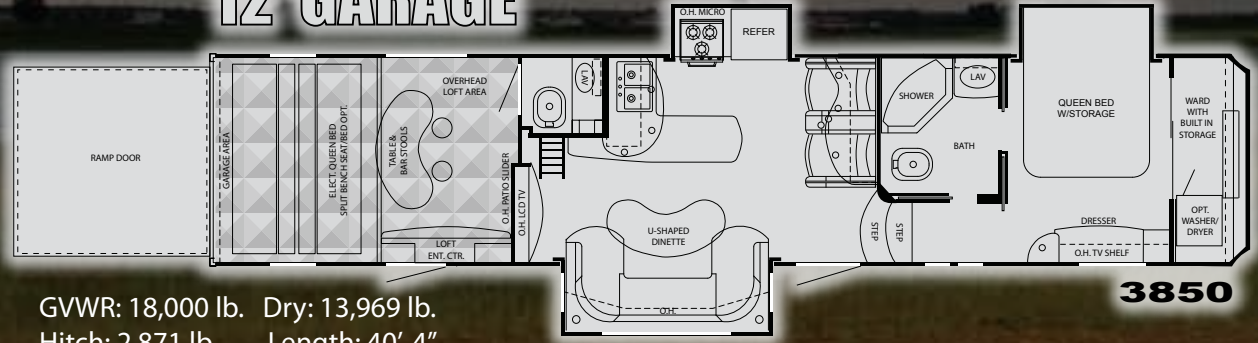
3812

GVWR: 18,000 lb. Dry: 12,800 lb.
Hitch: 3,050 lb. Length: 39'-11"

LUXURIOUS INTERIORS!

Featuring Hardwood Cabinetry; U-Shaped Dinettes; available Solid-Surface Countertops; and Bedroom Slides!

12' GARAGE

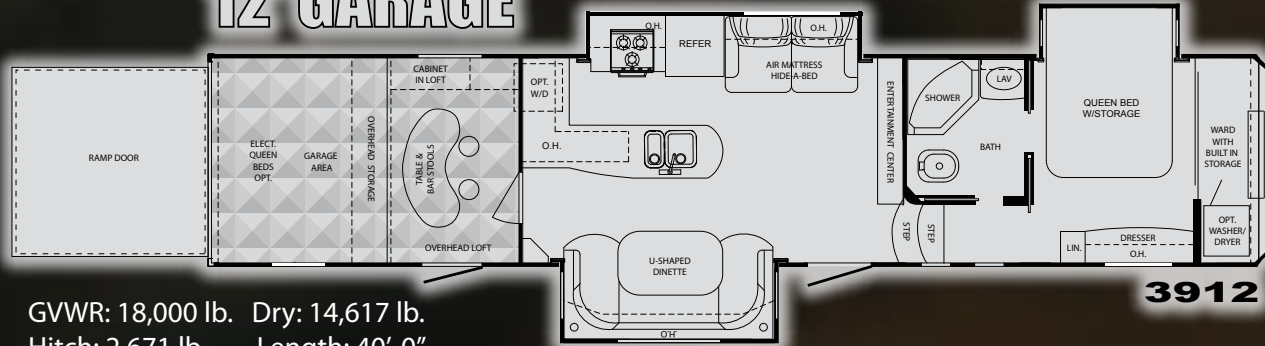


3850

GVWR: 18,000 lb. Dry: 13,969 lb.
Hitch: 2,871 lb. Length: 40'-4"



12' GARAGE

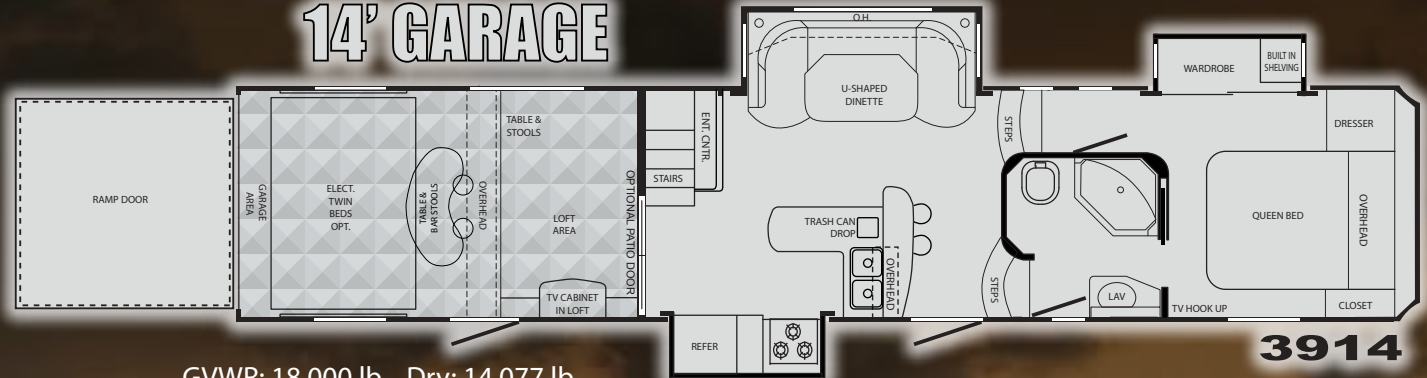


GVWR: 18,000 lb. Dry: 14,617 lb.
Hitch: 2,671 lb. Length: 40'-0"

3912



14' GARAGE



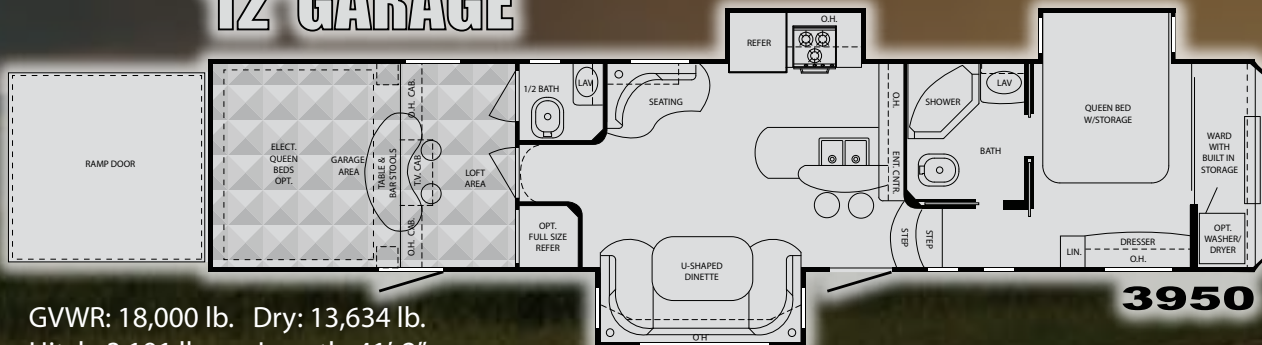
GVWR: 18,000 lb. Dry: 14,077 lb.
Hitch: 2,811 lb. Length: 41'-10"

3914

**FULL EXTENSION
BALL-BEARING
DRAWER GUIDES!**

*Stronger, Larger
Drawers!*

12' GARAGE



GVWR: 18,000 lb. Dry: 13,634 lb.
Hitch: 3,191 lb. Length: 41'-2"

3950

*Optional CHERRY
HARDWOOD
CABINETRY!
Including Doors,
Drawers and Stiles!*



Note: Over All Length defined as tow point (Ball coupler for travel trailers / King pin for 5th wheel trailers) to rear bumper. It does not include the rear ladder. Add 9" w/ Extended Pin Box

STANDARDS & OPTIONS

KITCHEN / INTERIOR

- Raised Panel Solid Hardwood Cabinetry
- Steel Ball-Bearing Drawer Guides
- Large Pantry (most models)
- Large Cabinet Storage
- Detachable Sprayer Faucet
- Deep Stainless Steel Kitchen Sink
- Microwave Oven Half Time Convection
- Range Covers
- Cable TV/Satellite Hook-Ups in Living Room Bedroom, Loft and Garage
- Custom Control Panel
- 15,000 BTU Air Conditioner with Quick Cool
- Wired & Framed for 2nd A/C (N/A 3010)
- Multi-Zone Entertainment System
 - JENSEN™ JenX Amp; JenX Ceiling Speakers; JenX Marine Grade Exterior Speakers; JenX Sub-Woofer; DVD Player with Front A/V Jacks; MP3; MP4; iPod Station; Bass Control; Rear A/V Input;
- 32" Flat Screen TV with Swing Arm (all models)
- Air Vent in Loft
- His/Her's Reading Lights in Loft
- Overhead Cabinets or Shelving Throughout
- Deluxe Hide-a-Bed Sofa w/Inflatable Air Mattress (some models)
- Countertop Extension (3010)
- Fantastic Fan with Rain Sensor in Kitchen with Thermostat

BATH & BED

- Single Level Master Suite
- Neo-Angle Shower (1-Piece Fiberglass in all models)
- Separate Commode Room
- Foot Flush Porcelain Commode
- Heat and A/C Vents in Main Bathroom
- Queen Bed in Loft w/Shelving & TV Hookup
- Huge Front Wardrobe
- Recessed Front Cap Storage in Wardrobe
- Large Vanity Drawers
- Skylight Over Shower
- Power Bath Vent
- Washer Dryer Prep in Front Wardrobe (3914 in Garage) (N/A 3812)

EXTERIOR

- Rear Fiberglass Upper Spoiler (N/A 3010)
- Hydraulic Slide-Outs with Slideout Selector Valves
- 16" Tires w/Aluminum Wheels

- One-Piece Walk-On Rubber Roof
- Welded Tubular Aluminum Construction
- Stunning Exterior Graphics
- 12" I-Beam Powder Coated Steel Frame (10" I-Beam 3010)
- Heated and Enclosed Underbelly
- Triple 6,000 lb. Axles w/Adjustable Shackles (3010 - Two 7,000 lb. Axles)
- E-Z Lube Hubs
- Large, Unobstructed Pass-Through Storage
- Built-In Diamond Plate Tool Box
- Universal Docking Center (All System Hook-Ups Located In One, Convenient, Concealed Compartment)
- Elect. Front Stabilizer Jacks
- Easy Grip Steps
- Entry Assist Handle
- Static Line (w/Fuel Station)
- 80 Amp Power Converter
- 50 Amp Service with Detachable Cord
- Hi-Flow Water Pump
- Radius, Mirrored Safety Glass Windows (Solar Reflective)
- Radius, 1" Thick Baggage Doors
- Rain Gutters w/Spouts
- Detachable Ladder
- Side Scare Lights
- Rear Flood Lights
- Exterior Hot/Cold Shower with High Pressure Nozzle
- Dual 30 lb. LP Tanks
- Auto Transfer Switch
- Wide Body Design
- Huge 94" Wide Door Opening
- Enclosed Gooseneck
- Generator Prep with Fuel Station and Timer
- Under-frame, Pull-Out Storage Bins (100 lb. Capacity Each)

GARAGE AREA

- 1" Thick Plywood Garage Floor
- Steel D-Ring Tie Downs
- 3000 lb. Rated Ultra-Light Ramp Door (No Cables)
- 10', 12' and 14' Garage Layouts
- Overhead Storage in Garage (N/A w/Elect. Beds)
- Gen. Prep w/Fuel Station & Timer
- Large 8' Garage Door Ramp (3010 - 7' Garage Door Ramp)
- Fantastic Fan with Rain Sensor & Thermostat
- Recessed Hidden Beaver-Tail Storage

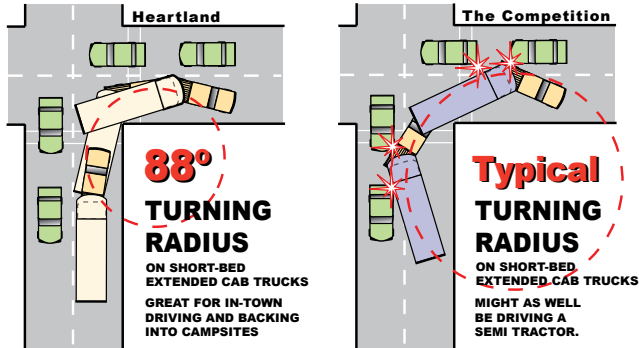
OPTIONS

- Power Electric Awning
- 2nd Power Elect. Awning (3950, 3850, 3914 & 3812)
- Solid Hardwood Cabinetry w/Cherry Stain
- Solid Surface Countertops
- High Gloss Fiberglass Exterior Sidewalls
- Free Standing Dinette w/4 Chairs (where available)
- Patio Sliding Door (3010, 3850, 3914 & 3812)
- Fantastic Vent w/Rain Sensor (where available)
- Removable Edged Cargo Carpet
- Central Vacuum System
- Double Electric Queen Beds with rear convertible sofa
- Pull Down Rear Screen
- 9 Cu. Ft. Refrigerator in Garage (3950 only)
- 12 Cu. Ft. Refrigerator with Icemaker (3812 only)
- 5.5 KW Generator
- 5.5 KW Generator (CARB Certified)
- Security Camera with
 - 19" Color LCD T.V. / Monitor in Bedroom
- Washer/Dryer (where available)
- Electric Rear Jacks
- Full Throttle Graphics Package (Blue / Silver)
- 15,000 BTU Air Conditioner Heat Pump
- Second 13,500 BTU Air Conditioner in Bedroom (N/A 3010)
- ABS Hitch Cover (5th wheel models)
- Electric Ramp Door Assist
- ToyLok
- Dual Pane Windows
- Mini Refrigerator (3850, 3912, 3914, 3950) (3914 W/D N/A with Mini Refrigerator)



SUPERIOR CONSTRUCTION AND DESIGN TRANSLATE INTO A SUPERIOR VALUE!

**ACHIEVE AN 88° TURN!
IN A SHORT-BED, EXTENDED CAB TRUCK
ONLY IN A HEARTLAND!**



PATENT PENDING!

**DON'T ACCEPT ANY IMITATIONS - IF YOU
CAN'T TURN 88° IT'S NOT A HEARTLAND!**

ZERO° TESTED!

Heartland 5th wheel Construction has been subjected to rigid testing in the famous DOMETIC™ extreme temperature testing chamber where it passed with flying colors! The chamber is set to 0° to test the unit's heating efficiency, followed by being set at 100° to test its cooling efficiency. With our thick 2" laminated walls; enclosed and heated underbelly; and insulated floor - the interior of the Heartland coach remained warm and comfy during the sub-freezing test and nice and cool during the heat test!



For more details, visit our web site:
www.HEARTLANDRVs.com

HEARTLAND
MOBILE STORAGE TRAILERS, LLC

**2" THICK
SIDEWALLS!**

**Lightweight
ALUMINUM**

Just an 1/8" thick foam cup protects your hand from scalding hot coffee... imagine what nearly 2" of block foam does for your Laminated Heartland Sidewall!

Double Welded, Fully Laminated
Sidewall Construction



Yet another CYCLONE smart design - the air-mattress hide-a-bed sofa offers the ultimate in comfort, as well as a deep drawer that is perfect for storing throw blankets and other items.



Heartland Recreational Vehicles
1001 All-Pro Drive • Elkhart, IN 46514 • 574-262-5992

Community. Convenience. Close-to-home.

Where you purchase your recreational vehicle is ultimately your decision but Heartland urges you to consider buying at your local dealer. Dealers are part of your community, providing jobs and contributing to your local economy. These dealers are under obligation to provide warranty service for products they sell, but are not legally required to service products purchased from other dealers. At some point, you may need to return to the dealer you buy from - why not stay close to home? After all, home is where your Heartland is!

BENEFITS OF PURCHASING YOUR RV LOCALLY:

- You enjoy valuable relationship building with Dealer Representatives, close to your home, who will explain the features and benefits of the product.
- You receive a full product orientation prior to delivery, which includes hands-on directions for many of the coach's systems and functions. You are also introduced to the Dealership's Service/Parts/Warranty personnel who are at the ready to help you with any issues you may encounter, now and in the future.
- You enjoy customer PRIORITY. Dealerships generally service their purchasing customers first - others may experience long delays and miss opportunities to use their RV. What is it worth for you to have a dealership's full attention and motivation to satisfy you when you need service - in a timely manner?
- Valuable TAX dollars and jobs stay in YOUR community which pays for your roads, schools, police and fire departments.

DON'T UNDERESTIMATE CUSTOMER SERVICE AND PERSONAL CARE!

For Canadian Residents: If you purchase an RV out-of-country, there are additional fees, taxes and inspections that must be met before bringing your product home. Your local Canadian dealers are experts in these provisions.

Your Authorized Heartland Dealer:

www.HEARTLANDRVS.com

Experience:
Product Walk-Through Videos
Side By Side Comparisons
Feature Videos • Photo Galleries
Virtual 360° Tours
Detailed Floor Plans
News • Testimonials
Customer Service
Service Locator
Owners Club • More
at our Informative Web Site

VENDOR	800#
CALL DIRECT FOR DIRECT RESULTS!	
TOLL FREE & WARRANTY PHONE NUMBERS:	
<small>Check the VIN on the front of your coach to determine the correct vendor. Check the VIN label on the product to determine the correct vendor.</small>	
LIPPERT	1.866.524.7921
DOMETIC	1.800.544.6881
NORCO	1.800.347.2232
SHUR-FLOW	1.800.854.3218
THE FORD	1.800.543.1219
KIB	1.800.250.7051
TREDIT TIRE	1.800.537.2925
A.S.A.	1.800.688.3135
PROGRESSIVE	1.269.781.4241
CHENG	1.877.294.8997
ATWOOD	1.866.869.3118
SUBURBAN	1.423.775.2131
SWAN	1.800.228.7926
B & B	1.574.259.7838

Call Direct, Fast Results! 800# LABEL IN EVERY HEARTLAND

We provide a convenient sticker in each coach listing the warranty phone numbers of our most common vendor partners so that if you choose to, you may work directly with them to more quickly resolve issues or obtain replacement items.



HEARTLAND CUSTOMER SERVICE

WE'VE GOT YOUR BACK!

Over 40 men and women located in a dedicated facility servicing our customers every day. With a dealer network of over 400 locations across the U.S. and Canada, you're never far from an authorized Heartland dealer.

Product information is as accurate as possible as of the date of publication of this brochure. Due to Heartland's commitment to continuous product improvement - floorplans, materials, components, features, specifications, options, etc. are subject to change without notice or obligation to Heartland Recreational Vehicles. 2010 model year CYCLONE specifications apply to coaches with VIN numbers ending with 205216 and higher.

Tow Vehicle Caution: Owners of Heartland recreational vehicles are solely responsible for the selection and proper use of tow vehicles. All customers should consult with a motor vehicle manufacturer or their dealer concerning the purchase and use of suitable tow vehicles for Heartland products. Heartland disclaims any liability or damages suffered as a result of the selection, operation, use or misuse of a tow vehicle. Heartland's limited warranty does not cover damage to the recreational vehicle or the tow vehicle as a result of the selection of the tow vehicle.

See your nearest Heartland dealer to review a current model. 60,000 LITHO 3/09