

2009 DENALI
TRAVEL TRAILERS & FIFTH WHEELS

DENALI



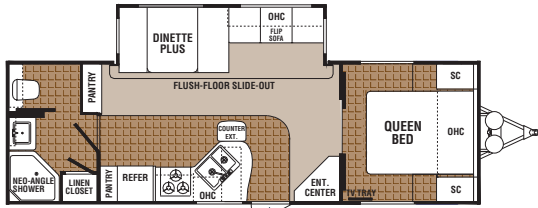
FEATURING SUPER-LITE
TRAVEL TRAILERS & FIFTH WHEELS



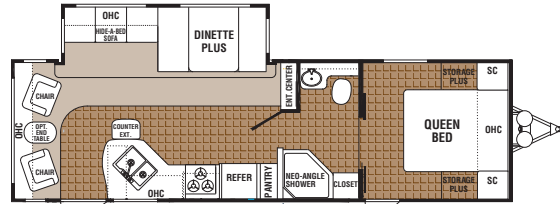
INTRODUCING DENALI SUPER-LITE

Introducing the new Denali Super-Lite travel trailer and fifth wheel product line. Denali Super-Lites feature a 6-way welded aluminum cage super-structure with lightweight laminated floor and walls. Denali Super-Lites include the top premium features of our traditional Denali product line while saving weight and increasing your fuel economy. Denali Super-Lites average 400 to 800 pounds lighter than previous models! These models are 1/2 ton towable - perfect for today's market!

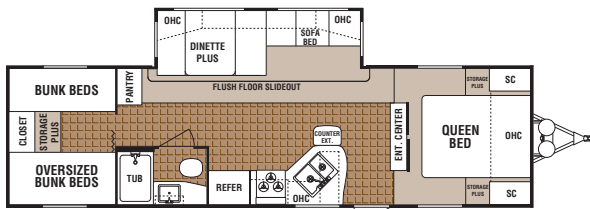
SUPER-LITE TRAVEL TRAILERS



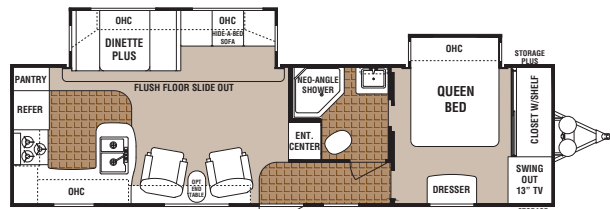
260FBX-DSL **1/2 TON TOWABLE**



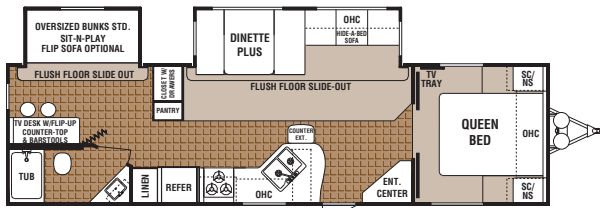
270RLX-DSL **1/2 TON TOWABLE**



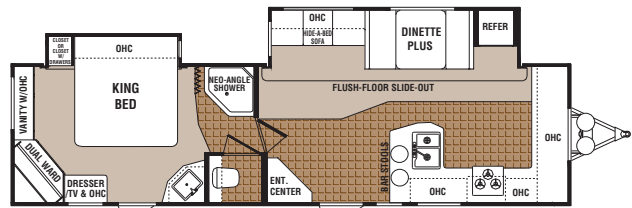
290BHX-DSL **1/2 TON TOWABLE**



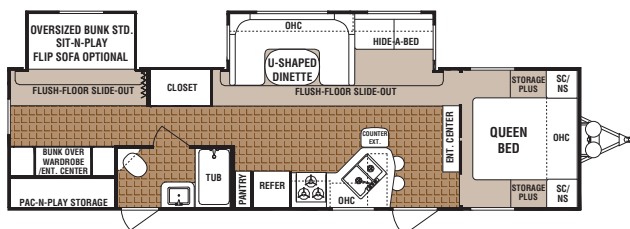
292RKS-DSL **1/2 TON TOWABLE**



300BHX-DSL

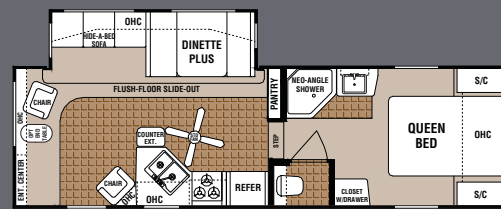


310FGX-DSL



312BHX-DSL

SUPER-LITE FIFTH WHEEL



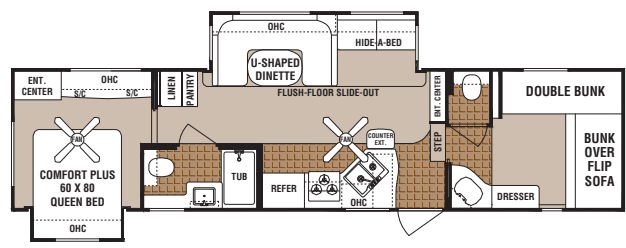
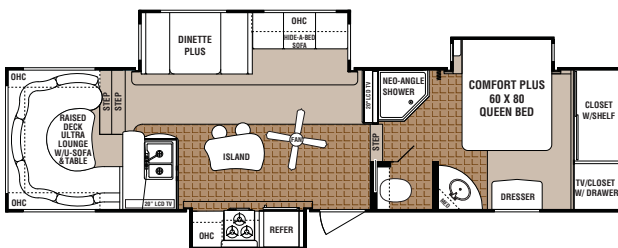
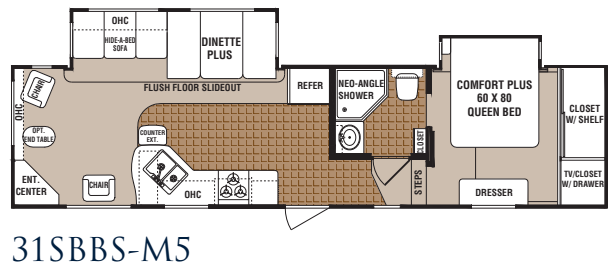
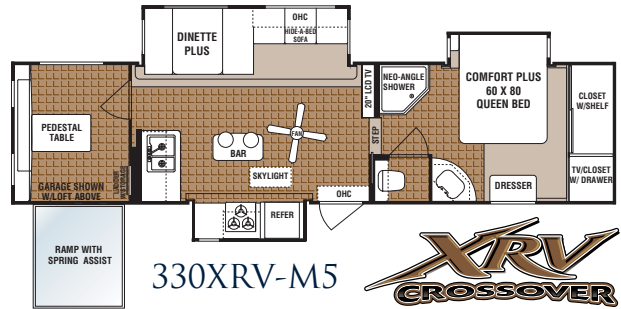
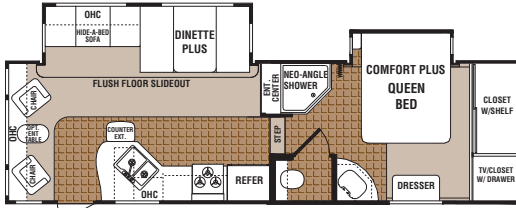
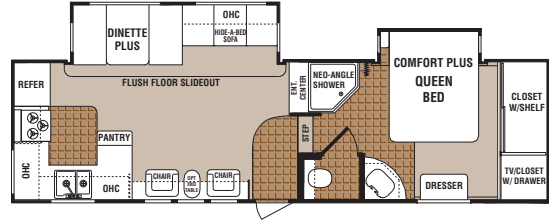
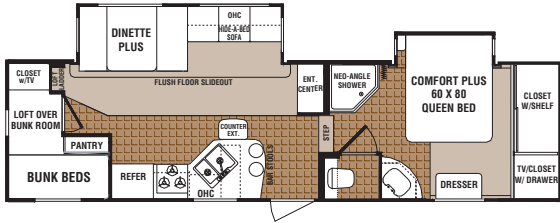
259REX-M5 **1/2 TON TOWABLE**

SUPER-LITE FEATURES

- All Denali Travel Trailers Now Feature Super-Lite Construction
- 6-Sided Welded Aluminum-Framed Walls, Floor and Roof
- 5 Way Laminated - Walls and Floor
- Gel Coated Filon Fiberglass Walls
- Aluminum Roof Trusses
- Extreme Insulation Package with R14 Roof Insulation and Heated Enclosed Underbelly
- One-Piece Seamless, Walk-On Rubber Roof

- Aluminum Diamond Plate Rock Guard (TT)
- Oil-Rubbed Bronze Hardware & Sconce Light
- 40" Deep slide rooms
- Solid Wood, Raised Panel Cabinet Doors
- Premium Furniture Package
- Skylight in Bath
- Night Shades
- Premium Jensen Entertainment Center

DENALI FIFTH WHEELS



UPGRADE YOUR DENALI WITH THE LUXURY CAMPING PACKAGE
Packaged together at one great price

- Power stabilizer jacks
- Equa Flex suspension
- Chrome bumper cover
- Deluxe entry assist handle
- Aluminum rims
- Central vacuum system
- Convection microwave
- Pillow top mattress
- 8 Cu. Ft. Refrigerator
- 19.7 Gallon per hour gas/electric water heater with DSI
- Hitch Helper system
- Thule "Smart RV" system

WEIGHTS & SPECIFICATIONS

	Floorplan	Base Weight	Hitch Dry Weight	Cargo Capacity	Exterior Length	Exterior Height w/AC	Fresh Water Capacity (Gal.)	Grey Water Capacity (Gal.)	Black Water Capacity (Gal.)	Furnace Size (BTU's)
Super-Lite Travel Trailers	260FBX-DSL*	6133	805	1857	29' 9"	10' 11"	46	42	42	30,000
	270RLX-DSL*	6636	775	1354	31' 2"	10' 11"	46	42	42	30,000
	290BHX-DSL*	6729	1016	2951	32' 7"	10' 11"	46	42	42	30,000
	292RXX-DSL*	7337	950	3839	34' 1"	10' 11"	46	42/42	42	34,000
	300BHX-DSL					10' 11"	46	42/42	42	34,000
	310FGX-DSL					10' 11"	46	42/42	42	34,000
	312BHX-DSL					10' 11"	46	42/42	42	34,000
Super-Lite Fifth Wheel	259REX-M5*	7056	1362	3505	28' 6"	11' 4"	46	42	42	30,000
Denali Fifth Wheels	28LBBS-M5	8654	1840	1906	33' 6"	12'	46	42/42	42	30,000
	28RKBS-M5	8237	1618	2323	32' 7"	12' 6"	46	42/42	42	34,000
	28RLBS-M5	8151	1709	2409	31' 2"	12' 6"	46	42/42	42	34,000
	31RGSB-M5	9255	1752	2937	34' 7"	12' 6"	46	42/42	42	34,000
	31SBBS-M5	8835	2094	3357	35' 2"	12' 6"	46	42/42	42	34,000
	326QB-M5	9216	2040	2976	36'	12' 6"	46	42/42	42	34,000
	330XRV-M5	10,043	2221	3357	35' 8"	13' 2"	46	42/42	42	34,000
	331RS-M5	9810	2200	2382	35' 7"	13' 2"	46	42/42	42	34,000

* Half-Ton Towable

*Consult your vehicle owner's manual for maximum towing capacity before purchasing a recreation vehicle.

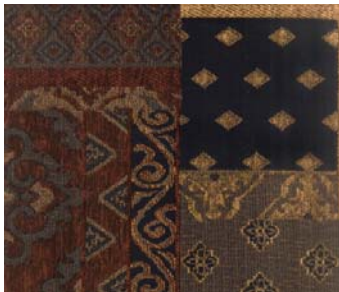
Vehicle loading - Every effort has been made to provide the greatest number of options for the recreational vehicle owner. Along with these choices comes the responsibility to manage the loads that are imposed by the choices that they remain within the manufacturer's specified chassis weight limits. Do not overload the recreational vehicle. Dry weight is the weight of the unit with standard run features. Some optional equipment not included. Net carrying capacity (NCC) is determined by subtracting unloaded vehicle weight (UUV) from gross vehicle weight (GVWR) and includes fluids, options and cargo. Liquid capacities and weights are approximations only.

Warning - This information is intended as a guide only. Weights of individual vehicles may vary. Consult your owner's manual for complete loading, weighing and towing instructions.

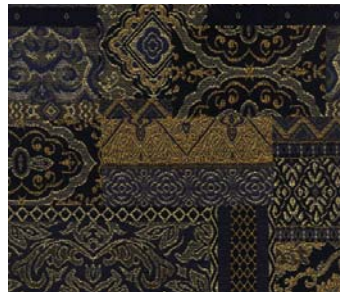
Vehicles are designed for recreational use only and not intended for use as a primary residence.

Product information, specifications, and photography in this brochure were as accurate as possible at time of printing. Photographs may contain some features that are optional on your vehicle. Since we continually strive to improve our products, actual products may differ. Prices and specifications are subject to change without notice. All capacities are approximate and dimensions are nominal. Some features shown are optional and may be different or unavailable in Canada. All logos and brand names shown in this brochure are registered trademarks of Dutchmen Mfg, Inc.

DENALI DECORS



YAHTZEE MAHOGANY



JEMBARAN MIDNIGHT



NIRVELLI CHESTNUT



YALENA RAISIN

VISIT US ON THE WEB FOR:

- New Floorplans
- Product Photos
- Detailed Specifications
- Decor Colors

www.DENALI-RV.com

WWW.DENALI-RV.COM

Dutchmen Manufacturing, Inc.

A division of Thor Industries

2164 Caragana Court · Goshen, IN 46526

Sales: 574.534.1224 · Fax: 574.975.0592

YOUR LOCAL DEALER