

YOUR TICKET FOR FIRST CLASS CAMPING
SEE AMERICA IN A HERITAGE GLEN

START A FAMILY HERITAGE IN A HERITAGE GLEN!



COMFORT



CONVENIENCE



MODEL



MODEL



246RLBS



256BHS



VACUUM-BONDED ALUMA FRAME LUXURY
TRAILERS AND FIFTH WHEELS.

**WILDWOOD HERITAGE GLEN
TRAVEL TRAILERS**

FIRST CLASS CAMPING



312QBUD



312QBUD SHOWN WITH
OPTIONAL CREME OVERHEADS AND
OPTIONAL CERAMIC TILE LINOLEUM



312QBUD SHOWN WITH TRUNDLE
MATTRESS UNDER BOTTOM BUNK
AND OPTIONAL CERAMIC TILE LINOLEUM

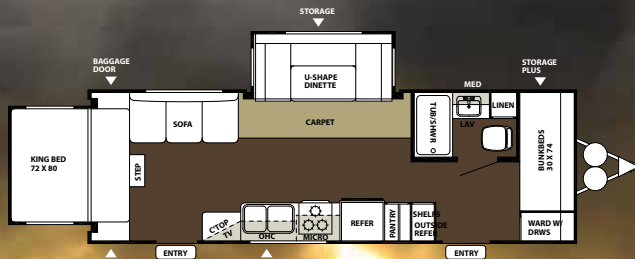


312QBUD SHOWN WITH BASIL INTERIOR AND OPTIONAL CERAMIC TILE LINOLEUM

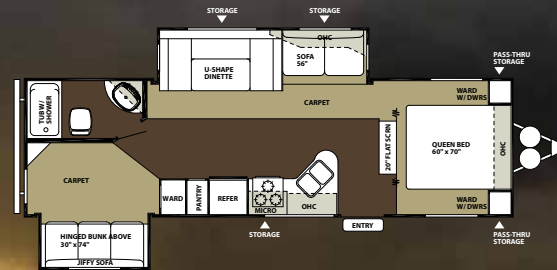


312QBUD BASIL

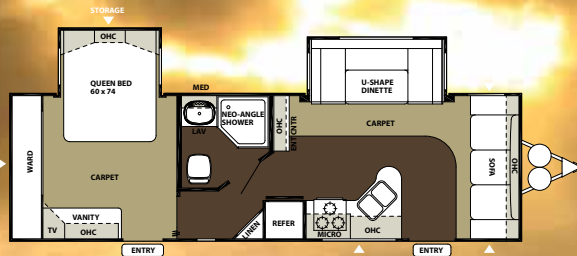
This living room is warm and inviting and filled with great features. The well appointed room above is shown with the Cappuccino fabric and Vigor Cherry interior. The Creme overhead cabinets are a popular option. Stainless steel appliances, DLX range cover, standard TV and E-Stone countertops are just a few of the standard features that you will find in the Heritage Glen.



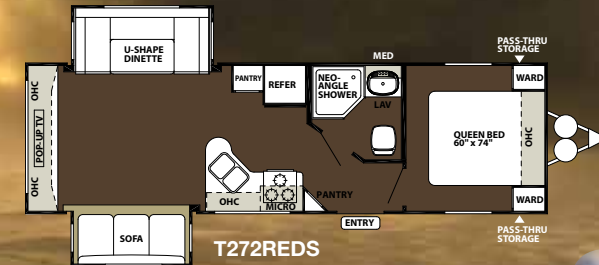
T256BHS



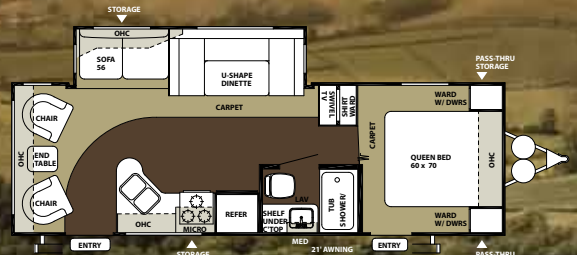
T282BHBS



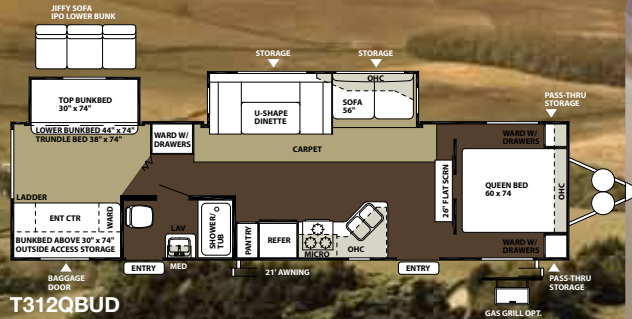
T262FL



T272REDS



T262RL



T312QBUD

312QBUD CONVENIENCE

The Heritage Glen Travel Trailer is all about convenience. Four out of six models include two entry doors to facilitate usage. Our payloads are the best in the business and we maximize storage in every possible place. It all adds up to making sure the trailer is easy to pull and you are well accommodated for all of your camping needs.



SPECIFICATIONS	256BHS	262FL	262RL	282BHBS	272REDS	312QBUD
HITCH WEIGHT lb	765	885	540	660	TBA	855
AXLE WEIGHT	5085	5550	5285	6520	TBA	5980
DRY SHIP WEIGHT	5850	6435	5825	7180	TBA	6840
G.V.W.R	7765	7885	7540	10820	TBA	9500
CCC cargo capacity	1885	1390	1655	3580	TBA	2600
EXT LENGTH	29' 0"	31' 2"	29' 0"	31' 8"	TBA	35' 10"
EXT HEIGHT	TBA	TBA	TBA	TBA	TBA	TBA
INT HEIGHT	78"	78"	78"	78"	TBA	78"
FRESH WATER CAP gal	32	32	32	32	TBA	42
BLACK WATER CAP gal	32	32	32	32	TBA	32
GREY WATER CAP gal	32	32	32	32	TBA	32
TIRE SIZE in	15"	15"	15"	15"	TBA	15"
AWNING SIZE ft	21'	21'	21'	16'	TBA	18'

**WILDWOOD HERITAGE GLEN
FIFTH WHEELS**

FIRST CLASS CAMPING

246RLBS



246RLBS SHOWN WITH OPTIONAL CERAMIC TILE LINOLEUM



246RLBS SHOWN WITH OPTIONAL CERAMIC TILE LINOLEUM

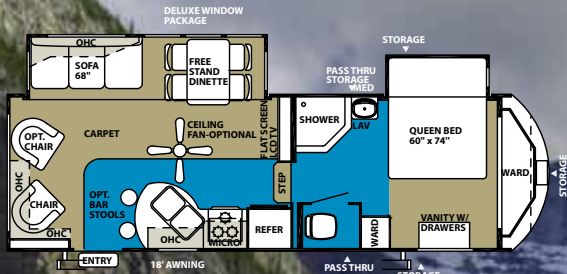


246RLBS SHOWN IN CAPPUCCINO WITH OPTIONAL CERAMIC TILE LINOLEUM

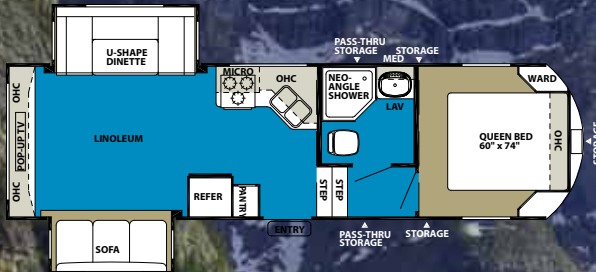


246RLBS QUALITY WITHIN

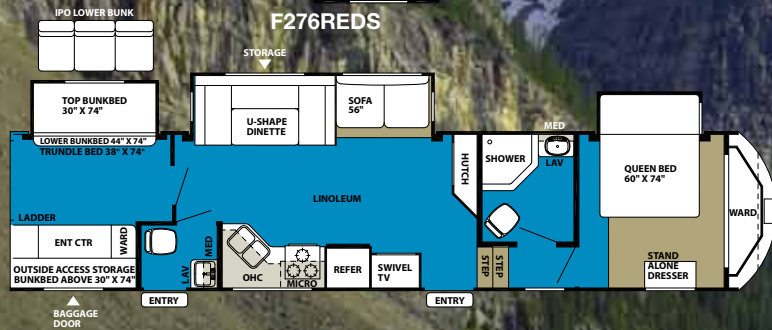
Comfort and style combine flawlessly in the Heritage Glen fifth wheel. With everything from the look of the professionally designed fabrics to the attention to detail in the well crafted crown molding slide out facia, Wildwood has left nothing out when it comes to quality. You can rest assured that your next camping experience will be first class.



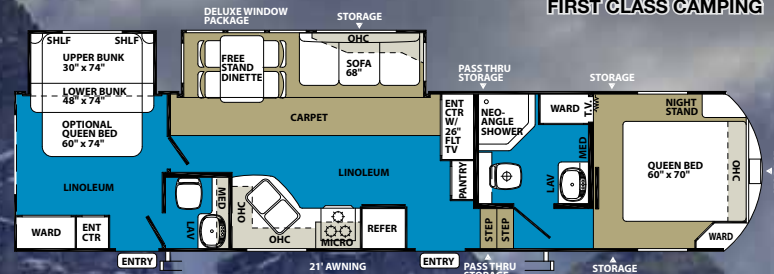
F246RLBS



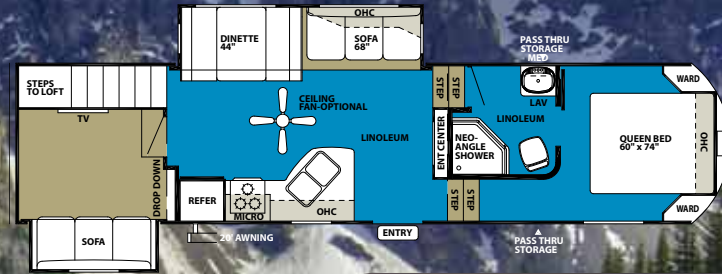
F276REDS



F346QBUD



F356RBDS



F316TBRD

246RBL5 FRONT CAP
 The Heritage Glen front cap is aerodynamically designed to create a better air flow around the fifth wheel. Coupled with the stylish and innovative rounded front, you will get better gas mileage on you next outing.



SPECIFICATIONS	F246RLBS	F276REDS	F316TBRD	F346QBUD	F356RBDS
HITCH WEIGHT lb	900	TBA	1490	1995	1420
AXLE WEIGHT	6560	TBA	8195	8210	7860
DRY SHIP WEIGHT	7460	TBA	9545	10205	9280
GWR	11060	TBA	11510	12155	11580
CCC cargo capacity	3541	TBA	1906	1891	2240
EXT LENGTH	28' 6"	TBA	36' 7"	39' 7"	38' 2"
EXT HEIGHT	12' 2"	TBA	12' 4"	12' 4"	12' 4"
INT HEIGHT	84"	TBA	84"	84"	84"
FRESH WATER CAP gal	42	TBA	42	46	42
BLACK WATER CAP gal	34.5	TBA	34.5	32	69
GREY WATER CAP gal	34.5	TBA	69	40	69
TIRE SIZE in	15"	TBA	15"	15"	15"
AWNING SIZE ft	18'	12'	20'	21'	21'

WILDWOOD HERITAGE GLEN

STANDARDS AND OPTIONS

FIRST CLASS CAMPING

CONSTRUCTION AND EXTERIOR

- Vacuum bonded lamination used on 4 walls and floors
- No wood framing in floors, roof and sidewalls
- Walk-on roof
- Fully enclosed heated underbelly
- Gel-coat fiberglass front cap (fifth wheels)
- Dometic™ one touch electric awning (2 yr. warranty)
- Awning includes a water release mechanism
- Roof is radiused for water run off
- Aerodynamic front radius (travel trailers)
- Aluminum wheels w/ steel belted radial tires
- Black frame tinted safety windows Jalousie Windows
- 30" smooth fiberglass radiused entry door with Venetian window (26" secondary door per floorplan)
- Diamond plate rock guard on front of travel trailer
- Swing arm entry assist handle
- Full pass through storage
- Upgraded ABS fender skirts
- EZ-Lube axles

- Powder coated and cambered I-beam frame
- Enclosed docking station (Fifth Wheel models)
- Seamless roto-cast holding tanks
- Black tank flush system
- Power slide-outs
- 6 gal. water heater w/ direct spark ignition
- Digital heat and cooling control
- Outside patio hookups for the TV set
- Cherry stained hardwood Mortise and Tenon cabinet door frames (Melaface Creme doors opt)

KITCHEN

- Dometic® double door refrigerator (2 yr. warranty)
- Deep basin stainless steel residential sink
- Sink cover
- Microwave oven w/ carousel
- Kitchen faucet w/ sprayer/raiser
- 3-burner dlx range w/ (1) 8,000 BTU burner
- Range hood w/ 12-Volt

exhaust fan and light

- Beau-Flor™ PVC flooring (2 year warranty)
- Solid wood 20" deep drawers w/ full extension ball bearing glides
- Silverware drawer w/ full extension drawer glides
- Solid hardwood cabinet doors and drawer fronts
- Wall-mounted systems monitor panel
- Oil rubbed bronze hardware on cabinets
- The cabinet faces are furniture grade plywood "lumber core" and are screwed not stapled
- Trash can storage (per floorplan)
- Luxurious e-granite countertops in kitchen and dinette
- Stainless steel finish on microwave and dinette
- 6 panel hardwood front face on refrigerator
- Knife rack on cook top

LIVING ROOM

- 78" Interior ceiling height
- Crown molding trimmed slide-out facia
- 13,500 BTU ducted roof air conditioning
- 44" or 48" oversized dinette
- Jumbo pull-out storage under dinette base
- Large dinette picture window
- TV with antennae, booster and DVD player
- Cable TV hookup w/ satellite

ready coax cable

- Extra large overhead cabinets
- Decorative wall light
- 30 or 35k BTU suburban forced air DSL furnace (2 year warranty)
- Cable TV and satellite prep
- Ducted and enclosed floor heat plenum
- Night shades
- 30" main entrance door w/ Venetian window
- E-granite dinette table
- Hide-a-bed sofa (per floorplan)
- Luxurious 18 weight nylon carpeting
- Models w/ Jiffy sofas include jumbo drawer storage
- "Vigor" Cherry interior wood

BEDROOM

- Serta residential mattress in RV size (Heritage Glen Advantage)
- Lift up bed in master bedroom provides under bed storage
- Bunks with 300 lb. weight rating
- Solid bedroom privacy doors
- Mirrored wardrobe with large drawers (most models)
- Bedroom entry door (per floorplan)
- Cabinet drawers 20" deep w/ full extension drawer guide

BATHROOM

- Black tank flush system
- Glass shower door (neo-angle shower)
- 12v power bath roof vent/exhaust fan
- Wooden medicine cabinet

w/ mirrored door

- Thetford® China foot flush toilet
- Tub surround
- Exterior entrance door (some floorplans)
- Beau-flor PVC flooring (w/ 2 year warranty)

SECURITY AND SAFETY

- LP leak detector
- Smoke detector
- Carbon monoxide detector
- Fire extinguisher
- Hitch light
- Amber patio light
- Welded heavy duty safety chains
- Electric brakes (all wheels)
- Certified under American national standards uniform code #119.2

POPULAR OPTIONS

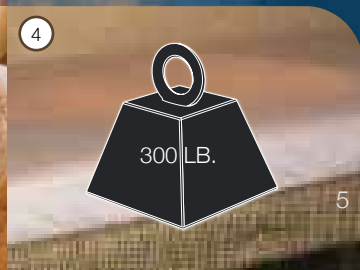
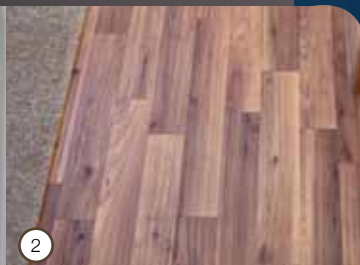
- Living room ceiling paddle fan (5th wheel models)
- Roof ladder
- Safety glass tinted windows
- 15,000 BTU ducted air w/ quick cool
- Outside shower

- Double air hide-a-bed sofa
- Skylight over tub
- Slide room awning(s)
- Phone jack
- Creme melaface overhead cabinets in kitchen and slide-out
- Bumper mounted swing arm grill
- Free standing dinette w/ 4 chairs
- Outside kitchen (312QBUD travel trailer and 346QBUD fifth wheel)

Contact your Wildwood dealer for a complete list of options.

FEATURES DOCKING IT

- 1 Docking station (fifth wheels only)
- 2 The BeauFlor™ linoleum flooring has a woodgrain like finish and is easy to clean
- 3 Under sofa storage gives you extra space to put your belongings
- 4 All bunks are rated for 300 lbs.



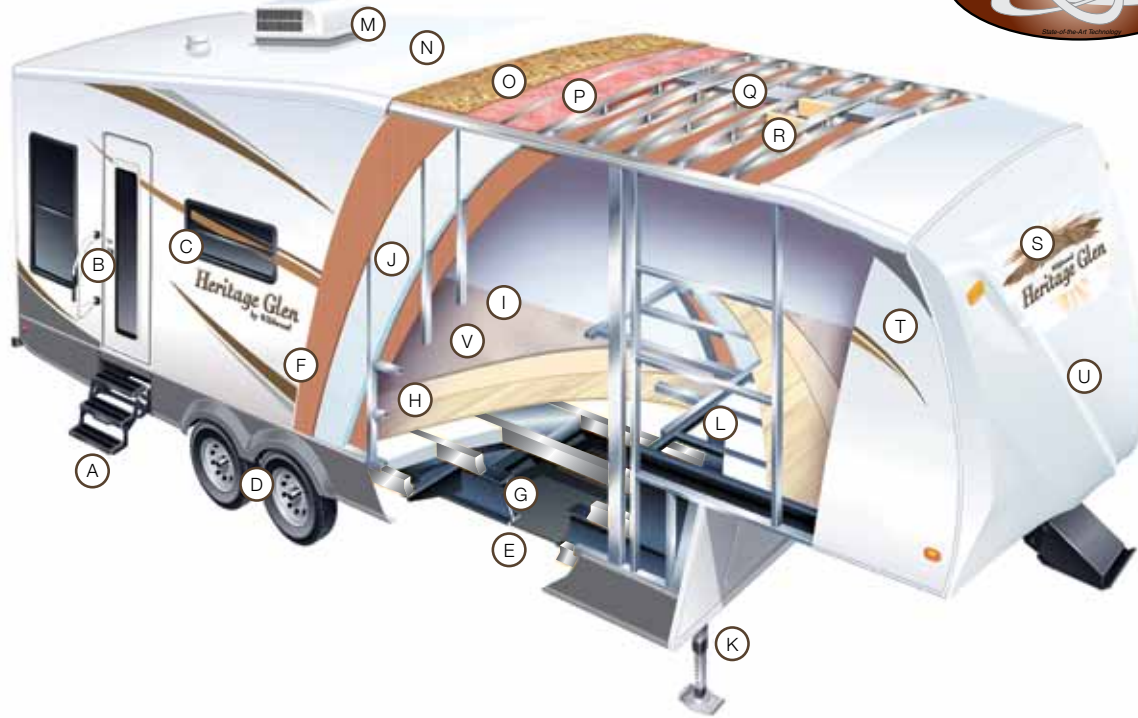
FEATURES DRAWERS AND MORE

- 1 Standard stainless steel sink with sprayer faucet
- 2 Toy lock
- 3 Roller bearing drawer guides make opening and closing the drawers a snap



WILDWOOD HERITAGE GLEN CONSTRUCTION

FIRST CLASS CONSTRUCTION



1 The latest technology ZX-75 AM/FM radio with CD and DVD Player, MP-3 & SD card hook-up 2 Heated and enclosed underbelly protects the undercarriage and aids aerodynamics 3 Dometic™ one-touch electric awning - the push of a button extends and retracts your awning - this awning has a water release mechanism 4 Ultra-Lube™ axles for easy greasing of wheel bearings without disassembly.



- A Main triple entry steps
- B Folding entry assist handle
- C Tinted windows
- D Ultra lube axles
- E Heated and enclosed underbelly
- F Laminated vacuum-bonded aluminum framed sidewalls
- G Powder-coated frame with cambered chassis

- H 3" laminated floor w/ aluminum framing
- I Carpet w/ padding
- J R-9 block foam insulation
- K Power front jacks (optional)
- L In-Floor ducted heat
- M Ducted 13.5 K BTU air conditioning
- N Seamless rubber roof (12 yr. warranty)
- O 3/8" roof decking (full walk-on roof)

- P R-7 polystyrene insulation floor & ceiling
- Q Insulated duct for central air STD (all models)
- R 5" truss galvanized roof rafters
- S Gel coat fiberglass cap (fifth wheels only)
- T Fiberglass exterior
- U Hitch light
- V Beau Flooring

5 The Jalousie window keeps moisture on the outside and fresh air inside 6 The 30" Radiused door makes for easy access 7 Nitro Filled tires for easy towing

WILDWOOD HERITAGE GLEN INTERIOR COLORS



BASIL INTERIOR



SADDLE INTERIOR



BORDEAUX INTERIOR



CAPPUCCINO INTERIOR



Scan this barcode using a QR Reader on your smart phone to learn more about Forest River.



Forest River, Inc.
55470 C.R. 1
Elkhart, IN 46514
(574) 389-4600
www.forestriverinc.com/heritageglen
www.forestriveraccessories.com

ALL SPECIFICATIONS CONTAINED HEREIN ARE BASED ON THE LATEST PRODUCT INFORMATION AT TIME OF PRINTING. FOREST RIVER RESERVES THE RIGHT TO MAKE CHANGES IN COLORS, MATERIALS, EQUIPMENT AND SPECIFICATIONS AT ANY TIME WITHOUT NOTICE AND ASSUMES NO RESPONSIBILITY FOR ANY ERRORS IN THIS BROCHURE. PIP 041808



FOREST RIVER HALLMARK OF EXCELLENCE PRE-DELIVERY INSPECTION FACILITIES

THAT'S 20,000 SQUARE FEET
OF QUALITY ASSURANCE
THE BARE ESSENTIALS FOR A
PREMIUM PRODUCT

Brought online in 2005, Forest River is proud of its state-of-the-art test facility. This beautiful building blends many of the old tried and true methods of testing our diverse types of RVs with new innovative ways of solving quality issues. Being centrally located to most Forest River manufacturing facilities, this 20,000 square foot PDI (Pre-delivery Inspection) test building gives immediate daily feedback to individual managers. This assures the production facilities that nothing has slipped by the plant's quality assurance personnel and the units are "green" and ready to ship.



PEACE OF MIND

Forest River has yet another exclusive feature to offer: One year of free roadside assistance will be given to every WILDWOOD customer. This is just one more way to say "Thank you" and to ensure an enjoyable traveling experience.

FOREST RIVER ENCOURAGES YOU TO BUY LOCALLY

Forest River, Inc. strongly encourages our retail customers to purchase from their local dealership whenever possible due to the following factors:

- Our dealers are as a rule, independently owned and operated businesses. Outside of those customers they personally sold products to, they are not contractually obligated to perform warranty service on Forest River products that were purchased elsewhere. There may be an occasion that you would be required to return to the point of purchase to satisfy warranty requirements.
 - Although many dealerships will eventually service products not purchased at their place of business, they will usually take care of their customers and other Forest River customers who are traveling away from their local dealer as they would their own.
 - Local purchases allow a customer to establish a relationship with a dealer close to home. This relationship provides the customer with a convenient location for service and support from a "home town" professional.
 - The opportunity for a thorough PDI (Pre Delivery Inspection) and product orientation is an additional benefit of buying from your local dealer. Further providing the opportunity for refresher courses or the ability to get questions answered much more conveniently.
 - For our Canadian customers, there are also requirements which must be met to bring an RV purchased out of the country to their home. Although not insurmountable, these requirements may involve such things as additional inspections and certifications, taxes and fees. Your local Canadian dealer is a professional at meeting these requirements.
- Forest River's goal is for all RV Owners to fully enjoy their RV experience. In light of this goal, and considering the advantages of buying local, we encourage you to be thorough when determining what product to purchase and which dealer to purchase it from as both are key to your ultimate satisfaction and the realization of your dreams.

YOUR WILDWOOD DEALER