

*Laredo*  
By Keystone

# *Laredo*

*By Keystone*

BEST  
IN  
CLASS

More Best in Class  
Features than Competition!







*Laredo*  
By Keystone



*265 RL shown in Birch Decor, provides you with elegant residential features that allow you to relax in style.*



## ***Laredo— One of a Kind***

***“Best in Class”*** - With Laredo, this is more than a slogan - it's the strategy that guides us every day as we aspire to create the perfect Recreational Vehicle. If you desire an easy-to-tow fifth wheel that doesn't skimp on features, conveniences or quality, Laredo will offer you an RV that is truly ...

**“BEST IN CLASS” ... BEST IN VALUE.**

***When you are the  
Best in Class ...***



***Laredo offers more storage than anyone in its class,  
with plenty of room for all the extra supplies.***



Your kitchen countertops are made of genuine Corian® with matching sink covers and paired with an upgraded metal high rise faucet and an oversized sink to accommodate your large pots and pans.



Every drawer includes full extension steel ball bearing drawer guides for strength and maximum storage that allows for full use of space.



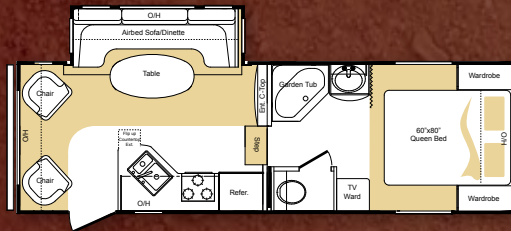
Laredo features residential-style kitchen cabinets that have convenient shelves, which allow you to pack everything you desire.



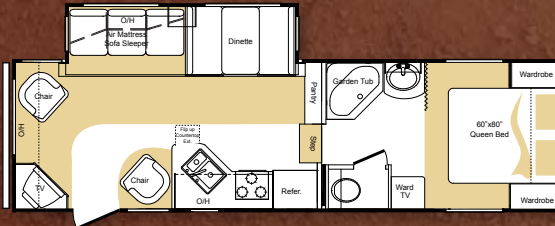


# Laredo Fifth Wheel Floorplans

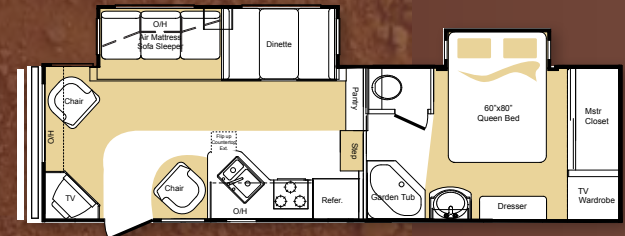
By Keystone



245 RL



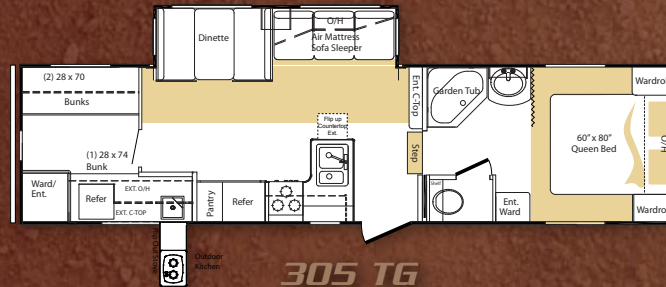
265 RL



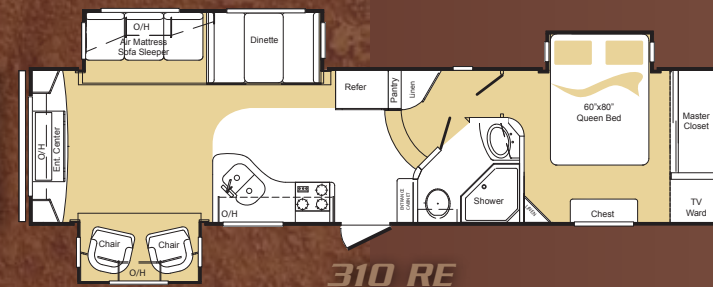
266 RL



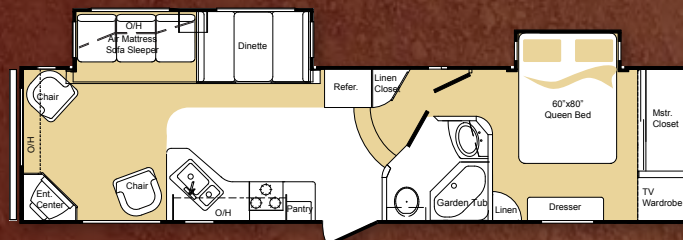
298 BH



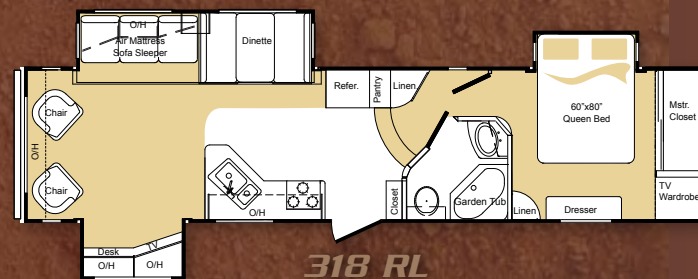
305 TG



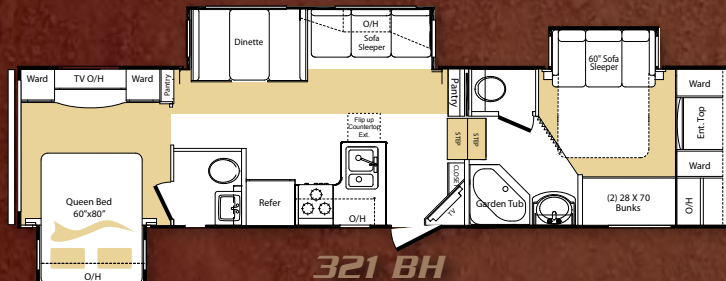
310 RE



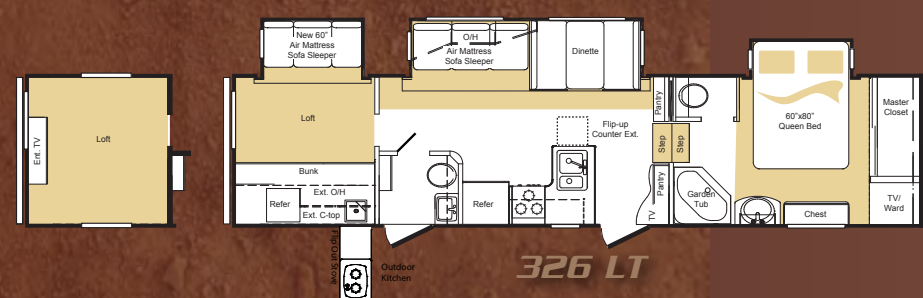
316 RL



318 RL



321 BH



326 LT



# Construction

## WALL CONSTRUCTION (R-9)

- 1 Gel-coated fiberglass exterior
- 2 1/8" Luan wood backer
- 3 Hi-density block foam insulation
- 4 Radius window corner blocks
- 5 2" Welded aluminum sidewall studs
- 6 Fiberglass batten insulation
- 7 High-gloss front fiberglass cap
- 8 Metal backing strips

## ROOF CONSTRUCTION (R-28)

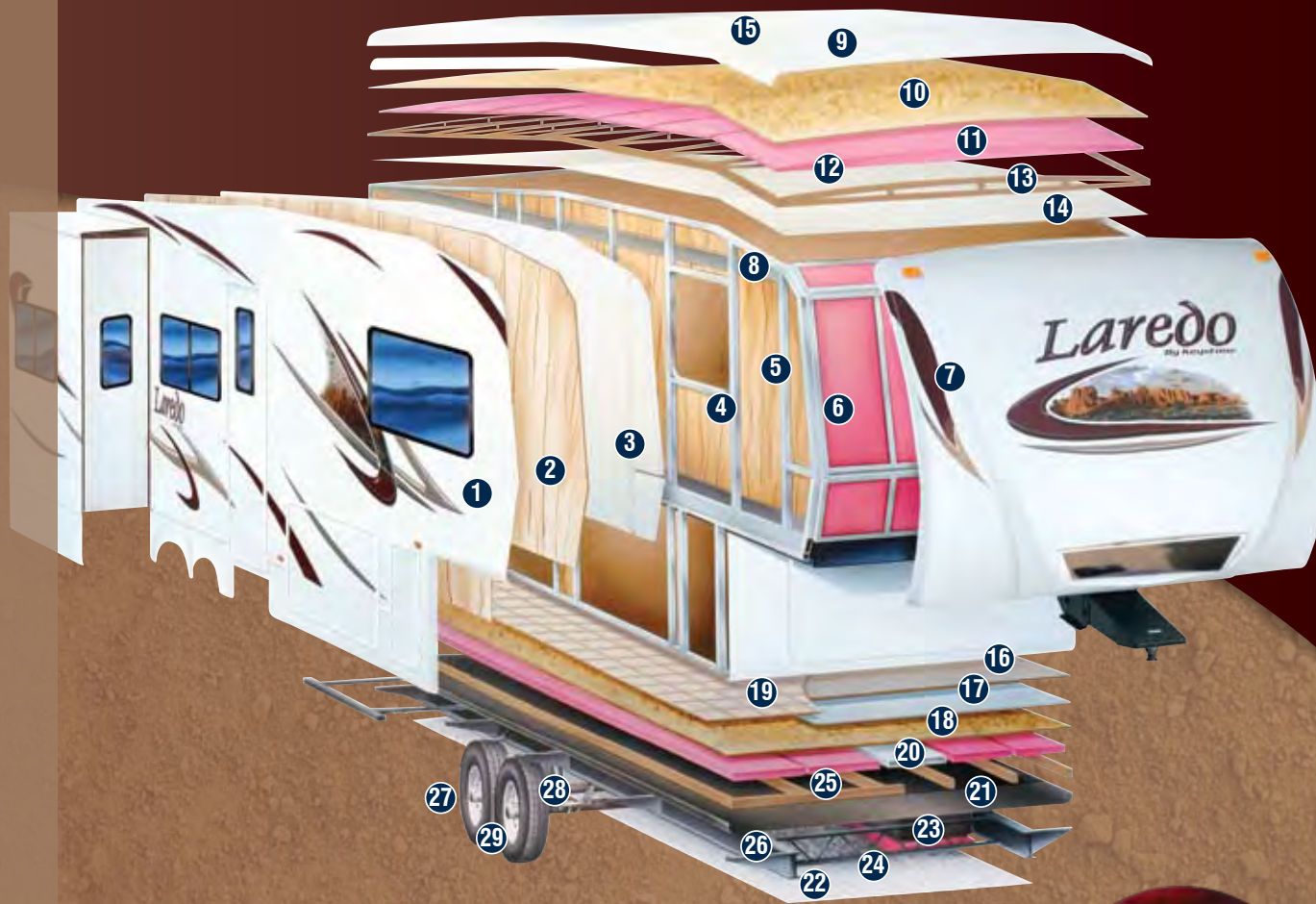
- 9 One-piece EPDM rubber roof with 12-year warranty
- 10 3/8" Fully walkable roof decking
- 11 Fiberglass batten insulation - 2 layers
- 12 Heat reflective Astro foil insulation
- 13 5" "Snow Load" roof trusses
- 14 1/8" Ceiling decking with vinyl protection
- 15 Vented attic

## FLOOR CONSTRUCTION (R-30)

- 16 Residential grade carpet with stain protection
- 17 Residential grade carpet padding
- 18 5/8" Seamless wood floor decking with limited lifetime warranty
- 19 Residential grade linoleum
- 20 In-floor ducted heat
- 21 Darco wrap (main floor)
- 22 Astro foil bubble insulation
- 23 Fiberglass batten insulation - 2 layers
- 24 One-piece, fluted polypropylene fully enclosed sub-floor
- 25 3" floor joists on 12" - 16" centers
- 26 Therma Shield 37 holding tank enclosure

## TIRE & CHASSIS

- 27 10" or 8" steel "powder coated" I-beam frame
- 28 15" or 16" radial tires
- 29 EZ Lube axles



**Expand  
Your  
Comfort  
Zone**



**Laredo's exclusive Comfort Zone Climate System provides industry leading protection from extreme early and late season temperature variations.**

- Enclosed and Heated Underbelly and Gate Valves
- 35,000 BTU Furnace
- R-28 Roof Insulation
- R-30 Floor Insulation
- Heated Pass Through Storage
- Vented Attic System

|                   | 245 RL  | 265 RL | 266 RL | 298 BH | 305 TG  | 310 RE | 316 RL | 318 RL | 321 BH | 326 LT |
|-------------------|---------|--------|--------|--------|---------|--------|--------|--------|--------|--------|
| Shipping Weight   | 7390    | 7974   | 8473   | 9787   | 8890    | TBD    | 9413   | 10080  | 10255  | TBD    |
| Carrying Capacity | 2410    | 2626   | 2527   | 2063   | 2935    | TBD    | 2587   | 2920   | 2745   | TBD    |
| Hitch             | 1310    | 1360   | 1775   | 1690   | 1675    | TBD    | 1785   | 1845   | 1980   | TBD    |
| Exterior Length   | 26' 11" | 30'    | 30' 5" | 33' 3" | 33' 11" | 36'    | 35'    | 36'    | 36'    | 36' 9" |
| Exterior Height   | 12' 4"  | 12' 4" | 12' 4" | 13'    | 12' 7"  | 12' 7" | 12' 7" | 12' 7" | 12' 7" | TBD    |
| Fresh Water Gal.  | 49      | 49     | 49     | 55     | 49      | 55     | 55     | 55     | 55     | 55     |
| Waste Water Gal.  | 40      | 40     | 40     | 75     | 40      | 40     | 40     | 40     | 75     | 75     |
| Grey Water Gal.   | 40      | 40     | 40     | 75     | 100     | 75     | 75     | 75     | 75     | 75     |



# Laredo *More Best in Class Features ...*

By Keystone



Exterior storage is necessary and Laredo delivers with up to 129 cubic feet of unobstructed pass thru storage.



This cleverly designed roto-cast tub was created as a convenient place to store wet or greasy items. However, some of our customers have found other innovative applications.



A convenient flip of a switch allows the Laredo to be leveled by powerful 12-volt electric stabilizer jacks.



An electric slideout Stor-Mor utility tray is great for bikes, firewood and portable generators.



The Laredo sofa sleeper with electrically operated air mattress also offers over 8 cubic feet of storage beneath the bed.



The insulated radius corner bus style slam baggage doors feature an automotive rubber seal to protect your belongings from the elements. Heavy duty gas struts make the operation easy, and locks are individually keyed for security.



The vented attic system promotes even air exchange and allows moisture to escape from the roof.



"Best in Class" innovation never stops with the introduction of the "Outdoor Kitchen" - a Laredo exclusive.  
(Found on the 305TG and 326LT.)



## Max Turn Technology

When given the challenge of creating a Recreational Vehicle that maximizes turning radius, reduces fuel consumption and tows great on the worst of roads, Laredo engineers utilized MAX TURN TECHNOLOGY to create a fifth wheel that has become the benchmark for Hi-Performance Towing.



Laredo's state of the art fiberglass cap features increased fuel economy while towing, also includes Hitch Vision and docking lights which allow customers to hook-up with ease.



## Super Sport Suspension



Equa Flex rubber suspension with heavy duty axles.



Heavy duty 12" electric brakes.



Radial tires & aluminum wheels provide both safety and a sporty look!

Laredo's Super Sport Suspension will absorb all the "shock waves" created by potholes and other road irregularities. Equipped with larger heavy duty 12" brakes, Laredo can be stopped easily when braking.



## Laredo Decors



Rain Forest



Birch



Look for our  
Walk Around Video  
on our website!

## Laredo Fifth Wheel Standards & Options

### Tires & Chassis

- Powder-coated I-beam frame
- Tube style bumper w/sewer hose storage
- Electric slideout system w/manual override
- Adjustable extended hitch pin
- Electric bike/storage rack (200# limit) (N/A 245)
- Radial tires
- EZ lube axles
- 12" electric brakes
- Full-size spare tire

### EXTERIOR

- Fully enclosed underbelly
- Heated, enclosed holding tanks & gate valves
- Oversized lighted pass-thru storage w/tool box storage
- Roto cast storage for wet or greasy items
- Exterior shower w/hot & cold
- Fold away entry assist handle
- Exterior marine grade speakers
- Rain gutters w/downspouts
- Security light
- Entrance door light
- Rear ladder
- Triple entrance steps
- Electric front jacks w/adjustable snap pins
- Aerodynamic front cap w/Hitch Assist Mirror & 2 LED lights w/Max Turn Technology
- Outside 110V outlet & TV connection

### INTERIOR

#### Living Area

- Extra wide dinette w/storage below
- 6'3" slide room height
- Ventilating windows on slideout end walls
- Overhead cabinets in slide rooms
- Residential grade carpet and padding
- Stain resistant fabrics
- Pleated day/night shades
- Designer window treatments
- Raised panel mortise & tenon cabinet doors
- Entertainment center w/TV cabinet

### Kitchen

- Residential-size overhead cabinets
- Dual Corian sink covers
- Flip up Corian countertop extension (N/A 316, 318)
- 60/40 deep-bowl under-mount sink
- Metal high-rise faucet
- Linoleum floor
- Ball bearing full extension drawer guides

### Bathroom

- Oversized shower w/glass door
- Tub surround w/shelves
- Porcelain foot pedal flush toilet
- Residential-size bath sink
- Medicine cabinet
- Skylight over bath
- Power roof vent

### Bedroom

- 60"X80" innerspring mattress
- Bedspread w/matching headboard
- Wardrobe storage
- TV hook-up
- Reading lights

### Appliances

- 12V AM/FM/CD/DVD home theater system
- w/ surround sound effect speakers
- Double door refrigerator w/wood inserts
- Microwave w/carousel
- Range hood and light
- 13,500 BTU ducted A/C
- 22" high output range w/auto igniter

### Utilities

- Easy access double 30-lb. LP bottles w/auto changeover
- 35,000 BTU high-output furnace w/automatic ignition
- 6 Gallon gas/elec. DSI hot water heater (245, 265, 266, 305)
- Winter Guard winterizing kit
- Water heater bypass kit
- Systems monitor panel

- 55-amp convertor
- 30-amp power cord
- Cable & satellite hook-ups

### Safety

- LP gas leak detector
- Smoke detector
- Carbon monoxide detector
- Fire extinguisher
- 12" Electric brakes w/breakaway switch
- Safety glass windows

### OPTIONAL EQUIPMENT

- 15,000 BTU ducted A/C
- Free standing dinette w/4 chairs
- Canadian certification

### Best in Class Package (All FWs)\*

- Adjustable electric awning
- 26" LCD HD TV (298-32" 310-42")
- Electric rear stabilizer jacks
- Equa-Flex suspension system
- Aluminum wheels
- Air mattress sleeper sofa w/storage below
- Corian surface countertops (kitchen)
- Bus style slam baggage doors
- Comfort Zone Climate System

### Bigger is Better Package

(298, 310, 316, 318, 321, 326)\*

- 8 cubic foot refrigerator
  - 12 gallon gas/electric DSI hot water heater
  - 16"-8 lug aluminum wheels
  - 6,000lb axles
  - 50 AMP service
  - Wire and frame for 2nd A/C
- \*Mandatory Package

