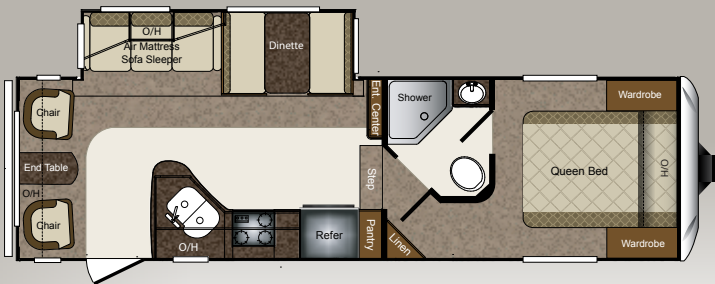


Super Lite Series Laredo

By Keystone



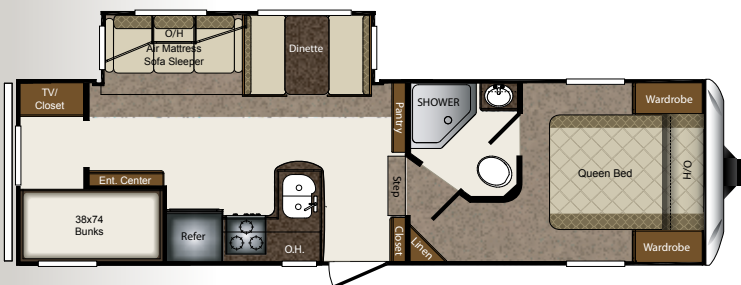
LAREDO SUPER LITE SERIES FIFTH WHEELS



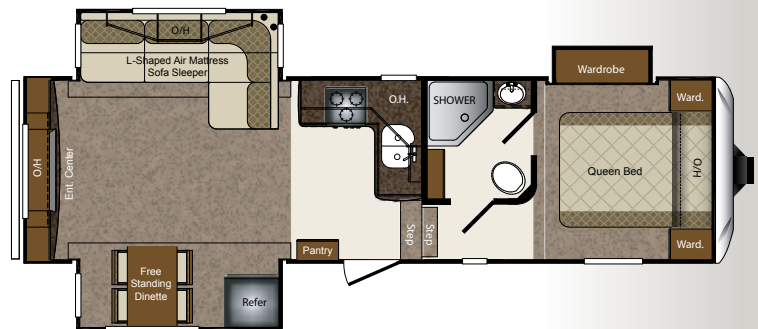
264SRL Length: 30' 1" Shipping Weight: 7190 lbs.
Carrying Capacity: 2810 lbs.



268SRE Length: 29' 9" Shipping Weight: 7210 lbs.
Carrying Capacity: 2790 lbs.



275SBH Length: 30' 8" Shipping Weight: 7199 lbs.
Carrying Capacity: 2801 lbs.



289SRE Length: 31' Shipping Weight: TBD
Carrying Capacity: TBD

STANDARDS AND OPTIONS

EXTERIOR

- Fully enclosed underbelly
- Heated, enclosed holding tanks & gate valves
- Oversized lighted pass-thru storage
- Exterior shower w/hot & cold
- Fold away entry assist handle
- Exterior marine grade speakers
- Rain gutters w/downspouts
- Security light
- Entrance door light
- Triple entrance steps
- Electric front jacks w/adjustable snap pins
- Aerodynamic front cap w/Hitch Assist Mirror & 2 LED lights w/Max Turn Technology
- Lighted entry step

TIRES & CHASSIS

- Powder-coated I-beam frame
- Tube style bumper w/sewer hose storage
- Electric slideout system w/manual override
- Adjustable extended hitch pin
- Radial tires
- EZ lube axles
- 12" electric brakes
- Full-size spare tire

INTERIOR

Living Area

- Extra wide dinette w/storage below
- Ventilating windows on slideout end walls
- Overhead cabinets in slide rooms
- Residential grade carpet and padding
- Stain resistant fabrics
- Pleated shades
- Designer window treatments
- Raised panel mortise & tenon cabinet doors
- Entertainment center w/TV cabinet

Kitchen

- Residential-size overhead cabinets
- Large single basin sink
- High-rise faucet
- Linoleum floor
- Ball bearing full extension drawer guides

Bathroom

- Oversized shower w/glass door
- Tub surround w/shelves
- Foot pedal flush toilet
- Residential-size bath sink
- Medicine cabinet
- Skylight over bath
- Power roof vent

Bedroom

- Queen pillow top mattress (mandatory)
- Wardrobe storage
- TV hook-up
- Reading lights

Appliances

- 12V AM/FM/CD/DVD home theater system w/ surround sound effect speakers
- Double door refrigerator
- Microwave w/carousel
- Range hood and light
- 13,500 BTU ducted A/C
- High output range w/auto igniter

Utilities

- Easy access double 30-lb. LP bottles w/auto changeover
- 30,000 BTU high-output furnace w/automatic ignition
- 6 Gallon gas/electric DSI hot water heater
- Winter Guard winterizing kit
- Water heater bypass kit
- Systems monitor panel
- 55-amp convertor
- 30-amp power cord
- Cable & satellite hook-ups
- Black tank flush

Safety

- LP gas leak detector
- Smoke detector
- Carbon monoxide detector
- Fire extinguisher
- 12" Electric brakes w/breakaway switch
- Safety glass windows

Best in Class Package (All FWs)*

- Adjustable electric awning
- LCD HDTV
- Electric rear stabilizer jacks
- Equa-Flex suspension system
- Aluminum wheels
- Air mattress sleeper sofa with storage below
- Deluxe exterior graphics
- Residential glazed maple cabinet doors
- Glacier Package
- Exterior waterworks utility center
- Crown molding

*Mandatory Package

Super Lite Series
Laredo
By Keystone

www.keystone-laredo.com

Product information is as accurate as possible at the date of publication of this brochure. Features, floor plans, and specifications are subject to change without notice. Please also consult Keystone's web site at keystonerv.com for more current product information and specifications. Tow Vehicle Disclaimer. CAUTION: Owners of Keystone recreational vehicles are solely responsible for the selection and proper use of tow vehicles. All customers should consult with a motor vehicle manufacturer or their dealer concerning the purchase and use of suitable tow vehicles for Keystone products. Keystone disclaims any liability or damages suffered as a result of the selection, operation, use or misuse of a tow vehicle. KEYSTONE'S LIMITED WARRANTY DOES NOT COVER DAMAGE TO THE RECREATIONAL VEHICLE OR THE TOW VEHICLE AS A RESULT OF THE SELECTION, OPERATION, USE OR MISUSE OF THE TOW VEHICLE. 12/2011