

**2011**  
**Floor Plans**

***Nomad***<sup>®</sup>

**Joey Select Travel Trailers**

**Park Trailers**

**Ultra-Lite Travel Trailers & Fifth Wheels**

**Alumabond Fifth Wheels**



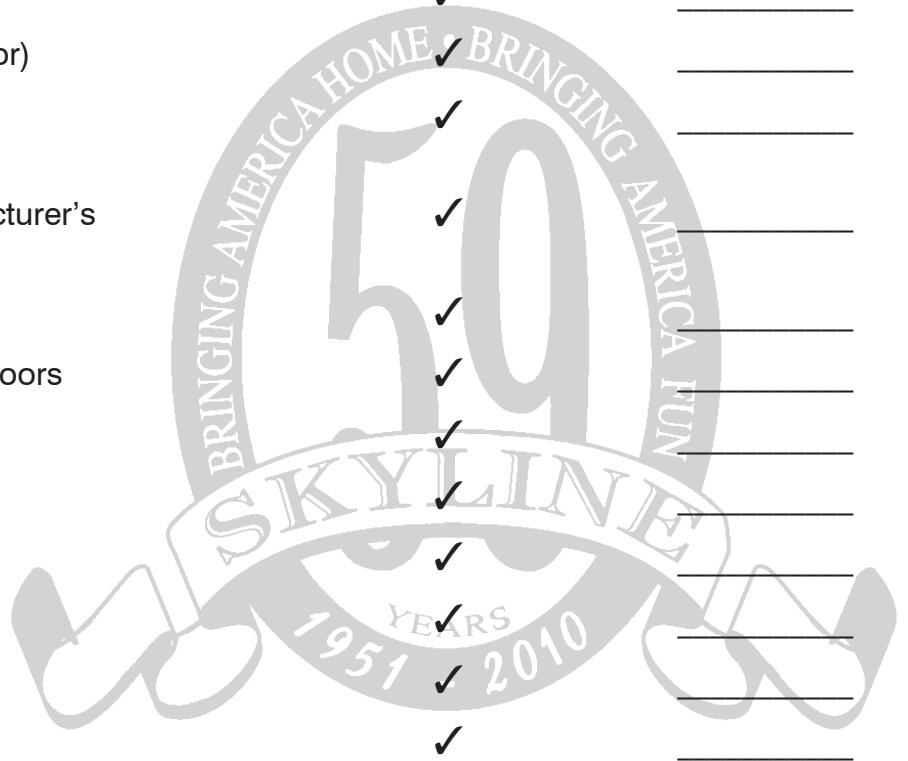
Your local ***Nomad*** dealer is:

**SKYLINE**<sup>®</sup>  
BRINGING AMERICA HOME. BRINGING AMERICA FUN.

Effective May 2010

# Dare to Compare

	<b>SKYLINE®</b>	<b>Other Brand</b>
3-2-1 Warranty	✓	_____
Individually Weighed — <i>Certified</i> — Posted on Exterior	✓	_____
Rain Tunnel Tested	✓	_____
Simulated Road Tested (Shake Simulator)	✓	_____
Stile & Rail Cabinet Construction on Upper & Lower Cabinets	✓	_____
Seamless One-Piece Roof with Manufacturer's 12 Year Limited Warranty	✓	_____
Radius Clamp-Ring Windows	✓	_____
Radius Sealed Outside Compartment Doors	✓	_____
5/8" Tongue & Groove Floor	✓	_____
Cambered Chassis	✓	_____
R-7 Insulation	✓	_____
Larger-Capacity Holding Tanks	✓	_____
Upgraded Name Brand Appliances	✓	_____
59 Years in Business	✓	_____



**S**ince 1951, we've been building products that measure up to the expectations of our customers. From the very beginning, we've understood that our customers come first. You're the reason we're in business and every member of the Skyline team is committed to bring you nothing less than the best.

This commitment has earned Skyline its nationwide reputation for leadership and uncompromising integrity. Our designers, engineers, and production people work as a team to build RVs that meet your needs. The best RVs at the best prices. Each backed by a straightforward one-year full warranty and a nationwide customer service program that is short on red tape and long on results.

Skyline is a solid corporate citizen having no corporate debt and a strong cash position. For our customers, this means that Skyline has the financial muscle to stand in back of its products and you can count on the fact that Skyline will be around if you ever need us.

For us at Skyline, "*Bringing America Home. Bringing America Fun.*" is more than a slogan. It is a statement of our responsibility to a country that has been good to us. It is a pledge to extend our record of leadership, to continue the long tradition of superior service, and to strengthen the trust placed in us by the customers we are privileged to serve. It is our determination to serve America and its people with quality, affordable recreational vehicles for many years to come.





## Interior

### Cabinets

- All Wood Drawers w/Full Extension Ball Bearing Guides
- High Pressure Laminate Countertops
- Maple Cabinets
- Aluminum Framing on Select Cabinets
- Hardwood Framed Cabinet Doors

### Decor

- Color-Coordinated Designer Interiors
- Box Valance on All Living Area Windows
- Mini Blinds
- Embossed Vinyl Flooring
- Decorative Glass Doors in Select Overhead Cabinets
- Lambrequin Valance Legs — All Windows Excluding Kitchen & Bunks

### Kitchen & Living Area

- Large Double Door Dometic® Refrigerator
- Acrylic Kitchen Sink w/Deep Basin
- High Rise Kitchen Faucet
- Lighted Range Hood w/Fan
- Park Cable for TV Hookup
- Six Gallon Fast-Recovery DSI Gas Water Heater
- 120 V to 12 V Power Convertor (55 amps)
- Water Heater Bypass
- Microwave
- Monitor Panel
- 13,500 Btu Air Conditioner
- AM/FM/DVD Stereo w/USB & iPod Connections & 4 Speakers
- 17" Wedgewood® 3-Burner Range w/Oven & Piezo

### Bedroom / Bath

- TV Hookup (Where Applicable)
- Color-Coordinated Quilted Bedspread
- Evergreen© Mattress
- Power Bath Exhaust Fan
- Towel Ring
- ABS Tub/Shower
- Deluxe Padded Headboard (Where Applicable)
- Deluxe Medicine Cabinet

## Exterior

### Roof Construction

- Tapered Trusses on 16" Centers to Promote Water Runoff
- Seamless One-Piece Roof w/Manufacturer's 12-Year Limited Warranty
- Wide Rain Gutter Rails w/Extra Long Drip Spouts
- R-7 Insulation

### Wall Construction

- Fiberglass Exterior w/Custom Styled Exterior Graphics
- Welded Aluminum Frame Sidewalls & Endwalls
- Laminated Sidewall Construction w/Block Foam Insulation, Steel Cabinet Backers, Lauan Exterior Panel Under Fiberglass Exterior
- Radius Slider Clamp-Ring Windows
- Radius Entry Door w/Screen Kick Panel
- Flush-Mount Heavy Duty Exterior Trunk Doors w/Continuous Hinge
- Patio Convenience Light

### Chassis Construction

- Super-Lube® Hubs on All Axles
- Steel Frame I-Beam Chassis w/Steel Outriggers
- Dual Battery Rack (Travel Trailers)
- Black Rotocast Wheel Wells (Most Models)
- 10" Electric Brakes at All Wheels
- Safety Chains (Travel Trailers)
- Enclosed Underbelly Containing All Tanks (Drain Valves Not Enclosed)
- Rear Bumper
- Breakaway Safety Switch
- Stabilizer Jacks (2 at Rear on Fifth Wheels; 4 on Travel Trailers)
- Goodyear® Tires
- Power Front Jacks (Fifth Wheels Only)
- Spare Tire Kit
- Double Entry Step on Travel Trailers; Triple Entry Step on Fifth Wheels

### Floor Construction

- Tightly Sealed Woven Polyethylene Underbelly
- Laminated Floor Construction w/Welded Aluminum Frame, Block Foam Insulation & Lauan Plywood Decking

### Features

- 30 lb. LP Tanks w/Auto Changeover (Single 40 lb. Bottle on Model 195)
- Rotocast Holding Tanks w/Drain Outlet
- Under-Floor Water Tank to Maximize Interior Storage & Lower Center of Gravity
- Exterior Hitch Light
- Exterior Assist Handle at Each Entry Door
- Exterior Patio Receptacle
- Molded Fender Skirt
- 30 amp Power Shore Line
- Detachable Power Shore Line
- Color-Coordinated A&E® Side Awning
- TV Antenna
- Propane Bottle Cover (Travel Trailers)
- Exterior Speakers
- Swing-Away Exterior Assist Handle

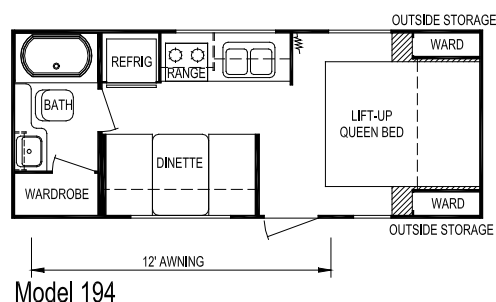
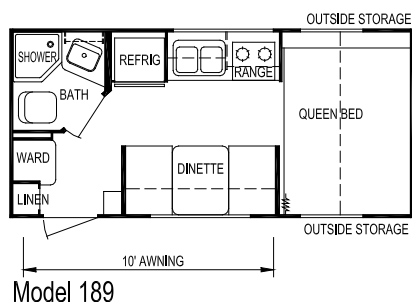
## Security & Safety

- LP Gas Leak/Carbon Monoxide Detector
- Smoke Detector
- Fire Extinguisher
- Flush Door Latch w/Integral Dead Bolt Lock

## Popular Options

- Aluminum Wheels
- Outside Grill
- Outside Shower
- 19" or 26" Vizio® LCD TV
- Tinted Safety Glass Windows





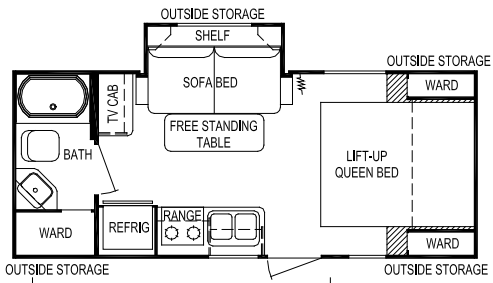
## Specifications

Model	Ultra-Lite Travel Trailers					Ultra-Lite Fifth Wheels				
	189	194	210	242	248	195	212	213	214	
<b>Weights</b>	Unloaded Vehicle Weight (see Note 2)	3,325	3,700	3,950	4,525	4,025	4,100	4,975	5,175	4,800
	Dry Hitch Weight	350	450	500	525	475	775	1,100	1,200	1,100
	Dry Axle Weight	2,975	3,250	3,450	4,000	3,550	3,325	3,875	3,975	3,700
	GVWR (Total Capacity of Trailer)	4,950	4,950	5,940	5,940	5,940	6,700	6,700	6,700	6,700
	Carrying Capacity (see Note 2)	1,450	1,075	1,800	1,225	1,750	2,425	1,525	1,300	1,700
<b>Accommodations</b>	Sleeping (standard / optional)	3	4	4	6	6	6	4	5	6
	Bed Size (standard)	60" x 80"	60" x 74"	60" x 74"	60" x 74"	60" x 74"	60" x 74"	60" x 74"	60" x 74"	60" x 74"
	Second Bed Size	N/A	N/A	N/A	N/A	N/A	N/A	N/A	N/A	N/A
	Dinette Size	33" x 70"	39" x 70"	N/A	39" x 70"	39" x 70"	39" x 70"	N/A	33" x 66"	39" x 70"
	Sofa	N/A	N/A	42" x 64"	42" x 64"	N/A	42" x 64"	42" x 64"	42" x 64"	42" x 64"
<b>Measurements</b>	Exterior Length (see Note 3)	19'-10"	22'-7"	22'-5"	27'-0"	25'-6"	21'-8"	21'-5"	23'-5"	24'-2"
	Exterior Width (see Note 3)	90"	90"	90"	90"	90"	90"	90"	90"	90"
	Exterior Height (see Note 3)	9'-11"	9'-11"	9'-11"	9'-11"	9'-11"	10'-1"	10'-1"	10'-1"	10'-1"
	Interior Height	76"	76"	76"	76"	76"	76"	76"	76"	76"
<b>Capacities</b>	Fresh Water System (gallons)	32	32	32	32	32	32	32	32	32
	Gray Water Tank (gallons)	28	28	28	28	28	28	28	28	28
	Black Water Tank (gallons)	28	28	28	28	28	28	28	28	28
	Air Conditioner Size	13,500	13,500	13,500	13,500	13,500	13,500	13,500	13,500	13,500
	Awning Size	10'	12'	12'	14'	14'	14'	12'	12'	14'
	Convertor Size (amps)	55	55	55	55	55	55	55	55	55
	Furnace Rating (Btu)	18,000	18,000	18,000	18,000	18,000	18,000	18,000	18,000	18,000
	Propane Gas Capacity (pounds)	60	60	60	60	60	40	60	60	60
	Tires	205/75R14-C	205/75R14-C	205/75R14-C	205/75R14-C	205/75R14-C	205/75R14-C	205/75R14-C	205/75R14-C	205/75R14-C
	Water Heater (gallons)	6	6	6	6	6	6	6	6	6

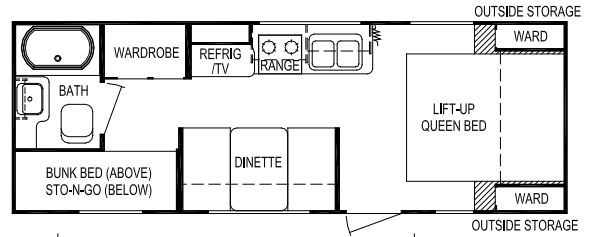
### Notes

- (1) All weights, dimensions, and capacities shown are approximate values.
- (2) Unloaded vehicle weight and carrying capacity will vary depending upon optional equipment. Full propane tanks are factored into carrying capacity. Skyline weighs every unit at the factory. See trailer weight information label located inside the front entry door for specific unloaded vehicle weight and cargo carrying capacity.
- (3) Dimensions stated to industry standards. Exterior length includes approximately a four foot hitch on travel trailers. Exterior height includes air conditioner, if installed. Exterior width does not include the width of the fenders and tires, which may extend up to 5" on each side of the body.

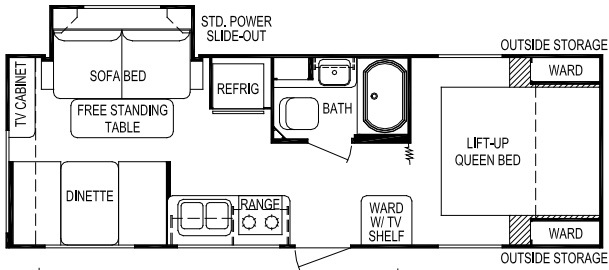
# 2011 Ultra-Lite Travel Trailers



Model 210

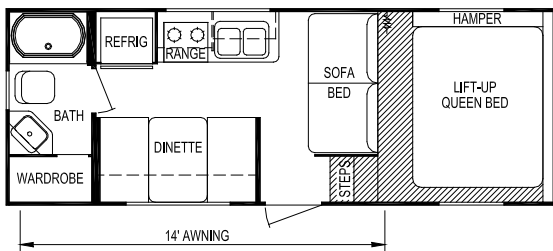


Model 248

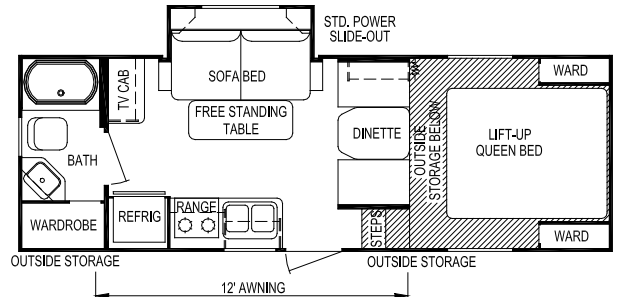


Model 242

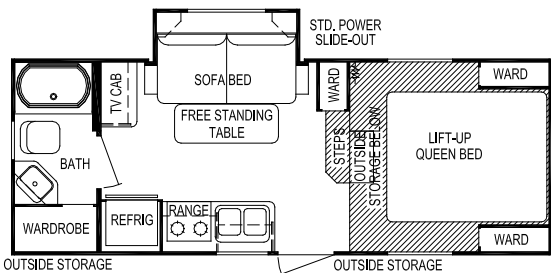
# 2011 Ultra-Lite Fifth Wheels



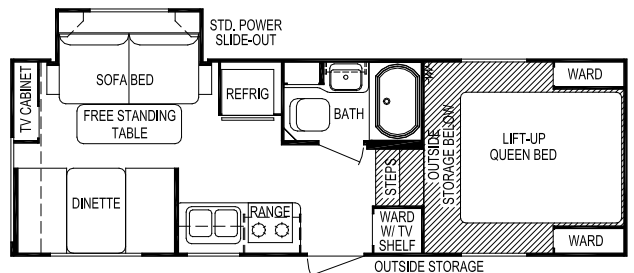
Model 195



Model 213



Model 212



Model 214



## Skyline Customer Satisfaction

Skyline Customer Satisfaction is more than just a promise. We believe you deserve quality in every aspect of ownership. To ensure your continued satisfaction, we're dedicated to providing you with a quality product along with the very best service available in our industry. Skyline's "Commitment of Excellence" will be a source of pride and satisfaction for you.

Contact your Skyline dealer for details.



## NO-NONSENSE WARRANTY

Manufacturing defects reported to Skyline within one year after original retail delivery of your new Travel Trailer or Fifth Wheel by an authorized dealer will be corrected without charge and within reasonable times. Excluded are misuse (including lack of reasonable maintenance), minor imperfections, alterations, and dealer or owner improper transportation, installation, or hookup.

This warranty gives you specific legal rights. You may have other rights which vary from state to state.

*Skyline's suppliers often provide additional warranties on their components beyond the Skyline factory bumper-to-bumper warranty. For example — the range, water heater, furnace and convertor carry two-year supplier warranties while the air conditioner, refrigerator, microwave and awning carry three-year warranties. The one-piece roof carries a 12-year warranty. Ask your dealer for full details.*

**Manufacturer's Notice:** All specifications, equipment, and prices are subject to change without prior notice. Production of all models subject to seasonal scheduling. Skyline Corporation reserves the right to improve a model without incorporating these changes in similar models produced at an earlier date.

Consult your automobile dealer and your recreational vehicle dealer to assure the proper match between tow vehicle and trailer. Tow vehicle and recreational unit must be properly equalized for efficient product performance and safety. Before you purchase your recreational vehicle, carefully consider the number of people it will accommodate and its end use. Manufacturer's load capacity restrictions and recommendations must be followed for safe and efficient product performance.

Your Retailer, an independent contractor, who is not an agent of Skyline Corporation, is the party responsible for your purchase contract and any additions, deletions, alterations, or attachments made to or in your recreational vehicle.



For the name of your nearest Skyline-built RV dealer, call:  
Hemet, CA 1-888-442-0997  
Mansfield, TX 1-800-962-7773  
Elkhart, IN 1-800-736-2573

Go RVing.

Or visit us at our Web Site at [www.skylinecorp.com](http://www.skylinecorp.com)