

Sandpiper

travel trailers • fifth wheels • park trailers



MADE IN THE U.S.A.

Travel Anywhere.





Sandpiper

323FK SHOWN WITH SATIN INTERIOR



323FK MASTER SUITE



SANDPIPER TRAVEL TRAILERS

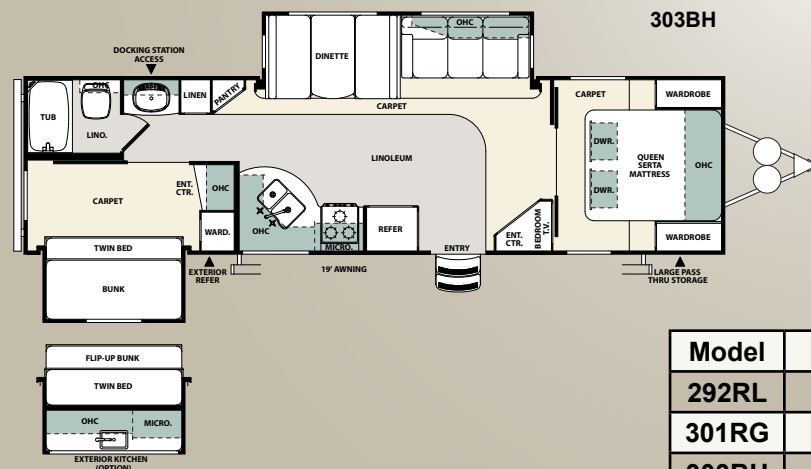
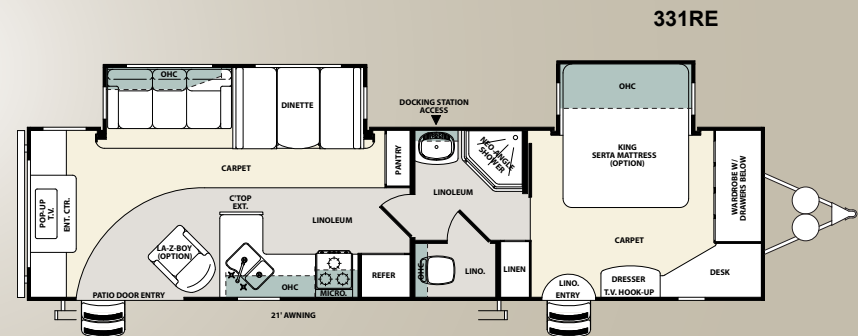
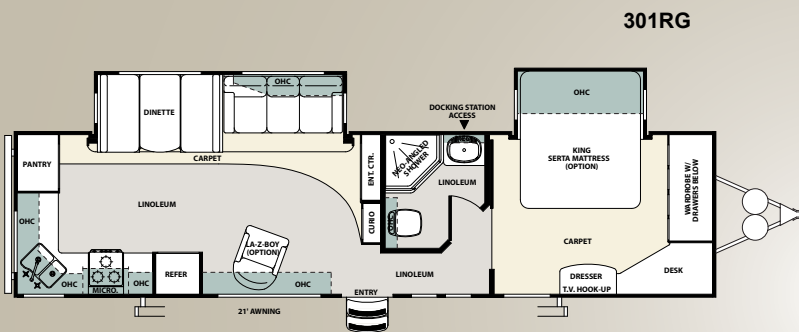
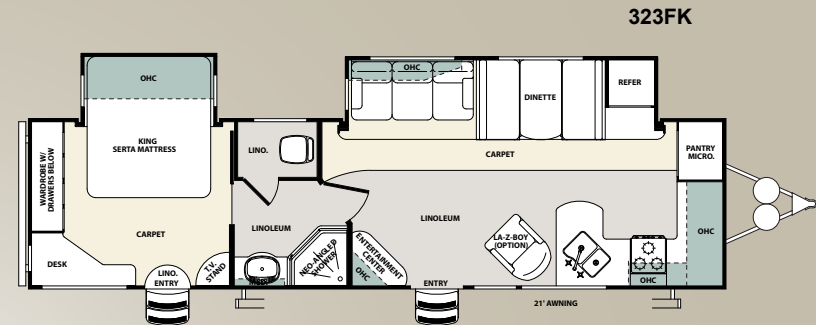
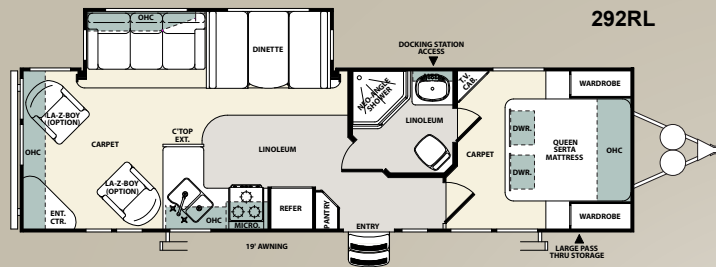
The Sandpiper travel trailer series are the most innovative travel trailers on the market. With numerous functional and livable floorplans to choose from you are sure to find one that suits your needs. Sandpiper travel trailers are packed with great features, and designed with contemporary styling. These travel trailers will provide you and your family many years of dependable service and great times.

EXTERIOR KITCHEN



OPTION AVAILABLE ON THE 303BH, 391QB, AND 355QBQ

SANDPIPER TRAVEL TRAILER FLOORPLANS AND SPECIFICATIONS



Model	Hitch	Ship	GVWR	Length	Height	Awning	Gray	Black	Fresh
292RL	736	7,125	11,136	32' 7"	11'6"	19'	108	54	52
301RG	1,139	8,955	11,299	37' 7"	11'6"	21'	108	54	54
303BH	938	8,194	11,338	34' 10"	11'6"	19'	88.5	32	54
323FK	817	8,660	11,217	35' 11"	11'6"	19'	108	54	54
331RE	1,341	9,531	11,501	38' 8"	11'9"	21'	108	54	54



Sandpiper

361FL SHOWN WITH SATIN INTERIOR



SANDPIPER PARK TRAILERS

They say that half the fun is getting there, but when you are staying in a Sandpiper park trailer the destination is where its at. Designed for lengthy destination stays the floorplans and amenities of the Sandpiper park trailer is as close to home as you can get. Great features like our optional exterior kitchen and comfortable interiors make sure that each trip is the best it can be.





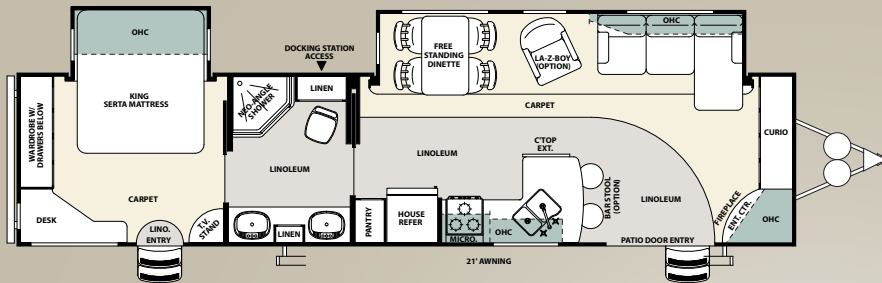
Sandpiper

361FL MASTER SUITE

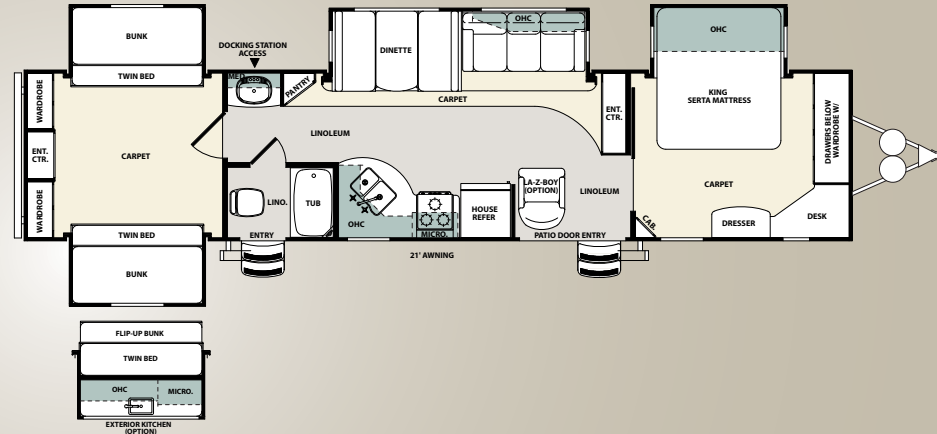
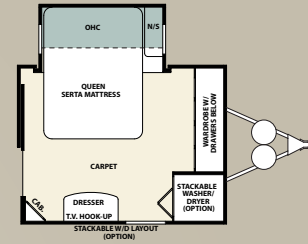


SANDPIPER PARK TRAILER FLOORPLANS AND SPECIFICATIONS

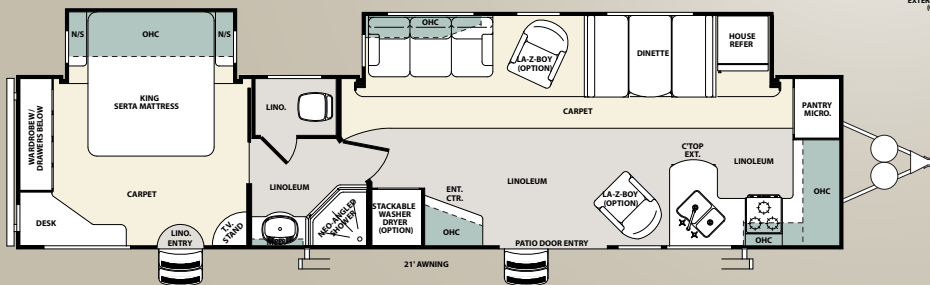
361FL



391QB



403FK



Model	Hitch	Ship	GVWR	Length	Height	Awning	Gray	Black	Fresh
361FL	1,273	9,816	13,273	37' 4"	11' 9"	21'	108	54	54
391QB	1,334	10,569	13,334	42' 0"	11' 9"	21'	54	54	54
403FK	1,506	9,736	13,506	41' 3"	11' 9"	21'	108	54	54



Sandpiper

356RL SHOWN WITH BRASS INTERIOR

FOREST RIVER
EXCLUSIVE

FOREST RIVER IS PROUD
TO FEATURE THESE QUALITY
BRANDS. YOU WILL NOT SEE
THESE PRODUCTS OFFERED BY
ANY OF OUR COMPETITORS.

LA BOY

Serta

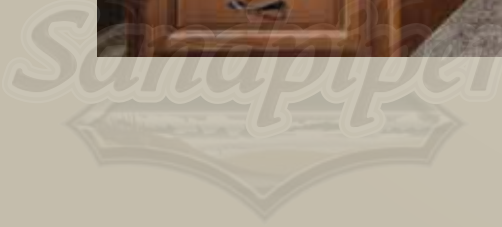


SANDPIPER FIFTH WHEELS

Sandpiper fifth wheels set the industry standard for features, comfort and quality. When you step inside of one of our fifth wheels you will sense our dedication to our loyal customers. Our commitment shows through and through from our professionally designed interiors to our handcrafted slideout fascia, with Sandpiper there is no compromise with quality or craftsmanship.



355QBQ SHOWN WITH TOFFEE INTERIOR





Sandpiper

355QBQ BUNK AREA (350 LB. BUNK RATING)



SANDPIPER TREE HOUSE



The "Tree House" loft is a great place for the kids to have fun.



The second bedroom has a ladder that gives the kids easy access to the loft area.



The "Tree House" floorplan is excellent for entertaining kids and adults alike.



"Toy box" floor storage feature.



The hatch feature is a fun way to reach the loft.



The master suite is large and has tons of storage.

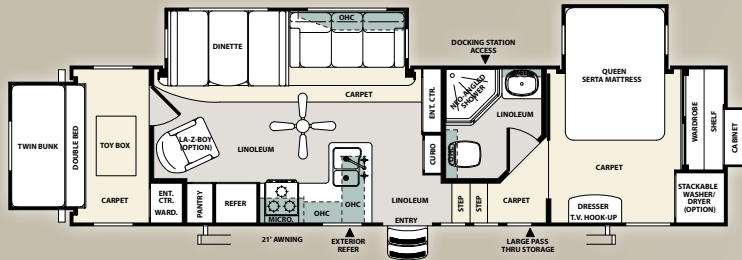


Fun "Tree House " features include the peepholes and mail slot.

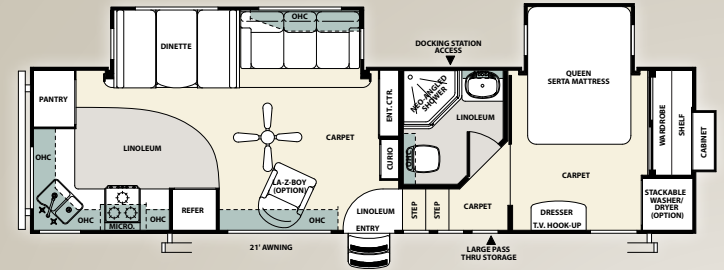
New for the 2010 Model year Sandpiper introduces the first truly kid friendly floorplan. The innovative 35LOFT or "Tree House", has a special area outfitted to entertain the kids. The second bedroom acts as an entertainment area with it's own half bath and the cleverly designed "toy box" in floor storage feature. From there a ladder transports the kids up to their own loft play/sleeping area. In the "Tree House" area you will find fun features for the kids such as peepholes, colored LED fun lights, and large skylights that make for excellent stargazing. The kids will be endlessly entertained in this great floorplan. While we were thinking about the kids we definitely did not forget about the adults. The 35LOFT floorplan comes equipped with a great entertainment center with LCD/HD TV, AM/FM Stereo ,CD, DVD Player. This combined with a kitchen that has abundant storage and all the amenities of home and you will see that the 35LOFT has everything in you need to enjoy your time on the road. The standard u-shaped dinette comes with a queen size air mattress and stow away tables and chairs for playing games or dining.

SANDPIPER FIFTH WHEEL FLOORPLANS AND SPECIFICATIONS

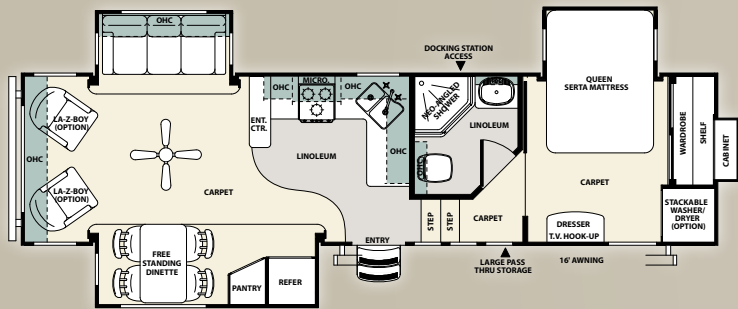
300BH



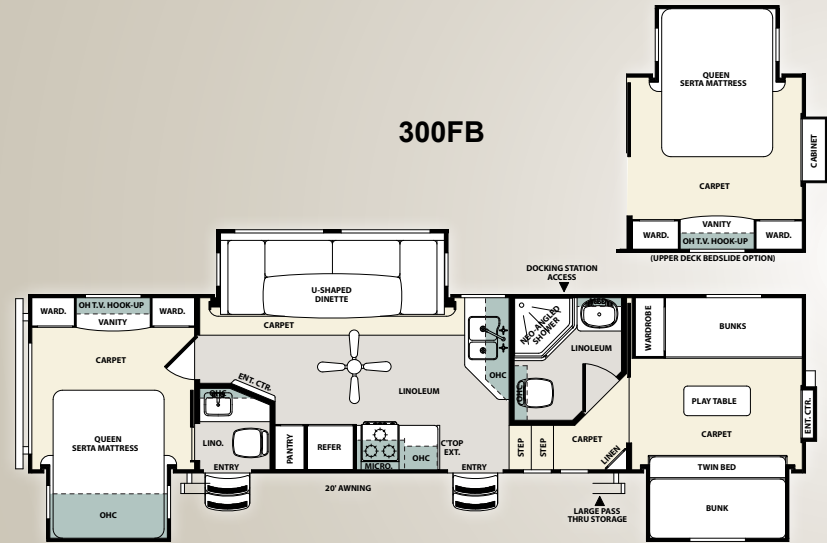
300RG



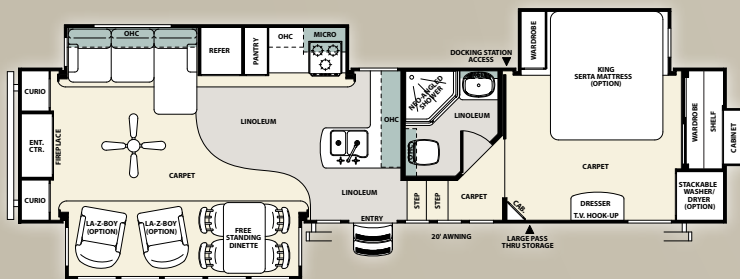
300RL



300FB



345RET

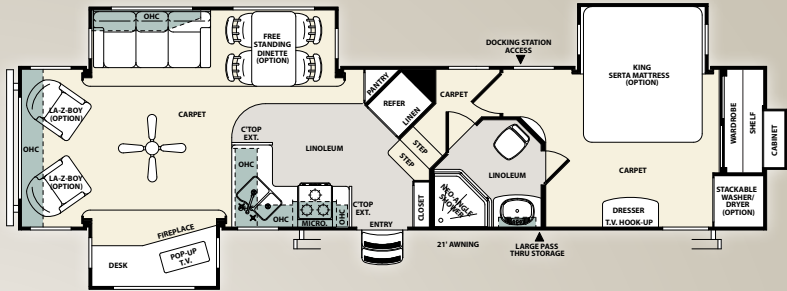


SPECIFICATIONS

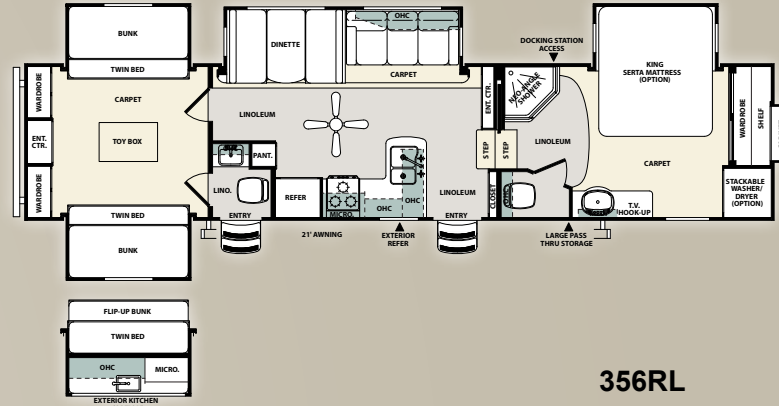
Model	Hitch	Ship	GVWR	Length	Height	Awning	Gray	Black	Fresh
300BH	2,389	10,366	14,389	33'11"	12'11"	21'	108	54	54
300RG	2,304	9,454	14,304	33'10"	12'11"	21'	108	54	54
300RL	2,564	10,381	13,994	33'8"	12'11"	21'	54	54	54
300FB	1,932	11026	13932	36'11"	12' 11"	20'	108	108	54
345RET	2,175	10,983	14,175	38' 11"	12'9.5"	18'	108	54	54

SANDPIPER FIFTH WHEEL FLOORPLANS AND SPECIFICATIONS CONTINUED

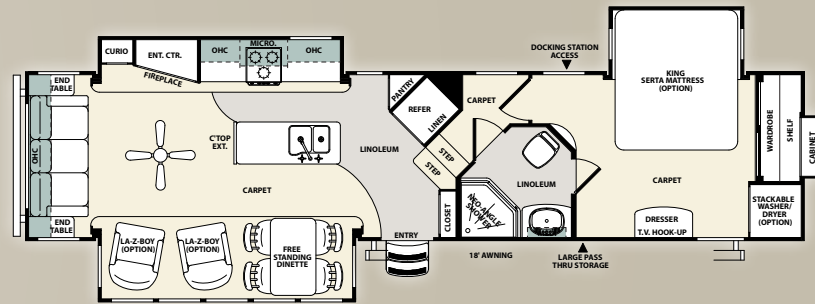
346RLG



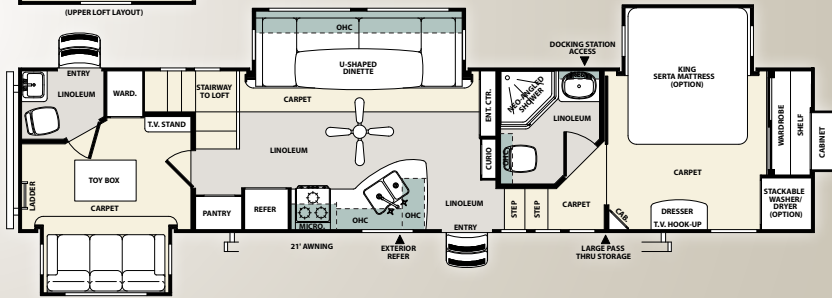
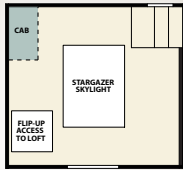
355QBQ



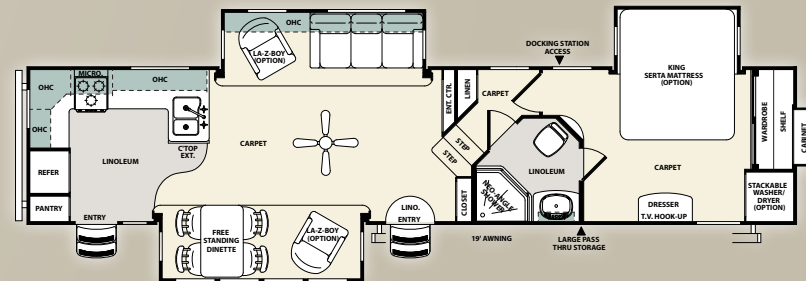
356RL



35LOFT



365RG



SPECIFICATIONS

Model	Hitch	Ship	GVWR	Length	Height	Awning	Gray	Black	Fresh
346RLG	2,017	10,665	14,017	39' 1"	12'9.5"	21'	108	54	54
355QBQ	1,923	11,185	13,923	39' 3"	13'0"	21'	108	108	54
35LOFT	2256	10,996	14,256	41' 0"	13'0"	21'	108	108	54
356RL	2,154	10,876	14,154	39' 4"	12'10"	18'	108	54	54
365RG	2,305	10,959	14,305	40' 9"	12' 9.5"	18'	108	54	54

SANDPIPER INTERIOR FEATURES



Optional stackable washer/dryer.
(available per floorplan)



The U-dinette sofa features a queen size air hide-a-bed sofa that inflates and deflates quickly and easily for easy set up and storage.



Serta™ Dreamscape mattress, a Forest River exclusive feature.



Handcrafted slideout fascia.



Contemporary ceiling fan with light kit.



Porcelain foot flush toilet, easy to use, easy to clean.



Residential style under mount sink with pull out sprayer faucet.



Amber threshold lighting at main entrance for added safety.



La-Z-Boy™ rocker recliners a Forest River exclusive.



Ball bearing, full extension drawer guides for trouble free service.

SANDPIPER EXTERIOR FEATURES



Gel coat fiberglass protects from UV rays and prevents yellowing and cracking.



Drip rail with extra long drip spouts that help prevent black streaking.



2 quick connect spray ports (one on each side) are great for easy clean up.



Sandpiper's "ICEBOX" is a quick and easy way to grab a cold snack and beverage without entering your unit.



110v outlet and cable outlet conveniently located in the pass thru storage area.



Flush mount exterior speakers for your listening pleasure.



Heated and enclosed underbelly-protects your coach and improved airflow allows for a sturdier ride.



Sandpiper's command center allows you to monitor tanks and other systems quickly and easily.



Wide stance power front jacks with quick release snap pins.



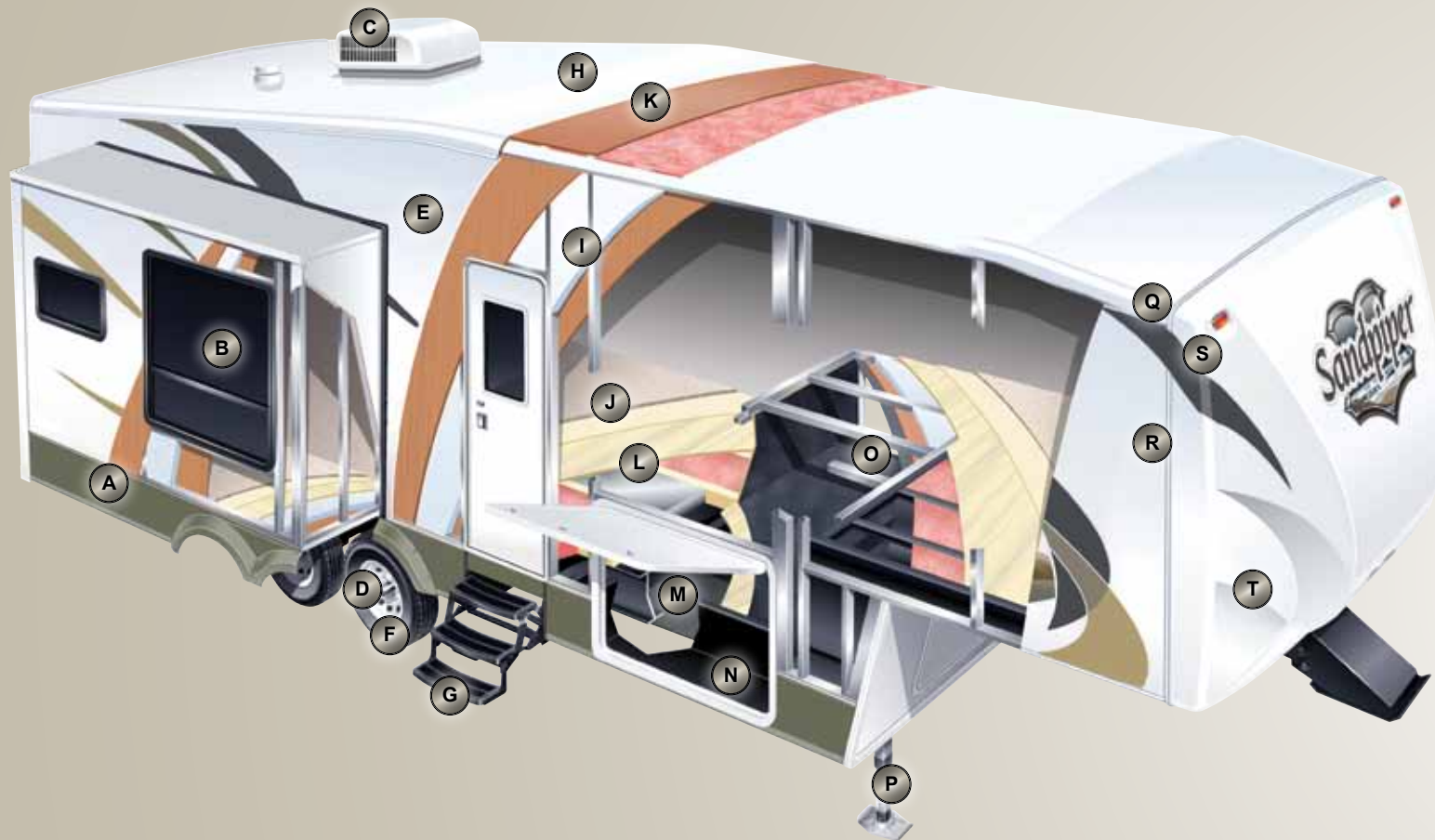
Contemporary aluminum rims with E-rated radial tires. (per floorplan)



Optional under mount exterior storage bin, keep commonly used items close at hand.



Lighted docking station is conveniently located in the large pass-thru storage area.



SANDPIPER CONSTRUCTION FEATURES

- | | |
|--|---|
| <p>A. ROLLED ALUMINUM SIDED SKIRTING</p> <p>B. TINTED WINDOWS</p> <p>C. DUCTED 15K BTU AIR CONDITIONING</p> <p>D. E-ZLUBE DEXTER AXLES</p> <p>E. LAMINATED VACUUM BONDED ALUMINUM SIDEWALLS</p> <p>F. RADIAL TIRES</p> <p>G. HICKORY SPRINGS™ RADIUS ENTRY STEPS</p> <p>H. SEAMLESS RUBBER ROOF (12 YR. WARRANTY)</p> <p>I. BLOCK FOAM INSULATION</p> <p>J. 28 oz. CARPET W/ PADDING</p> | <p>K. 3/8" ROOF DECKING (FULL WALK-ON ROOF)</p> <p>L. 5/8" TONGUE AND GROOVE FLOORING</p> <p>M. ENCLOSED UNDERBELLY W/ RADIANT HEAT</p> <p>N. 10" I-BEAM POWDER-COATED FRAME W/ RUST INHIBITOR</p> <p>O. ALUMINUM LAMINATED BATH DECK</p> <p>P. POWER FRONT JACKS WITH QUICK RELEASE SNAP PINS</p> <p>Q. MOTORIZED RADIUS ROOF</p> <p>R. HIGH GLOSS GEL-COAT FIBERGLASS EXTERIOR</p> <p>S. FRONT GEL-COAT FIBERGLASS CAP (STANDARD)</p> <p>T. IMPROVED FRONT CAP FOR SHARPER TURNING RADIUS</p> |
|--|---|