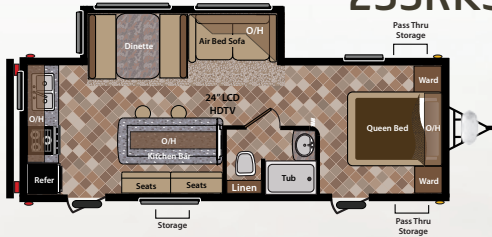


SPRINTER

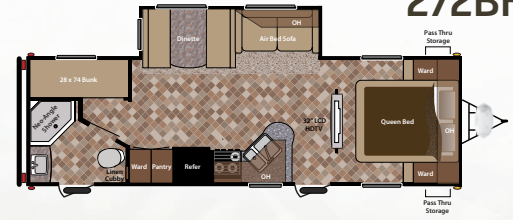
255RKS



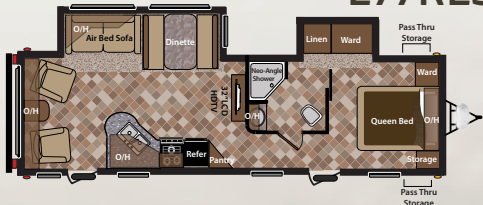
266RBS



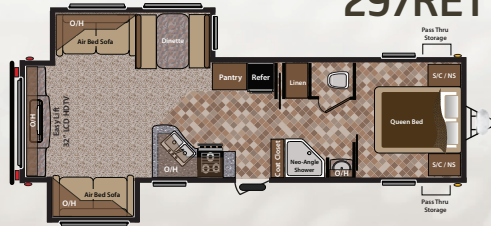
272BHS



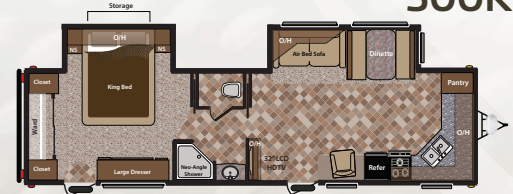
277RLS



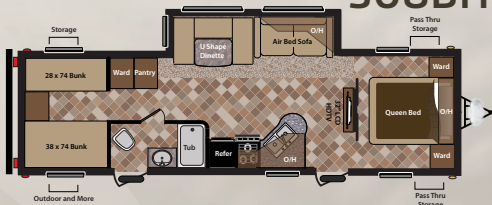
297RET



300KBS



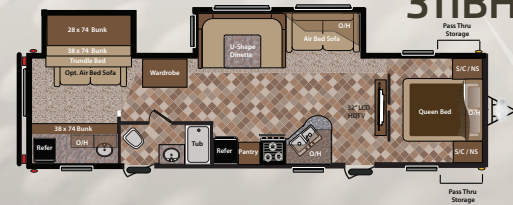
308BHS



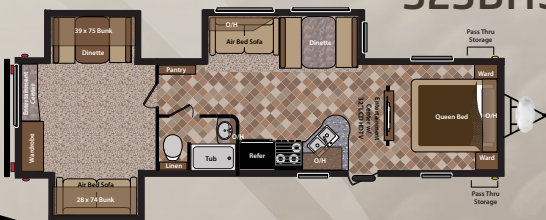
310KBS



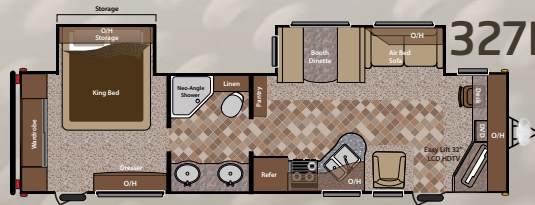
311BHS



323BHS



327FLS



NEW! 328RLS



TRAVEL TRAILERS

MODEL	255RKS	266RBS	272BHS	277RLS	297RET	300KBS	308BHS	310KBS	311BHS	323BHS	327FLS	328RLS
WEIGHT	6,179	6,410	6,515	7,235	7,913	7,886	7,297	8,126	8,075	8,735	8,110	TBD
CARRY. CAPACITY	2,621	3,075	2,950	2,290	3,077	3,074	2,233	2,884	2,920	2,320	3,090	TBD
HITCH	640	685	665	725	830	1,000	730	850	835	895	1,040	TBD
LENGTH	27' 10"	29' 5"	30' 7"	31' 11"	34' 11"	34' 5"	34' 4"	35' 3"	35' 4"	36' 9"	35' 10"	36' 8"
EXT. HGT. - AC TOP	11'	11'	11'	11'	11' 1"	11' 3"	11'	11' 3"	11' 3"	11' 3"	11' 3"	11' 3"
FRESH WTR	47	47	47	47	47	47	47	47	47	47	47	47
WASTE WTR	32	32	32	32	32	32	32	32	32	32	32	32
GREY WTR	64	64	64	64	64	64	64	64	64	64	64	64

Scan & See

View features, photos and more! Get your free app at: <http://gettag.mobi>



SPRINTER



EXTERIOR FEATURES

- One touch electric awning
- Lockable, radius baggage doors
- Rear bumper storage
- Gas bottle cover
- 9" easy opening triple entry step
- E-Z Lube™ axles
- Exterior grab handle for entry assistance
- Tough guard painted skirt metal
- Motion detector security light
- Rain gutters and spouts
- 2 30 LBS LP bottles with automatic change-over
- Roto-cast seamless holding tanks
- Keystone Original space maker 47 gallon fresh water system.
- 30' 30 Amp power cord
- Radial Tires
- Outside speakers
- Front diamond plate
- Light at the termination points

INTERIOR FEATURES

- 13,500 BTU ducted air conditioner with "Quick Cool"
- 55 amp electrical distribution panel
- 12 Volt, 55 amp converter
- 30,000 BTU auto-ignition furnace with thermostat
- Water heater bypass for easy winterization
- Residential cabinet hardware
- Large picture window at the dinette
- 12 volt slide room lights for dry camping
- Home Theater Surround Sound® system

- In floor ducted heat
- Central monitoring system for all tanks and battery
- Full extension ball bearing drawer guides
- Screwed cabinetry with lumbercore stiles

LIVING ROOM FEATURES

- Cable TV hook-up with antenna and signal booster
- Satellite prep with RG-6 cable
- High grade carpeting
- Residential fabric-covered valances with removable drapes
- Angled overhead storage in the slide room
- Home theater DVD / CD / AM / FM / MP3 hookup
- Air bed sofa
- HD LCD Television
- LED floor lighting

BATH FEATURES

- Large vanity sink
- Porcelain foot flush toilet
- Residential medicine cabinet with mirror
- ABS one piece tub surround
- Skylight over tub
- Reinforced tub support
- Power roof vent
- GFI recepts in the bathroom

KITCHEN FEATURES

- 6 gallon gas and electric DSI auto ignition water heater
- 3 burner high output gas range
- Deep 60/40 residential sink

- Full extension ball bearing metal drawer guides
- Metal high arched faucet
- Solid surface counter tops
- Under mount sink with solid surface covers
- Metal high arched faucet
- Lighted range hood with exhaust fan
- Microwave with carousel
- Oven
- Reversible dinette seat cushions
- Double door refrigerator
- Overhead cabinets above the sink
- Oversized pots and pan drawers

BEDROOM FEATURES

- Cable TV hook-up
- Under bed storage
- Color matched bedspread
- Bedroom reading lights
- Dream Mattress Collection
- King bed (Bedroom slide models)
- Electrical outlets near the bed
- Vents

POPULAR OPTIONS

- Spare tire
- Upgraded 15,000 BTU air conditioner
- Free standing dinette with four chairs
- Aluminum wheels
- 68" air bed sofa in place of the trundle (311BHS)

"CAMPING MADE EASY" PACKAGE

- Laminated aluminum framed sidewalls
- Enclosed and heated underbelly
- Exterior speakers
- E-Z Lube® axles
- Black tank flush
- Overhead slide room cabinets
- Skylight in the shower
- 6 gallon gas / electric DSI water heater with a 16.2 gallon recovery
- Microwave
- Oven
- Easy find light switches
- 13.5 ducted air conditioner
- DVD home theater system with Surround Sound®



YOUR LOCAL DEALER:



keystonerv.com - (574) 535-2100

2642 Hackberry Drive
PO Box 2000
Goshen, IN 46527-2000

Go RVing



RECREATION VEHICLE
INDUSTRY ASSOCIATION

Product information is as accurate as possible as of the date of publication of this brochure. Features, floor plans, and specifications are subject to change without notice. Please also consult Keystone's web site at www.keystonerv.com for more current product information and specifications. Tow Vehicle Disclaimer. CAUTION: Owners of Keystone recreational vehicles are solely responsible for the selection and proper use of tow vehicles. All customers should consult with a motor vehicle manufacturer or their dealer concerning the purchase and use of suitable tow vehicles for Keystone products. Keystone disclaims any liability or damages suffered as a result of the selection, operation, use or misuse of a tow vehicle. KEYSTONE'S LIMITED WARRANTY DOES NOT COVER DAMAGE TO THE RECREATIONAL VEHICLE OR THE TOW VEHICLE AS A RESULT OF THE SELECTION, OPERATION, USE OR MISUSE OF THE TOW VEHICLE. 9/2011