

XLR THUNDERBOLT

Extreme Luxury Living



Optional partial paint shown.

386X12 spacious living area shown below with optional theater seating and free standing dinette.

2012 XLR THUNDERBOLT FEATURES

INTERIOR STANDARDS

- Professionally Designed Interiors
- Maple Raised Panel Cabinetry
- Premium Textured Countertops
- Crown Molding
- Night Shades
- Single Lever High Arcing Faucet
- Ceiling Fan (Select models)
- Attic Ventilation System
- Brownstone Laminated Countertops
- Residential Large Microwave
- Stainless Steel Deep Bowl Kitchen Sink
- 7'6" Slide Room Height (Select models)
- Living Room LCD HDTV
- Multi-Zone Entertainment Control Module
- Indoor/Outdoor Speaker Selector Switch
- 15K BTU Air Conditioner
- 150 Gallons Fresh Water (Select models)
- Wired & Framed for 2nd A/C (Bedroom)
- Bathroom Fantastic Fan
- LED Shower Light
- 12 Gallon Gas/Electric/DSI Water Heater
- Washer/Dryer Prep In Cargo Area (N/A on 10' Garage Models)
- Retractable Hid-N-Screen Wall
- Temperature Controlled Garage (Select models)
- Dovetail Storage Box (Select models)

EXTERIOR STANDARDS

- Vacuum-Bonded Alum. Framed Construction
- POLYDET® High Gloss Fiberglass Sidelwalls
- Gel Coat Radius Front Cap w/LED Lights
- Exterior LED Brake Lights and Marker Lights
- 6,000 lb EZ Lube Axles
- 16" Spider Aluminum Wheels
- Tri-Tone Metal Skirting
- 50 AMP Service
- 100 AMP Converter
- Exclusive Hitch Pin Cover
- Generator Ready w/Fuel Tank - 18 Gal.
- Ultra View Frameless Windows
- Electric Awning
- Strut Assisted Entry Doors
- Slam Latch Baggage Doors
- Premium Ramp Door Compression Locks
- Reverse Activated Rear Flood Lights
- Self-Adjusting SchwinTek Slide System (Select Slides)
- Black Laminated Slide-Out End Walls
- Satellite HD Ready Prewire
- Outside Shower
- Enclosed Termination Valves
- Triple 30# LP Tanks (Select models)



OPTIONAL EQUIPMENT

- **AMP It Up Package** (Corian kitchen & bath, undermount deep bowl stainless steel sink, Corian sink covers, residential high rise faucet w/pull down sprayer, laser cut Thunderbolt Backsplash)
- **Arctic Weather Package** (R40-E roof, floors, gooseneck and cap, R24-E slide floor, dual pane windows, 12V heated holding tanks)
- **Man Cave Garage Package** (Rock Star entertainment center w/32" LCD TV, dual 10" subwoofers, 4 speakers, 2 sport rockers, Kegerator, ground effects exterior lighting)
- 5.5kw Onan CARB EVAP Generator
- Mobile Fuel Station w/Fuel Tank (30 gal.)
- Electric Rear Stabilizer Jacks
- Frame Mounted Toy Lok
- Party Dinette IPO Booth/Sofa
- Free Standing Table & Chairs
- Theater Seating IPO Sofa
- Sliding Glass Patio Door (37X12SA Only)
- 2nd Air Conditioner - Bedroom
- Dirt Devil Central Vac
- Bedroom TV w/ Exterior Bracket
- 5 Function Wireless Remote System
- Wireless Back Up/Security Camera
- Kegerator
- Removable Cargo Carpet Kit
- VIP Party Deck (N/A 10' Garage Models)
- Electric Bed w/Bottom Pass Thru Dinette
- Cargo Bath Upgrade (40X12 Only)

KAHULA

ABSOLUTE CARBON

BOURBON

IRISH WHISKEY

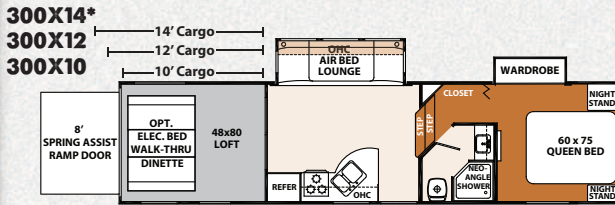


XLR THUNDERBOLT FIFTH WHEEL SPECIFICATIONS

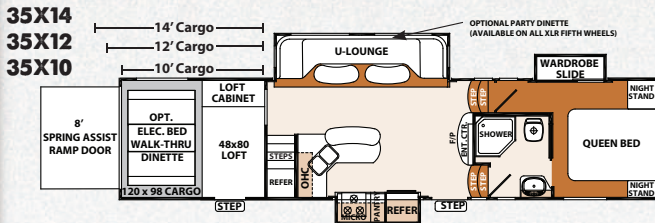


Slideout side walls are black to complement the dramatic exterior graphics.

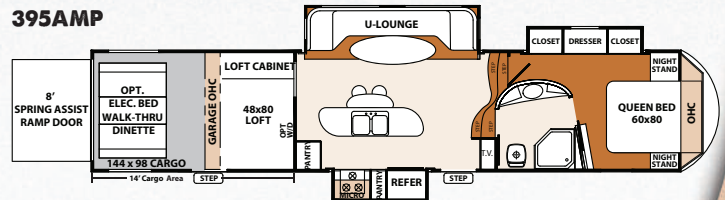
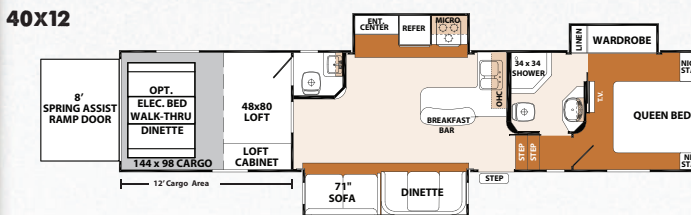
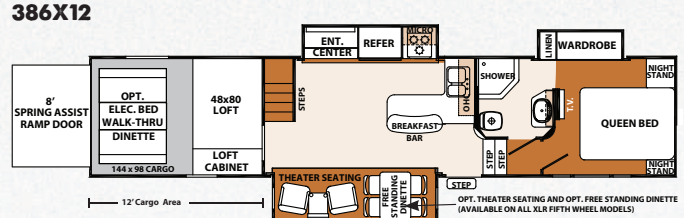
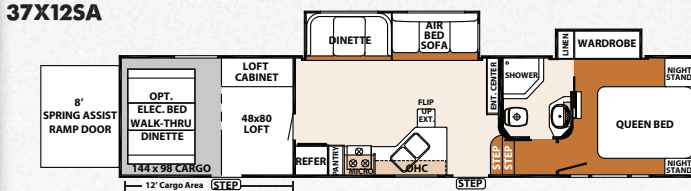
Model	Hitch Weight	Ship Weight	GVWR	Cargo Capacity	Exterior Length	Exterior Height	Exterior Width	Fresh Water	Gray Water	Black Water	Awning Size
300X10	1504	10789	13540	2751	36'0"	13'2"	102"	100	64	32	18'
300X12	1672	11194	13672	2478	38'0"	13'2"	102"	100	64	32	18'
300X14	1838	11725	19838	8113	41'0"	13'2"	102"	100	64	32	18'
35X10	2389	12744	18000	5256	38'1"	13'2"	102"	100	86	32	14'
35X12	2300	13402	18000	4598	39'11"	13'2"	102"	100	86	32	14'
35X14	2977	13648	18000	4352	41'11"	13'2"	102"	100	86	32	14'
37X12SA	2995	13440	18000	4560	39'6"	13'2"	102"	100	86	54	21'
386X12	1699	13512	18000	4488	43'4"	13'2"	102"	100	54	54	14'
40X12	2522	14554	18000	3446	41'8"	13'2"	102"	100	54	108	14'
395AMP	2853	14713	18000	3228	42'9"	13'2"	102"	162	118	42	21'



*300X14 includes loft



Thunderbolt models feature a contemporary front bedroom with large wardrobe slide out and designer accent wall.



YOUR XLR THUNDERBOLT DEALER

THUNDERBOLT



Learn More
Scan this barcode using a QR Reader on your smart phone to learn more about Forest River.



A Berkshire Hathaway company.

CHECK US OUT ON:

FOREST RIVER
2431 E. Kercher Road ■ Goshen, IN 46526
E-mail: XLRinfo@forestriverinc.com
Phone: 574-975-0279 ■ Fax: 574-343-5909
www.forestriverinc.com/XLR
www.forestriveraccessories.com

Actual towing capacity is dependent on your particular loading and towing circumstances, which includes GVWR, GAWR and GCWR, as well as adequate trailer brakes. Please refer to the Owners Manual of your vehicle for further information. Floor plans, features and specifications are subject to change without notice. 8/11/10K ©2011 XLR

XLR
Extreme Luxury Living